

WEATHER			
	Min.	Max.	Precip.
Tuesday, April 25	30	68	0.00
Wednesday, April 26	34	67	0.00
Thursday, April 27	36	68	0.00
Friday, April 28	43	68	0.00
Saturday, April 29	46	70	0.00
Sunday, May 1	53	69	0.00
Monday, May 2	54	74	0.01

# The Chelsea Standard

**QUOTE**  
 "We are all travelers in the desert of life and the best we can find in our journey is an honest friend."  
 —Robert Louis Stevenson.

ONE HUNDRED-SECOND YEAR—No. 46

14 Pages This Week

CHELSEA, MICHIGAN, THURSDAY, MAY 4, 1972

15c per copy

SUBSCRIPTION: \$4.00 PER YEAR

## Baseball Team Roars on Past Stockbridge

In the face of Wednesday's battle with second-place Milan, the Chelsea baseballers coasted on the way to a 8-6 non-league victory over Stockbridge, Tuesday, May 2.

The Bulldogs led all the way, collecting three runs in the first and in the second before emptying the bench to give the starting nine a chance to rest. Todd Sprague went two for two at the plate as did Randy Brier who also stole four bases. Jeff Daniels was only one or three for the afternoon, but he hit was a long one, socking the ball out of the park for a two-run home run in the second. Wayne Welton also doubled for the Bulldogs.

Dave Lukasiak started the game for Chelsea and received the win, giving up only five hits before retiring in the sixth. This was only the second pitching assignment for Lukasiak who was told by Coach Genske to take himself out of the game whenever he began to feel tired. He was touched for a couple of runs before Tim VanSlambrook came in to relieve him. VanSlambrook gave up only four hits and the two combined for nine strikeouts.

## Baseball Team Wins 18-5 over Mich. Center

Cool night breezes seem to agree with Bulldog batsmen as they pounded out 12 hits on their way to an 18-5 rout of Michigan Center last Wednesday night.

It was a hitter's night for Chelsea, lead by Tim VanSlambrook who drove in seven runs with his near-perfect four for five performance at the plate. Leftfielder Joe Aspiranti was two for two, collecting two RBI's while second baseman Todd Sprague had two hits in four at-bats.

Dave Lukasiak began the game for the Bulldogs but was lifted in the second when he began to lose (Continued on page two)



**TITLE HOPES STILL ALIVE:** The 1971 league champion Chelsea High track team is again making a run this season for at least a co-championship in the SEC. They currently boast a 4-1 conference record with the lone loss coming from league-leading Saline. The Bulldogs will bet another chance at Saline in the final conference meet May 18. Pictured from left to right, front row: Ishmael Picklesimer, Howard Schenk, Dave Proctor, Dale Poertner, Jeff Marshall, Craig Coltre; second row: Rick Sweeney, Karl Gauss, Jeff Van Riper, Jim McGinn, Keith Kargel, Tom Heppburn, Ken Buxton; third row: Dan Pierson, Tim Lancaster, Roger Fitch, Dan Hoover, Dan Bertke, Lee Ferguson, Steve Worden; Assistant Coach Bill Bainton, Randy Seitz, Tom McKernan, Marty Cashdollar, Dave Buxton, Randy Young, Bill Tite, Bill Harrison, Head Coach Bert Kruse.

## Track Team Dumps Novi, Dundee

### Wallop Novi, 85-38, Last Wednesday

Chelsea High school trackmen continued on their winning way by easily defeating Novi, 85-38, in a dual meet Wednesday, April 26. The Bulldogs have only two more league meets before ending the season with a full schedule of district, regional and state meets.

The Novi team simply could not compete against the depth, especially in the sprints, that Chelsea has exhibited all season. The Bulldogs ran one-two-three in four events which accounted for the lopsided victory.

Chelsea jumped off to an early lead by dominating the field events with three firsts in the shot put, high jump, and pole vault. Randy Seitz put the shot 49'9 1/2" while Roger Fitch jumped 6'1 1/2" and Tim Lancaster vaulted 11'6" for their first-place finishes. Ishmael Picklesimer took second in the shot with a 39'8" heave while Craig Coltre finished second in the long jump with 18'11 1/2". Coltre had three second-place finishes for the day, placing in the 120-yard high hurdles and the 180-yard lows in times of 1:17.7 and 2:20.0, respectively. Dan Hoover had two seconds for the day with a vault of 10'6" in the field event and later ran a time of 58.2 in the 440-yard run.

### Victimize Dundee to Tune of 76-47

Chelsea trackmen swept three events on their way to an easy 76-47 victory over Dundee, Tuesday, May 2. The depth of the Bulldog squad was never more evident than in this meet where they claimed all three-point places in the shot put, pole vault, and mile run.

Randy Seitz started the day off on the right track with a winning toss of 47'11 1/2" in the shot put, followed by teammates Ishmael Picklesimer and Marty Cashdollar. Tim Lancaster led the way for the other sweep in the field events with a vault of 11' in the pole vault. Dan Pierson and Dan Hoover captured second and third with 10'6" efforts.

To round out Chelsea's points in the field, Craig Coltre took a first in the long jump with 18'11 1/2" and Bill Tite and Roger Fitch took second and third with identical jumps of 5'10" in the high jump.

Craig Coltre added points to the winning margin with two second-place finishes in the hurdle events with times of 1:18 flat for the 120-yd. highs and 2:27 for the 180-yd. lows. Tim Lancaster placed third in the low hurdle event.

## School Millage Election Slated Next Monday

Chelsea area residents will go to the polls Monday, May 8 to vote in the special millage election requested by the Board of Education. Voting booths will be open at the Dwight E. Beach school, 145 Mayer Dr., from 7 a.m. to 3 p.m. Three issues will be presented to the voters: (1) the renewal of the 10.98 mills for operation for two years; (2) one mill for capital outlay for two years; and (3) one mill for three years for a building and site fund.

Any person may vote who is a registered voter and resides in the Chelsea School District. If he is eligible to vote in a national, state, county or local election, he is eligible to vote on all issues in this school district millage election.

## Questions-Answers on School Millage Requests

PROPOSITION I 10.98 Mills Renewal				
Q. Is the request for 10.98 mills a renewal?				
A. Yes. The electors approved the 10.98 mills two years ago, Jan. 26, 1970. This millage expired with the December 1971 tax collections. The request is to renew this millage for two years.				
Q. Did the board levy all the millage authorized in 1971-72?				
A. No. The board was authorized by the vote of the electors to levy 10.98 mills. However, the board levied 9.98 mills.				
Q. Does the 10.98 proposition (Proposition I) mean an increase in taxes?				
A. No. The total millage for operating funds and the debt retirement funds is the same as last year. The increase of one mill for operation is offset by a decrease of one mill in the debt retirement funds.				
Q. How do the millages of the last few years compare with the proposed 1972-73 millage?				
A.				
Operation	1969-70	1970-71	1971-72	1972-73
1956 Debt Ret. Fund	22.2	22.2	21.2	22.2
1965 Debt Ret. Fund	2.5	2.5	1.75	1.25
	3.0	2.25	2.25	1.75
Total	27.7	27.7	25.20	25.20

erty in said school district for a period of two years, 1972 and 1973, for the purpose of providing additional funds for operating expenses (this being a renewal of 10.98 mills for operating purposes which expired with the 1971 tax levy)?

Q. Will the enrollment increase next year?

A. Yes. The enrollment will increase by 100 students as a result of the closing of St. Mary school in June. An additional 30 students is anticipated making an estimated increase of 130 students.

Q. How do the valuations of the last few years compare with the estimated 1972-73 valuation?

A. 1969-70 \$48,730,940  
 1970-71 \$52,721,687  
 1971-72 \$56,528,117  
 Estimated 1972-73 \$68,804,660

Q. How does the increase in State equalized valuation affect State Aid (money received from the State)?

A. When the State Equalized Valuation of the district increases the State Aid decreases. The Governor's proposal for State Aid for 1972-73 provides a gross allowance of \$732.50 per student less 20 mills deductible on the amount of state equalized valuation behind each student. Only 98 percent of State Aid would be received by the district because the State will retain 2 percent for a contingency fund. The 2 percent would be retained because State income might not equal State expenditures.

This proposal would result in a loss of approximately \$33,000 in State Aid for the district next year.

Q. Where and until what date may I secure an absentee ballot?

A. Absentee ballots may be secured at the administration building at the high school. The last date for securing and returning an absentee ballot is 2 p.m., May 6.

Q. Who may vote?

A. Any person may vote who is a registered voter and resides in the Chelsea School District. If he is eligible to vote in a national, state, county or local election, he is eligible to vote on all issues in the school district millage election. (Continued on page six)



**FORENSICS WINNERS:** Coach William Coelius seems very pleased with his two winners in the regional Spring Forensic competition held Saturday, April 29 at Eastern Michigan University. Marvin Guster (middle), a sophomore, placed third in

## Two CHS Students Advance To District Forensics Meet

There certainly must be some persuasive rhetoric flowing through the hallowed halls of Chelsea High school this week as Dan Gaunt and Marvin Guster return fresh from surprising finishes in the regional Spring Forensic competition held Saturday, April 29 at Eastern Michigan University.

Gaunt, a senior, placed second in the men's extemporaneous division while Guster, only a sophomore, placed third in the declamation category. They earned the right to represent the southeast Michigan region with victories in the district competition held April 15 at Greenhills school, Ann Arbor. Competition included the best speakers from more than 31 schools in the region.

Gaunt's specialty, extemporaneous speaking, is especially difficult as he must be informed on literally every subject that has recently appeared in the news. He spends hours reading and researching topics before he considers himself prepared for possible questions in competition. In actual competition, he draws several topics and is then given a half hour during which to formulate his response. He is given a very strict time limit of four to six minutes in which he must deliver his reply to each topic.

In last Saturday's competition, Dan drew topics concerning the

## Walter Brown Named Natl. JC Director

Walter Brown of the Chelsea Jaycees was elected National Director for Region J of the Michigan Jaycees Monday night, May 1. The election was held at the National Polish Alliance hall in Jackson and was hosted by the Jackson Jaycees.

A field of four candidates ran for the office which provoked a lively, oftentimes heated, electoral process. At 1 a.m., after six ballots, Brown was elected.

As National Director for Region J, he will serve as administrator for 24 Jaycee chapters in districts 27, 28, and 29. He will attend at least four executive board meetings, three state board meetings, and one state convention during his one-year term of office.

Brown is a past president of the Chelsea Jaycees and past state chairman of Records and Recognition.

Another highlight of the evening came when the Chelsea Jaycees awarded a "senatorship" to Bob Updegraff, a Chelsea Jaycee. This honor is the highest award a Jaycee can receive. In their 16-year history the Chelsea Jaycees have awarded only two other Jaycee International "senatorships," the first to Ron Branham and the other to Art Steinaway.

The John Walz family, who have resided at 141 West Middle St., left Friday for Livermore, Calif., where they will make their home.

## South School Kindergarten Round-up Set

Kindergarten Round-up will be held at the South school on Thursday, May 18.

Rural parents are asked to come from 8:30 a.m. to approximately 10 a.m., and town parents from 1:30 p.m. to approximately 3 p.m.

Since these future kindergarten children have been allowed to visit school this spring, we have planned no activities for them at this meeting. Please do not bring the children.

To be eligible for kindergarten in September children must be five years old on or before Dec. 1. Parents should bring birth certificates to the round-up.

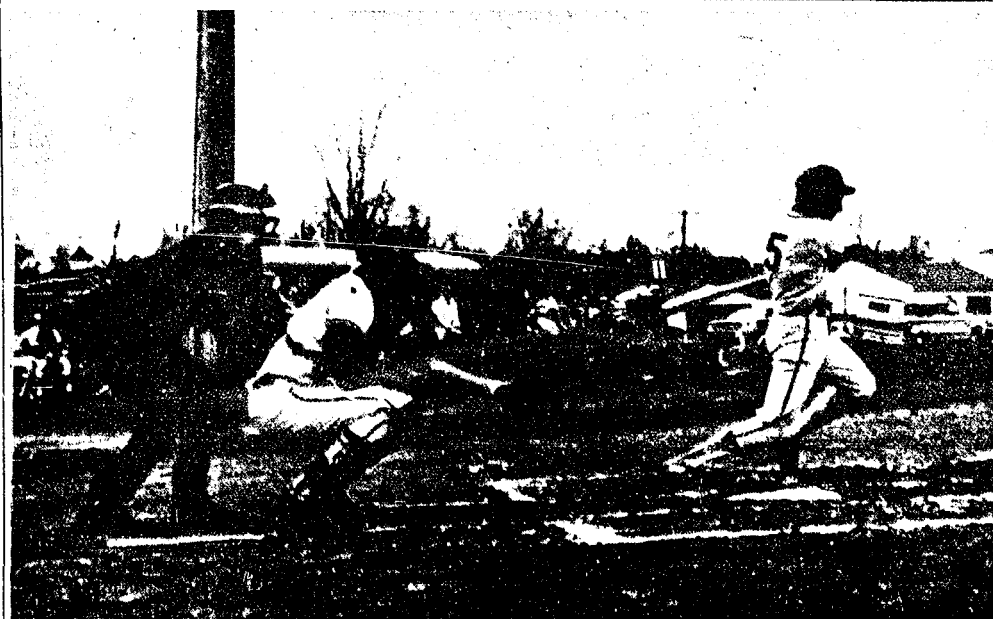
This enrollment date and place is for all pre-kindergarten children in the Chelsea School District. Further details will follow later.

## Symphony Band Earns II Rating at State

Chelsea High school symphony band came home with a division II rating from the State Band Festival held Saturday, April 29 at Flint Northwestern High school. The division II rating was given by the three concert judges and a division I rating was earned in sight reading.

The band qualified for this state competition by earning straight I's in the District Festival held in Monroe, March 11.

Band-O-Rama, a presentation of all the high school bands, will be held Thursday, May 11, at 8 p.m. in the auditorium. The evening will include performances by the concert band, the symphony band, and the stage band, as well as a special guest appearance by a group that can only be classified (Continued on page two)



**IT'S A HIT!** Todd Sprague collects his first of two hits for the afternoon, driving in Randy Brier, as the Chelsea Bulldogs are off and running towards an 8-6 non-league victory over Stockbridge Tuesday, May 2. The game offered the opportunity for several substitutes to play as the regulars rested after the fourth inning in anticipation of Wednesday's showdown encounter with second-place Milan.



## ★ IN OUR OPINION ★

Remember To Vote Monday  
In School Millage Election

Monday, May 8 is a very important day to all who are concerned with the activities of the Chelsea School District. May 8 is millage election day, the day that the voters of the Chelsea School District signify their support or their schools.

While there are several property tax relief proposals pending, there is still only one way to adequately finance a school system's operation. That is by a self-imposed tax on our property for that purpose.

Your Board of Education asks that you carefully consider the several proposals (details may be found elsewhere in this paper) and vote in the election.

The sole purpose of our Board of Education is to operate our school system for the benefit of the children of the Chelsea School District. There can be no doubt that well-educated young people are an asset to our community and country and good educational facilities are expensive. This is one tax we can't afford not to pay.

School  
Board  
Briefs

At a regular meeting of the Board of Education Monday, May 1, all members were present in addition to Superintendent Cameron, Assistant Principal Lapinowski, and several guests.

George Bergman, advisor of the student council, and several members of the council were present at the meeting.

Purpose of the meeting was to improve communication at the school-board level. David Lukasiak, president of the council, reported briefly on its structure and goals. At that time there was free discussion among the people present. It is hoped that this is only the beginning of meaningful dialogue that will enable all people to understand and be understood.

A special board meeting will be held Monday, May 8, 8 p.m. at Beach Junior High.

The meeting adjourned at 11 p.m.

Don't make vents in the top crust of pies which are to be frozen unbaked. Fillings are retained better during freezing when pie fillings are completely sealed in an air-tight crust.

Established 1871 **The Chelsea Standard** Telephone GR 5-8581  
Excellence Award By Michigan Press Association  
1951-1952-1953-1954-1955-1956  
Walter P. Leonard, Editor and Publisher

Published every Thursday morning at 300 North Main Street, Chelsea, Mich. 48118, and second class postage paid at Chelsea, Mich., under the Act of March 3, 1879.

Subscription Rates (Payable in Advance)  
In Michigan: One Year \$4.00 Six Months \$2.25 Single Copies \$1.15  
Outside Michigan: One Year \$6.00 Six Months \$3.50 Single Copies \$2.20  
Service men or women, anywhere, 1 year \$4.00

MEMBER **NATIONAL NEWSPAPER** Association - Founded 1885  
National Advertising Representative: MICHIGAN NEWSPAPERS, INC. 257 Michigan Ave. East Lansing, Mich. 48823

HOUSEHOLD & ANTIQUE  
AUCTION  
SATURDAY, MAY 13

Beginning at 1 p.m.

Located north of I-94 on Clear Lake Rd. 1/4 mile (Exit No. 153) first house on right.

Leonard refrigerator with freezer on top.  
Drop-leaf oak table.  
Dining room table with self-storing leaves.  
Red 3-pc. sectional sofa and rocker.  
Small oak roll top desk.  
2 3-pc. modern bedroom suites.  
30" antique commode with glass pulls.  
Glass front china cabinet.  
Oak buffet.  
Oak rocking chair.  
Bamboo furniture.  
Treadle sewing machine.  
Cane bottom chairs.  
Oak library table.  
Child's wicker rocker.  
Seth Thomas 30-hr. spring clock.  
12x15 rug.  
Studio bed.  
Antique clothes closet.  
Fruit safe.  
Lamps.  
End tables.  
Wood range.  
2 record cabinets.  
Lantern.  
Old pictures and frames.

1858 and other dated fruit jars.  
Wood butter bowl. Butter mold.  
Chamber pot. Copper boiler.  
Wood potato masher.  
Crocks. Jugs. Cider barrels.  
vults. Bedspreads.  
Skill saw.  
Craftsman pipe threading dies.  
Yardman rotary lawn mower, in good condition.  
Bolens garden tractor and cultivator.  
Log chains.  
Antique wheelbarrow.  
Hand corn sheller.  
Slip scraper.  
Walking plow.  
Single horse cultivator.  
Platform scales.  
Single bottom 18" plow.  
Snow fence.  
Stock fence.  
Fence stretcher.  
Many other items not mentioned.

## TOOLS

TERMS: CASH Not Responsible for Accidents  
**John R. Hartman Estate**  
DALE HASELSCHWERDT, AUCTIONEER  
Phone (517) 536-4286



## ★ MICHIGAN MIRROR ★

By Elmer E. White, Secretary, Michigan Press Association

**Billboards Fought**  
Opponents of billboards haven't given up, now that the legislature passed a billboard control bill which they feel is much too lenient.

State Rep. Ray Smit, R-Ann Arbor, perhaps the strongest opponent for the measure which passed, is already at work on legislation which would tighten the law.

The outspoken lawmaker contends the new law is "a fraud" and "was written by the billboard industry."

Now that members of the legislature have had a chance to look at what they did, "they are beginning to regret their action," he says. "Several members have expressed to me their desire to see

that legislation amended and brought into more realistic shape."

One section he objects to most strenuously prohibits townships under 50,000 population from eliminating billboards within their own communities.

He also wants "more reasonable" size limitations, tougher restrictions on how close billboards can be to the roadside, and the erection of official signs which would eliminate private signs found near exits telling what is at the exit. The official sign would list everything at once instead of permitting a long line of billboards.

The new law was passed just in time to prevent the state from losing more than \$19 million in federal highway money.

Thomson Brothers  
Bolster Kalamazoo  
Tennis Prospects

This year as the Kalamazoo College tennis team seeks its 33rd championship out of the last 34 years in the MIAA, it will again be led by two former Chelsea residents, Tom and Steve Thomson. The brothers, who were both conference flight champions last year, are graduates of Chelsea High school.

Tom, a junior, was flight No. 2 champion in the conference last year and this year will be playing in No. 4 singles and No. 2 doubles. Steve, a sophomore, was flight No. 6 champion last year and will be competing in No. 7 singles and No. 4 doubles this year.

Obviously Kalamazoo College has dominated its own league for years but last year they also finished fifth in the NCAA College Division competition. This year Kalamazoo will host the event June 5-10. They will also compete against the University of Michigan in Ann Arbor, Monday, May 8 at 2 p.m.

Tom and Steve may be the start of a Thomson tennis dynasty at the college as their younger twin brothers Mike and Mark will be attending Kalamazoo beginning next year, undoubtedly with tennis racquets tucked among their luggage.

## Band-O-Rama ...

(Continued from page one)  
as "way-out." Special soloists will highlight the program along with offerings from smaller groups within the various bands.

There is no charge for the program, however, a free will donation will be accepted at the door.

## Baseball Win ...

(Continued from page one)  
control, walking several batters. VanSlambrouk came on in relief but was relieved in the fourth by Wayne Welton who pitched one-hit ball to collect the win.

In December, 1968, Central Michigan University's Chippewas set a national basketball record which still stands by grabbing 111 rebounds in an 80-61 win over Alma. The Chippies missed 80 shots and Alma failed to score 66 times from the field.

**GOING OUT OF  
BUSINESS SALE**  
50% Off, You Dig  
25% Off, We Dig  
**MASON'S NURSERY**  
SALINE  
1/4 mile S. of Cemetery 429-5034  
8794 Monroe St., Mason Rd.

**Business Sought**  
One of the ways state officials are trying to keep Michigan's economy sound is by enticing industry into Michigan.

Already in recent months, they have gone into Illinois and Wisconsin in search of businesses which might want to expand outside of the home state.

Now officials have expanded their horizons outside the country as well. A delegation went to Toronto this week (May 9) in an effort to interest more Canadian businessmen in expanding their operations in Michigan.

"We have a lot to offer," says Gov. William G. Milliken. "We have a labor force that is well trained and noted for its high productivity, and we have well developed industrial sites ready for new plants in almost every part of Michigan."

The aim in all this effort is to make the state less reliant on the auto industry so that a dip in autos automatically doesn't mean serious troubles for Michigan any more.

But while they are looking for new business for Michigan, the state officials can't relax about their own businesses, either. Ohio Gov. John Gilligan recently made a pitch to a Detroit audience inviting Michigan industry down to his state.

Study Still Fought  
Metal studs are as big an issue as ever, and the State Highway



**QUALITY  
and  
SERVICE  
FIRST**  
Many styles.  
Reasonable prices.  
PAY LESS  
FOR  
THE BEST

**WINANS  
OPTICAL**  
Phone 475-1233  
114 N. Main St.  
(In Sylvan Hotel)  
CHELSEA, MICH.  
DAVID WINANS  
OPTICIAN  
APPOINTMENTS  
NOT NECESSARY

## JUST REMINISCING

Items Taken from the Files of The Chelsea Standard

## 4 Years Ago ...

Thursday, May 9, 1968—

Peter Carl Flintoff, son of Mr. and Mrs. Howard W. Flintoff of 810 S. Main St., will receive his JD (doctor of jurisprudence) degree from the University of Michigan Law School today. A 1961 graduate of Chelsea High school, Flintoff attended Northwestern University, from which he earned a BS degree with departmental honors in history.

Suzanne Knickerbocker has received an honorary \$50 Regents' Alumni scholarship from the University of Michigan, according to an announcement made yesterday by Ivan W. Parker, U-M's associate director of financial aids. The scholarship was granted in recognition of Suzanne's academic performance, intellectual potential as indicated by scores received on a competitive nation-wide test, and the record of her citizenship. Suzanne, a senior at Chelsea High school, is the daughter of Mr. and Mrs. George A. Knickerbocker of 1221 Freer Rd. She is a member of the National Honor Society, works on the annual (yearbook) staff, and sings in the St. Paul United Church of Christ choir.

Susan Guenther, a junior at Chelsea High school, has been chosen by Herbert J. McKune Unit No. 31, American Legion Auxiliary, to participate in the annual American Legion Auxiliary Girls State.

Sandra Knoll took on another new title Saturday, April 27 when she was elected Chelsea High school

Sandra Knoll took on another new title Saturday, April 27 when she presided at the starting line of the Explorer's Scouts' Safe-Driving Road Rally in Dearborn as "Miss Road Rally." The rally, a test of safe driving skills and the ability to follow road maps and instructions, was sponsored by the Portage Trails Boy Scout Council, in cooperation with the Sports Car Club of America and the Lincoln Mercury Division of the Ford Motor Co.

It still wants the legislature to ban them from Michigan highways, saying it will cost nearly a quarter of a billion dollars over the next nine years to repair damage done by the studs if they aren't removed.

"As the concrete surfacing wears down, the exposed aggregate material on some stretches of Michigan highways is beginning to resemble the cobblestone streets you see in Europe," Highway Director Henrik Stafseth said recently.

There is some hope, he says, that the campaign his department has been waging against the studs is having an effect. New surveys taken by the department indicate that the proportion of cars and trucks using studded tires dropped this past winter from 15.2 percent to 11.8 percent.

That publicity has included findings that the studs can be hazardous and can cause hazardous highway conditions.

Studs actually lengthen stopping distances as much as 27 percent on dry or wet pavement, he says.

In addition, they rub out pavement lane markings and wear out anti-skid materials applied to highway surfaces. And ruts worn in the pavement can cause vehicles to hydroplane during rainstorms and go out of control.

## Michigan College of Literature, Science and the Arts.

Chelsea Co-operative Nursery met May 1 at the home of Mrs. James Gaunt to hold their annual meeting and election of officers. Mrs. Keith Poulson was re-elected chairman, with Mrs. J. Raymond Seitz, co-chairman; Mrs. William Chandler, treasurer; Mrs. Paul Mann, secretary; and Mrs. Paul Boehler as representative to the Huron Valley Area Council of Co-operative Nursery Groups. Mrs. Boehler will also serve the area council as co-ordinator to the Michigan State Council of Co-operative Nursery Groups for the 1968-69 year.

## 24 Years Ago ...

Thursday, May 6, 1948—

Three teachers of the Chelsea Public schools and a teacher in a rural school near Chelsea have been picked as nominees for "The Best Teacher in the United States," in the 1948 Best Teacher contest conducted by the Quiz Kids radio program. In addition, the rural teacher, Mrs. Ruth Zeeb, teacher at the Red School on Manchester Rd. at Pritchard Rd., has been notified by John Lewellen, Quiz Kids Program Director, that she is one of the 10 teachers, out of more than 35,000 nominated, who are still under consideration for one of the awards to be made in person on the radio program, probably late in May. Others nominated were Chelsea teachers, Miss Mabel Fox, Miss Brown, and Miss Virginia Bentley. Mrs. Zeeb's name was entered as a nominee as the result of a letter written by Irven Knickerbocker, a pupil at the Red School.

Kay Vogel, seven-year-old daughter of Mr. and Mrs. Clarence Vogel, appeared on the Children's program of Station WPAQ, Ann Arbor, Saturday morning, singing the solo, "Now is the Hour." Her sister, Phyllis, played the accompaniment on the piano. Another sister, Sally, was interviewed by the Story Teller Lady, Miss Bowne. The interview was impromptu and was a surprise to listeners here as well as to Sally.

Mr. and Mrs. O. G. May entertained at a family dinner at their home Saturday evening, the occasion being a celebration of their son LeRoy's 20th birthday and a farewell party for their daughter, Mrs. George Winans, who with Mr. Winans, left Sunday for Peoria, Ill., where the latter is attending school.

## 34 Years Ago ...

Thursday, May 5, 1938—

Mrs. J. V. Burg and daughters, Angeline and Virginia, and Dick Lyons were in Detroit on Thursday to attend the School of Instruction on Soda Fountain Service, held at the Arctic Ice Cream Co.

Frederick Strietter, of Chelsea, received recognition for outstanding scholastic achievement in the sophomore class in the College of Engineering at the annual honors convocation held at the University of Michigan on April 29.

Hinderer Brothers, groceries and meats, advertises the following prices for the week: 1 lb. Best Creamery butter, 23 cents; 5 bars Fels-Naptha soap, 23 cents; 80 size Arizona grapefruit, 7 for 25 cents; 2 lbs. Jewel shortening, 25 cents; 5 lbs. yellow corn meal, 13 cents; 4 rolls Summit Tissue, 23 cents; and 4 bars Sweetheart soap, 19 cents.

Margaret Lehman has been chosen as valedictorian of the senior class, Chelsea High school. Miss Lehman's high school record is a 2.929 grade out of a possible 3.0, which would be an all-A record. Miss Marjorie Heurion will be salutatorian, with a record of 2.807.

The annual wage proposal appears to be an economic mirage to Michigan automobile workers. At the White House the other day, Henry Ford blasted rumors that he was planning to inaugurate an annual wage for workers in his River Rouge industrial empire. He informed Roosevelt that the law of supply-and-demand still prevails.

## Howell

Mason 677-8941

## Livestock Auction

The Wise Owl Says Ship to Howell  
**SALE EVERY MONDAY, 2 p.m.**  
Phone 546-2470, Bim Franklin

## Market Report for May 1

Good-Choice Heifers, \$33 to \$35.50  
UT-Commercial, \$28 to \$33  
UT-Std., \$29 and down.

## CATTLE—

Good to Choice Steers, \$35 to \$36.50  
Fed Holstein Heifers, \$30 to \$33  
Cull & Wtd., \$29 and down.

## COWS—

Heifer Cows, \$28 to \$30  
UT-Commercial, \$28 to \$29  
Cull & Wtd., \$27 to \$28  
Fat Beef Cows, \$24 to \$26

## BULLS—

Heavy Bologna, \$28 to \$29  
Light & Common, \$28 and down.

## CALVES—

Prime, \$55 to \$60  
Good-Choice, \$50 to \$55  
Heavy Duncans, \$45 to \$55  
Cull & Wtd., \$35 to \$45

## FEEDERS—

300-400 lb. Good to Choice Heifers, \$32 to \$35  
400-700 lb. Good to Choice Steers, \$34 to \$42  
300-500 lb. Holstein Steers, \$28 to \$42  
500-800 lb. Holstein Steers, \$30 to \$38  
Common-Med., \$29 and down.

## SHEEP—

Shorn Stewards Lamb: Choice-Prime, \$30 to \$32.50  
Good-Utility, \$26 to \$30

Woolled Slaughter Lamb: Choice-Prime, \$28 to \$30  
Good-Utility, \$25 to \$28  
Slaughter Cows, \$6 to \$11  
Feeder Lambs, all weights, \$28 to \$29

## HOGS—

200-250 lb. No. 1, \$25 to \$25.50  
200-250 lb. No. 2, \$24 to \$25  
240 lb. and up, \$22 to \$24  
Light Hogs, \$24.50 and down.

## Sows—

Fancy Light, \$21 to \$21.50  
200-250 lb., \$20 to \$22  
500 lb. and up, \$19.50 to \$20

## Boars and Stags—

All weights, \$20 to \$22

## Feeder Pigs—

Per Head, \$20 to \$26

## HAY—

1st Cutting, 70c to \$1.10  
2nd Cutting, \$1.00 to \$1.20

## STRAW—

Per Bale, 60c to 80c

## COWS—

Tested Dairy Cows, \$300 to \$500  
Tested Beef Type Cows, \$250 to \$350

25,000 4-INCH  
GERANIUMS

at Same Low Price

75¢ ea. \$8.00 doz.

## POTTED PLANTS

Hardy Mums .....50c ea.  
Tuberous Begonias .....75c, \$8.00 doz.

## FLOWERING PLANTS

Flowering Plants .....30c pak, \$3.50 flat

★ Petunias  
★ Zinnias  
★ Asters  
★ Marigolds  
★ Moss Rose  
★ Phlox  
★ Pansies  
★ Salvia  
★ Snapdragons  
★ Carnations  
★ Alyssum  
★ Delphinium  
★ Ageratium  
★ Dwarf Dahlias

Patio Pots filled with your favorite selection of plants, \$5.00 up

Redwood Combination Boxes .....\$6.00  
Cemetery Urns filled .....\$7.50 up

## VEGETABLE PLANTS

Vegetable Plants .....30c pak, \$3.50 flat

★ Tomatoes  
(Most popular varieties)  
★ Peppers  
★ Cabbage  
★ Brussel Sprouts  
★ Head Lettuce  
★ Broccoli  
★ Sweet Onions  
★ Egg Plant  
★ Sweet Potatoes  
★ Cauliflower

Canadian Peat Moss, 6 cu. ft. ....\$5.00

Combination Pots Geraniums  
.....\$4.00 and up

**OPEN EVERY DAY**  
from 8 a.m.

Free Local Delivery every day on all items except Annuals.

All Items Grown in Our Greenhouses.

## CHELSEA GREENHOUSE

MEMBER FTD — WE TELEGRAPH FLOWERS ANYWHERE

7010 LINGANE ROAD, CHELSEA

PHONE 475-1157





TWO SPOKESWOMEN from Ann Arbor's ENACT joined Kiwanis members at their weekly meeting Monday, May 1 to discuss what each of us as individuals can do to further the ecological future of our world. Discussing the women's suggestions concerning waste recycling, fertilizers, and pollution, are (left to right) Robert Benedict, Charles Cox, program chairman, Mrs. Jo Haynes, from ENACT, V. O. Johnson, Tom Smith, and Mrs. Sherri Smith, of ENACT.

## ENACT Spokesmen Tell How To Help Stop Polluting Earth

Two members of Ann Arbor's ENACT, an ecology organization, spoke to Kiwanis members at their weekly meeting Monday, May 1. Mrs. Jo Haynes and Mrs. Sherri Smith offered suggestions to the members as to how they as individuals can help to stem what seems to be the inevitable pollution of our planet.

Everyone tends to blame big business for our current ecological situation but the two spokeswomen pointed out that there are very tangible steps that everyone can take to help the environment.

Their main point seemed to center around the idea of ridding the market of plastics which are not biodegradable and thus do not return to the soil. They suggested buying products which are packaged in paper boxes rather than the common plastic cartons. Trash should also be thrown away in heavy paper bags rather than the plastic variety. Plastics industries are working on new water soluble plastic trash bags which will readily decompose but until they are available paper bags are preferable.

In regard to pollutants, they advised housewives to use common Ivory or Lux soap in a combination with washing soda, much like our ancestors did, to clean clothing. Detergents are very hard on clothes but they work; however, the phosphates in the detergents will not break down and thus severely pollute water sources.

To the men around the house, the women suggested making compost piles in the garden to be used as fertilizers instead of the commercial chemical fertilizers. This organic fertilizer will replenish the nutrients in the soil, whereas the chemical fertilizer tends to sterilize the soil, killing all the bacteria

and ruining the soil over a period of years.

The women also warned about the dangers of aerosol spray cans. The freon and other hydrocarbons in the can may be dangerous to humans after prolonged use, causing damage to lungs, liver, and causing various skin diseases.

A final suggestion is one simple way the entire family can help the community in regard to adequate sanitary landfills. In a few years there will probably be a shortage of space to be used as landfills for

garbage and trash. Great metropolitan areas such as Detroit and even little villages such as Chelsea will be faced with the problem of what to do with the mountains of trash thrown away by their growing populations. One answer is to cut down the sheer bulk of the waste material. Bottles, cans, and paper should be saved from the weekly trash and taken to recycling centers where it can be converted and used again. Another step is to buy beverages only in returnable bottles which will insure its re-use.

## Auctioneer Edwin H. Murto Considered Expert on Antiques

"I've got \$90, do I hear \$100? \$100, do I hear more? \$100, going once, going twice, sold to the lady in the back row."

These, or similar words, could be spoken by Edwin H. Murto, a new resident of the Chelsea area and an auctioneer by profession.

Murto moved to 600 Long Lake recently from Detroit, where he has lived since 1937. He previously owned and operated his own gasoline station and was a real estate broker in the Detroit area before becoming an auctioneer eight years ago. He learned his profession at the Reich American Auctioneering School in Mason City, Ia., and currently operates Farm Center Realty at the Long Lake Rd. address. The Murto has owned a cottage on the site for years but has only recently completed a permanent home there.

Murto deals in the sale of farm, home, commercial, and personal items as well as antiques. He is considered an authority on antique

in lower Michigan and bordering states and is often called upon to appraise items at large antique shows in Detroit. Because of his experience in the field, he says he rarely has to research an antique item before he is able to sell it. However, he says he is still baffled after all these years by what people will buy and how much they will pay for an item at an antique auction. He once sold a plain liquor bottle from the 1800's for \$100 and regularly sells the common old kitchen wood boxes for \$40 to \$45. The highest priced single antique item that he has ever sold was a double commode for \$250.

Unlike less scrupulous auctioneers, Murto flatly states that he never pads or overstates the quality of an item either in pre-sale advertisement or during the actual bidding, nor does he use "shills" in the audience which are commonly used to bid up the price of an item.

### CARD OF THANKS

How hard it is to say thanks to so many who did so much for the Cancer Drive. To Pat Robbins and the Junior High P.F., to Barb and Dan Robbins and the Senior High P.F. of the Congregational church a big thanks for the great Cancer Tag Day sale. To the Congregational church for the use of the kitchen and dining room, to all who donated food and helped at the Cancer Luncheon I am most grateful. To Seitz's for winning the Bar Buck Contest, congratulations. To Gloria, Ruth, Virginia, and Tessie, I couldn't have done it without your help. And to all the people of this great community, with your help and donations we doubled our goal for the 1972 Cancer Drive. From the bottom of my heart to all of you, many, many thanks.

Loydell Keezer.

### CARD OF THANKS

I would like to thank friends, relatives, and neighbors for the beautiful flowers and cards that I received in the hospital and since my return home. It was all very much appreciated.

Opal Slane.

### CARD OF THANKS

We wish to express our appreciation for the many acts of kindness shown by our neighbors and friends during the death of our husband and father, George H. Browning.

Mrs. George H. Browning, George L. Browning.

### THANK YOU

I would like to thank friends, relatives, and neighbors, the staff of the Medical Center and Hospital, and Dr. Pappo, Dr. Any and Dr. Burke, for their kindness shown to me during my stay in the hospital.

Ray Krugler.

### THANK YOU

We wish to express our thanks and appreciation to all who sent messages of sympathy, the acts of kindness and the beautiful flowers, to Rev. Leroy Johnson for his kind words, at the time of the loss of our husband and father.

Mrs. Edwin Bauer and family.

### CARD OF THANKS

I wish to thank all my friends, relatives, and neighbors for the cards, visits, and gifts while in the hospital and since my return home. Also Pastor Morris for his visit and prayer. All was greatly appreciated.

Alfred Schneider.

### THANK YOU

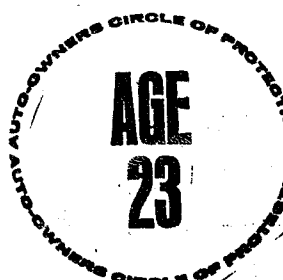
Please accept my most heartfelt thanks for a most wonderful anniversary reunion. Special thanks to Pastor Siebert and Duke Weiss in charge of the basketball game, the Brothers and Sisters in the band, Steve Siebert in charge of the souvenir pictures, Mrs. Susan Harding and girls from Chelsea, all the wonderful parents in charge of preparing and serving the food, and the most beautiful table decorations. Not forgetting the fathers and sisters and the loyal staff at the St. Louis school for the many hours of work arranging this day. It would be impossible to name each one, but the co-operation of everyone involved was greatly appreciated and is a day we will remember always. God Bless you all.

Father Louis Frangi, Director St. Louis School.

## Forensics ...

(Continued from page one)

May 13 in Ann Arbor. Judging for the stiff regional competition, in which only three students qualify in each of the categories, was performed by EMU and U. of M. speech faculty members, however, in the state competition, judging duties will be handled by various club coaches, perhaps because it is felt they are closer to the spirit of the competition.



## Married Male Driver

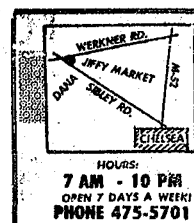
Your A-O man will save you money on your car insurance. No surcharge or higher rate. See your A-O man — he's all out for you.

**A. D. MAYER AGENCY, INC.**

"Your Protection Is Our Business" Phone 479-5061

115 Park St. Chelsea

**Auto-Owners INSURANCE COMPANY**  
Home office at Lansing, Michigan



# Jiffy market

BIG ENOUGH TO SERVE YOU.....SMALL ENOUGH TO KNOW YOU!

Corner of SIBLEY & WERKNER RDS....CHELSEA, MICHIGAN

SALE PRICES EFFECTIVE THURSDAY, MAY 4, THRU SUNDAY, MAY 7, 1972.

**Store Hours Are 7 a.m. to 10 p.m. 7 Days A Week**

Beat the High Meat Prices BUY THE WHOLE THING!		U.S.D.A. CHOICE	AGAR or CUDAHAY
WHOLE <b>Pork Loins . . . lb. 69¢</b>		<b>CHUCK STEAK</b>	<b>Can Hams</b>
WHOLE <b>Pork Butts . . lb. 59¢</b>		Blade Steak <b>69¢ lb.</b>	5-Lb. Can <b>\$4.49</b>
		7-Bone Cut <b>79¢ lb.</b>	SLICED FREE!
MEADOWDALE <b>SLICED BACON</b>	CAMELOT <b>SKINLESS HOT DOGS</b>	HURRUD <b>CHUNK BOLOGNA</b>	ECKRICH <b>SMORGAS PACK</b>
1-Lb. Pkg. <b>69¢</b>	2-Lb. Pkg. <b>\$1.28</b>	<b>59¢ lb.</b>	1-Lb. Pkg. Reg. or All-Beef <b>99¢</b>
			PESCHKE'S CHUNK <b>LIVER SAUSAGE</b>
			<b>59¢ lb.</b>

**COFFEE . . .** Maxwell House or Hills Bros. 1-Lb. Can **75¢**

AUNT JEMIMA <b>PANCAKE SYRUP</b>	MICHIGAN <b>SOUR CREAM</b>	40-Lb. & 80-Lb. Bags <b>SALT NUGGETS</b>	FRESH BAKED <b>SWEET ROLLS</b>	CROWN <b>SWEET PICKLES</b>
1 Pt., 8-Oz. <b>58¢</b>	Pint <b>39¢</b>	40-Lb. Bag <b>\$1.29</b>	1-Lb. Pkg. ea. <b>10¢</b>	1 Qt. <b>49¢</b>

**BUTTER . . .** Michigan Band 1-Lb. Patty **69¢**

KLEEN-MAID <b>BREAD</b>	JESTER <b>CANNED DOG FOOD</b>	RISDON'S <b>HOMOGENIZED MILK</b>	KELLOGG'S <b>CORN FLAKES</b>	COME IN Visit Chelsea's Newest LIQUOR DEPT.
Way Baking Co. 1/4-Lb. Loaf <b>18¢</b>	15 1/2-Oz. Can <b>9¢</b>	<b>89¢ gal.</b>	Family Box 1-Lb. 2-Oz. Box <b>29¢</b>	

**CIGARETTES . . .** JIFFY MARKET All Sizes SPECIAL — Your Choice Crtn. **\$3.25**

JIFFY <b>BUTTERMILK BISCUIT MIX</b>	LIBBY'S <b>Yellow Cling PEACHES</b>	KRAFT AMERICAN <b>CHEESE SLICES</b>	HANOVER OLD FASHION <b>THREE BEAN SALAD</b>	MEADOWDALE <b>CORN CURLS</b>
8-Oz. Box <b>9¢</b>	1-Lb. 13-Oz. Can <b>29¢</b>	1-Lb. 8-Oz. Twin Pack <b>\$1.19</b>	1-Lb. 10-Oz. Jar <b>39¢</b>	1-Lb. Pkg. <b>38¢</b>

**Duncan Hines LAYER CAKE MIXES**

**29¢**

PLUS: Free REFRIGERATOR SHEET CAKE RECIPES in our Store

**CHOCOLATE CHERRY REFRIGERATOR SHEET CAKE**  
(Makes 16-20 servings)

1 package Duncan Hines Deep Chocolate Deluxe Cake Mix  
1 package cherry gelatin (4 serving size)

Topping  
1 envelope whipped topping mix (2-2 1/2 cup yield)  
1 package chocolate instant pudding mix (4 serving size)  
1 1/2 cups cold milk

Preheat oven to 350°.  
Dissolve gelatin in 3/4 cup boiling water. Add 1/2 cup cold water; set aside at room temperature. Mix and bake cake as directed in a 13 x 9 x 2-inch pan. Cool cake 20-25 minutes. Poke deep holes through top of warm cake (still in pan) with meat fork or toothpick; space holes about one inch apart. With a spoon slowly pour gelatin mixture into holes. Refrigerate cake while preparing topping.  
TOPPING: In a chilled, deep bowl, blend and whip topping mix, instant pudding, and cold milk until stiff (2-3 min.). Immediately frost cake. If desired, garnish with maraschino cherries.  
Cake must be stored in refrigerator and served chilled. Frosted cake may be frozen for storage.

# MARATHON DISCOUNT GAS PUMPS

Finest Top Quality Gas at Low Discount Prices!



<b>MARATHON REGULAR GAS</b>	<b>31.5 gal.</b>
Includes All Taxes	
<b>MARATHON PREMIUM GAS</b>	<b>34.5 gal.</b>
Includes All Taxes	

<b>KLEER - VIEW WINDSHIELD WASHER SOLVENT</b>
<b>59¢ gal.</b>

**GAS PUMPS & STORE OPEN 7 a.m. to 10 p.m. 7 Days a Week**

## HOW TO BECOME AN 'AFTER' WITHOUT DIET CONTROL PILLS, STARVATION DIETS, EXHAUSTING EXERCISES OR CRASH PROGRAMS.

You can do it through the Weight Watchers Program... the sensible reducing program that really works. And it works because it's people helping people... people who care... who encourage, bolster, teach. You learn from lecturers who understand what it's like to be overweight because they once were fat themselves. They're on your side. You learn with other people just like yourself... people with common problems and common goals. They're on your side, too. So you see, you're not alone. Give Weight Watchers a chance. Give yourself a chance. Why Weight? Call Weight Watchers now for the class nearest you. There's no obligation, of course. Open to men, women, youths. 663-1414



**WEIGHT WATCHERS.**  
365 N. MAPLE, MAPLE VILLAGE SHOPPING CENTER, ANN ARBOR 48103



Ads  
Taken  
Till 5 p.m.  
Tuesday

IT'S EASY TO  
BUY-SELL-RENT-  
HIRE & FIND WITH

**WANT ADS**

Just  
Call  
GR 5-3581

**WANT ADS**

**The  
Chelsea Standard**  
WANT AD RATES

PAID IN ADVANCE—All regular advertisements, 50 cents for 25 words or less, each insertion. Count each figure as a word. For more than 25 words add 2 cents per word for each insertion. "Blind" ads or box number ads, 35c extra per insertion. CHARGE RATES—Same as cash in advance, with 15 cents bookkeeping charge if not paid before 5 p.m. "Live" day preceding publication. For in advance, send cash or stamps, and save 15 cents. DISPLAY WANT ADS—Rate, \$1.10 per column inch, single column, width only. 8-point and 14-point light type only. No borders or balloons type. Minimum 1 inch. CARDS OF THANKS or MEMORIALS—Single paragraph style, \$1.00 per insertion for 50 words or less; 2 cents per word beyond 50 words. COPY DEADLINE—5 p.m. Tuesday week of publication.

**KNAPP SHOES**

For Cushion Comfort  
Robert Robbins  
475-7282

**FORMAL WEAR**

RENTAL SERVICE  
Proms - Weddings. Special Events  
6 different colors.

**Foster's Men's Wear**

**REAL ESTATE**

4-ROOM Cedar Lake cottage. Excellent waterfront lot, \$16,000. Good terms.

**R. D. MILLER  
REAL ESTATE**

Real Estate Broker  
475-7311  
15775 Cavanaugh Lake Rd.  
Chelsea, Mich.

**Seamless  
Aluminum Gutters**  
White, brown, black or green.  
WILSON METAL SHOP  
428-8468, Manchester

**Gem Travel Trailers  
and Campers**

PICK UP COVERS  
4" ————— \$100.00  
26" ————— \$179.00 and up.

**Triangle Sales**  
Chelsea 475-4509

1969 CHEVROLET Impala Custom 2-dr. hardtop, V-8, automatic, p.s., green with black interior. \$1595. Open Sat. 8:30 a.m. to 5 p.m. Mon., Tues. and Thurs. 8:30 a.m. to 9 p.m. Wed. and Fri. 8:30 a.m. to 6 p.m. Devon Lincoln-Mercury, 2100 W. Stadium, Ann Arbor, Phone 662-5555.

DIAMOND ROOFING, reroofing and repainting. Roof louvers installed. Gutters cleaned. Licensed roofer. Call 475-1129.

FOR SALE—Full-layered wedding gown, size 9, with matching peacock train and veil, hoop included. Ph. 475-7342.

**WANT ADS**

1969 MERCURY Cougar XR-7. Red with black interior, black vinyl top, air conditioning. \$2295. Open Sat. 8:30 a.m. to 5 p.m. Mon., Tues. and Thurs. 8:30 a.m. to 9 p.m. Wed. and Fri. 8:30 a.m. to 6 p.m. Devon Lincoln-Mercury, 2100 W. Stadium, Ann Arbor. Phone 662-5555.

FOR SALE—2 acres on Ivy Rd. Call 475-1282.

**STILL AVAILABLE**

Funk's G Seed Corn  
All varieties and grades  
on hand

Harold Trinkle  
& Sons  
Ph. 475-8992

Merion Blue Sod  
Now Cutting Daily

AMERICAN BEAUTY  
TURF NURSERIES  
3203 Dexter Trail, Stockbridge  
Phone (517) 851-7373

**CLOGGED  
SEWER**

Reynolds Sewer  
Service

We Clean Sewers Without Digging  
Drains Cleaned Electrically  
FREE ESTIMATES  
Phone Ann Arbor NO 2-5277

"Sewer Cleaning Is Our Business—  
Not a Side Line"

CAR & TRUCK LEASING. For details see Lyle Chriswell at Palmer Motor Sales, GR 5-8271.

**Special of the Week**

1971 Ford Custom 1/2 ton pick-up, like new, 15,000 miles. \$2495

**USED CARS**

1971 Olds 98 4-dr. hardtop. Vinyl top (air cond.). \$3995

1969 Buick Gran Sport. Vinyl top. Like new. \$1695

1968 Olds Delmont 88 2-dr., 28,000 miles, one owner. \$1495

1968 Buick LeSabre Custom 4-dr. hardtop. Vinyl top. \$1395

1968 Buick LeSabre 2-dr. hardtop. Vinyl top. Real nice. \$1495

1968 Buick LeSabre 4-dr. sedan. Real nice. \$1395

1968 Chev Impala 2-dr. hardtop. Air cond. \$1495

1967 Olds Vista Cruiser Custom (air cond.) Clean. \$1395

1967 Buick LeSabre 4-dr. sedan. \$1095

1967 Olds 98 Luxury sedan, full power (air cond.). \$1395

1968 Skylark Custom 2-dr. hardtop, vinyl top, clean. \$1095

1967 Skylark Custom convert. (air cond.) \$1195

1966 Buick Special 4-dr. sedan \$595

1962 Volkswagen. Sun roof. \$395

**SPRAGUE  
Buick-Olds-Opel, Inc.**

1500 S. Main St., Chelsea  
Phone 475-8664

HELP WANTED—Body man, experience necessary. Excellent pay plan. Apply Ken Morris, Keto, Inc., 8080 Grand, Dextre.

HELP WANTED—Secretary to president, with accounting background. If you would like a career with local firm, write qualifications and salary requirements to Box MA-4, care of Chelsea Standard, Chelsea, Mich. 48118.

**WANT ADS**

ROBERT PATRICK for home improvement, building and maintenance. Ph. 475-7460.

HAMMOND ORGAN teachers wanted to teach in their own homes. Call Grinnell Brothers, Ann Arbor. 662-6697.

CALL FRANK for all your carpet cleaning jobs, morning or week-end. Needs only 3 hours to dry. Only 10c per square foot. Phone now for free estimate, 761-4328. All work guaranteed.

PIANO TUNING, Chelsea and area. Facilities for reconditioning and rebuilding. Used piano sales; reconditioned grands and verticals. E. Eklund. 426-4429.

Contractor Servicing  
Chelsea, Dexter and  
Manchester Areas

Complete Home Remodeling  
Inside and Outside

Specializing in extra living space, recreation rooms, kitchens and pantries. Installing all aluminum products, 5" eavestroughs, custom-made awnings, windows and doors, aluminum siding in many selected colors and styles.

Please Call

DALE COOK  
Chelsea 475-8863

NOW  
Full Time  
Complete  
Body Shop  
Service

Stop in For An Estimate

PALMER FORD  
222 S. Main St.  
475-3271

FOR REAL DOLLAR SAVINGS  
be sure and see us before you buy any new or used car. Palmer Motor Sales, Inc. Your Ford Dealer for over 50 years.

G. G. HOPPER  
Building Contractors  
Phone GR 5-5581  
Gregory 498-2148

Professional Siding  
Application Service

Specializing in...  
Solid VINYL Siding  
and solid VINYL Trim

We have all the special equipment necessary for on the job professional fabrication and application of the perfect SIDING and TRIM—SOLID VINYL. Rigid VINYL is as efficient as wood, 288 times more efficient than steel, 1,080 times more efficient than aluminum.

Call or Write

D. Edwards & Sons  
5450 Conway Rd., Chelsea  
Phone 475-2014  
FREE ESTIMATES

Paige & Associates  
800 E. Stadium  
Ann Arbor, Mich. Phone 761-2910

NORTH OF CHELSEA

TWO 3-acre country building sites. Rolling terrain, deer and game. Beautiful view. \$7,500 per site. Each 200' x 600'.

A CHARMING two-bedroom, modernized home with expansion attic and full basement, on 4-acre site.

Evenings call Jack Elzay, 663-6166 or Lyle Paige, 665-5877

Paige & Associates  
800 E. Stadium  
Ann Arbor, Mich. Phone 761-2910

FOR SALE—House trailer, 10'x35' Detroit 1960. 1-bedroom, furnished, \$1,750. Needs hot water heater. Inquire at Lot 18, Chelsea Trailer Park, N. Main, after 6 p.m.

HELP WANTED—Mature, dependable women wanted to work in department store. Apply Monday, Wednesday, Thursday or Fridays between 10 a.m. and 5 p.m. to K-Mart on North Maple, Ann Arbor.



"I bet that bait shop I saw in the Standard Want Ads gets all of your worm business!"

**WANT ADS**

PATCHING AND PLASTERING.  
Call 475-7489.

A fine selection of  
New and Used Cars  
for immediate delivery

Harper Pontiac  
Sales & Service  
475-5311  
Evenings, 761-2999

CLARENCE WOOD  
REAL ESTATE

NEW LISTING—Two-story brick colonial, 4 bedrooms, 3 baths, family room with fireplace. Paved and carpeted rec room. Spotless. \$48,500.

CAVANAUGH LAKE—Lake-front cottage, 12x24 living room, 2 bedrooms, kitchen, full bath and screened porch. Fully remodeled, needs finishing. \$14,500.

BUILDING LOT—60 ft. x 132 ft. Village water and sewer. Located on Dewey St.

CLARENCE WOOD  
BROKER  
Efficient PERSONAL Service  
646 Planders St., Chelsea  
Phone 475-2033

PROM TIME  
is here  
Formal Wear at its finest.  
10 colors in shirts  
Orders should be placed 2 weeks in advance.

Strieter's Men's Wear

Real Estate  
For Sale

4-BEDROOM home with 2 baths, living room, dining space, modern kitchen, full basement.

See or Call

Kern Real Estate  
616 S. Main, Chelsea  
or phone 475-8563

CASH  
for homes in 24 hours

Trust Realty Co.  
769-7750

Time for a Change...

... from old, worn down tires to SAFE new ones! Come in today!

Your tires have been taking a real beating... How much longer can they stand up? Better to be safe than sorry! Trade them in on a new set.

UNION 76 OIL PRODUCTS

Jim's Union 76 Service

Tires — Batteries — Tune-Ups — Brake Service — Wheel Alignment

PHONE 475-2822

501 SOUTH MAIN

**WANT ADS**

LOST—Male Walker fox hound. Dark brown, white and red ticking on legs. (517) 851-8605. Call collect.

Hearthside Yarn Shop  
5450 Conway Road.  
Yarns, needles, accessories  
Free instructions in knitting and crocheting with follow-up assistance.  
Orders taken for hand-made items.

Ph. 475-2014

Low Low  
Down Payment  
On New  
GOLD KEY  
MORTGAGES

For information ask your Realtor or call 663-7555.

Ann Arbor Federal  
Savings

CAR RENTAL by the day, week-end, week or month. Full insurance coverage, low rates. Call Lyle Chriswell at Palmer Motor Sales GR 5-8271.

SALESMEN  
\$8400 plus for a year  
Hospitalization  
Retirement  
and other benefits.

TRUST  
REALTY CO.  
1207 Packard, Ann Arbor  
769-7750

New  
Buescher Clarinets  
Regular \$168  
Now \$155  
Rental-Purchase Available  
Also Savings on Corinets and Trombones

AL NALLI MUSIC  
Chelsea 475-7215

WANTED—Odd jobs, painting, cement work, anything else. 475-2750 or 475-2172.

FOR SALE—Maple double-bed, spring and mattress. Ph. 475-2749.

FOR SALE—'69 Ford XL, 351, 2V, p.s., and p.b., radio, heater, white vinyl sports roof. 475-8320.

REPAIR SERVICE for household refrigerators, freezers and garbage disposers. Call Bill, 426-8314.

**WANT ADS**

ADMIRAL  
See the new Admiral color television. No color adjusting necessary.

SERVICE ON ALL MAKES  
TV - RADIO - STEREO  
Antenna Sales  
and Installation.

PORTER'S TV  
212 Buchanan St., Chelsea  
Ph. 475-8380

BABYSITTING in my home. 208 South St. 475-7822.

60th  
ANNIVERSARY  
SALE  
ONLY  
\$1912  
Delivered, including  
Sales Tax

1972 PINTO  
ONLY  
\$1995  
With automatic transmission,  
power steering, radio

1972 TORINO  
2-Dr. Hard Top  
ONLY  
\$2595

1972 GALAXIE 500  
2-Dr. Hard Top  
ONLY  
\$2995

With 351" V-8,  
automatic transmission,  
power steering,  
radio.

PALMER FORD  
Since April 1912  
Open Evenings Till 9:00  
Chelsea 475-3271

USED CARS

'70 CHALLENGER SE, V-8, auto, p.s., console. \$2150

'69 CAMARO 2-dr. hardtop, 6 cyl., auto, radio, deluxe interior. \$1450

'68 CHEVELLE SS 396, 4-speed, mag wheels, RWL tires, radio. \$1350

'68 OLDS Cutlass, 2-dr., hardtop, V-8, auto, p.s., p.b. \$995

'68 DODGE Coronet 4-dr. sedan, 6 cyl., 3-speed, radio. \$625

'68 VALIANT 2-dr., 6 cyl., automatic, radio, new shocks, battery and exhaust system \$995

'68 VW square back sedan, 4 speed, radio. \$1095

'67 FORD Fairlane 500, 2-dr., V-8, 3-speed, p.s., radio, radio tires. \$895

'67 CHRYSLER Town & Country 2-seat wagon, 383, auto, p.s., p.b., tinted glass. \$995

'68 DODGE CORONET 2-seat wagon, V-8, automatic, power steering, radio. \$1095

'65 CHEVROLET 4-dr. sedan, 6 cyl., 3-speed. Immaculate \$495

'63 CHRYSLER 4-dr. V-8, auto, p.s., p.b., radio, good. \$350

TRUCKS

'71 DODGE D-200, 318, auto, p.s., p.m., camper special, new 8-ply rating tires, step bumper, West Coast mirrors. Sharp. \$2895

'70 DODGE D-100, 318, auto., p.s., step bumper. \$2050

'69 DODGE W-100, 4-wheel drive, 318, 4-speed, locking hubs, Meyers snow plow. \$2295

Village  
Motor Sales, Inc.  
IMPERIAL CHRYSLER  
DIVISION - PLYMOUTH  
1185 Manchester Rd., Chelsea  
Phone 475-8661

Hours: 8 a.m. to 6 p.m.  
Mon. thru Fri. Until 9 Thursday.  
9 a.m. to 2 p.m. Saturday

ELECTROLUX  
VACUUM  
CLEANERS

SALES and SERVICE  
JAMES COX  
Ph. 428-2931 or 428-8221  
Manchester

**WANT ADS**

CALL JOHN'S SHOP for wedding invitations or any type of social stationery. 475-7500 evenings and week-ends.

Fireplace Builder  
Field stone mason, block and brick mason, ruck pointing.  
FREE ESTIMATES  
Call 475-8025 after 3 p.m.

Patrick Grammatico

Glass and Screen  
Repair  
We replace metal and wood windows. Screens replaced in aluminum or wood frames.

Chelsea Hardware  
Phone 475-1121

2-CYCO FUEL  
For All 2-Cycle Engines  
WHITE GAS  
Available at  
Gateway  
Sports Centre, Inc.

ST. BERNARD PUPPIES—AKC reg. of course. Like to belong to one? Monastery Woods Kennels. 426-4831.

1971 FORD MAVERICK 2-dr., 4-cyl., automatic, 19,000 miles. Open Sat. 8:30 a.m. to 5 p.m. Mon., Tues. and Thurs. 8:30 a.m. to 9 p.m. Wed. and Fri. 8:30 a.m. to 6 p.m. Devon Lincoln-Mercury, 2100 W. Stadium, Ann Arbor. Phone 662-5555

60th  
Anniversary  
Used Car Sale

'71 MAVERICK 2-dr. Factory air.

'69 FAIRLANE wagon One owner.

'68 LINCOLN 4-dr. Very nice.

'68 FALCON 4-dr. A real clean one-owner.

'67 GALAXIE 500 4-dr. V-8, automatic.

'66 FAIRLANE Squire wagon.

TRUCKS

'69 CHEV 3/4-ton

'69 DODGE 1/2-ton

'67 CHEV van

'67 INTERNATIONAL

PALMER FORD  
Open Evenings Till 9:00  
Chelsea GR 5-3271

Stereo Floor Consoles

'65' 1972 deluxe floor console

'44' 1972 tape-record player, AM-FM radio console

'32' 1972 solid state audio system

Both light and dark wood finishes available. Starting at \$119. Pay off balance or terms. All solid state, totally transistorized audio systems. Still in factory cartons. 971-3407.

FOR SALE—Good riding horse. (olding. Call 475-2539 after 6 p.m.

CUTE KITTENS—Free. Phone 475-7621.

**WANT ADS**

VACUUM CLEANERS—Electrolux, Invacolor sales and service. James Cox, Manchester. Ph. 428-2931 or 428-8221.

FREE REMOVAL DONE—Also buyers of standing timber and walnut trees. Chelsea 475-7631.

THE LITTLE  
FLOWER SHOP  
3451 Waltrous Rd., Chelsea  
Phone GR 5-8508

Sponsoring Welcome Wagon in Chelsea, Dexter areas.

Flowers, corsages, arrangements and plants.  
Weddings and funerals.

TRAVEL TRAILERS—13-ft. and up; 10x55 ft. trailers. John R. Jones Trailer Sales, Gregory, Mich. Phone 498-2655.

SEE US for transit mixed concrete. Klumpp Bros. Gravel Co. Phone Chelsea 475-2630, 4920 Loveland Rd., Grand Ledge. x40tf

Custom  
Kitchen Cabinets  
and  
Formica Tops  
Made to Order  
475-2857

Stock Reducing  
CARPET  
SALE  
Installation within 48 Hours  
or Do-It-Yourself



## WANT ADS

SALE — 9' racing hydroplane with steering controls. Completely fiberglassed. Very durable. See to appreciate! \$80. 663-8228. x38tf

## ALLSTATE INSURANCE

BOAT - COMMERCIAL LIFE - HEALTH - HOME Phone Eves. or Week-ends for N. H. MILES, Agent GR 5-8334

CHEVROLET Bel Air for sale. Radio and heater. Runs. 426-8200. x46

FORD Galaxie 2-dr. hardtop, 8 automatic, p.p.b. \$1295. Open 8:30 a.m. to 5 p.m. Mon. Tues. Thurs. 8:30 a.m. to 9 p.m. Wed. Fri. 8:30 a.m. to 6 p.m. Devon-Mercury, 2100 W. Stadium, Arbor. Phone 682-5555. x46

WED—Painting done, houses barns. Call 498-2424 after 4

CHEVROLET 2-ton dump truck. Real good condition. Open 8:30 a.m. to 5 p.m. Mon. Tues. Thurs. 8:30 a.m. to 9 p.m. Wed. Fri. 8:30 a.m. to 6 p.m. Devon-Mercury, 2100 W. Stadium, Arbor. Phone 682-5555. x46

FOR YOUR POOL READY for summer. Complete line of swimming pool chemicals. 10% discount on all over \$10.00. Undergound pools installed complete. Prices start at \$3,200. Hilltop Plumbing, Ph. 475-2949. x60

## Schaules Antiques

14450 Island Lake Rd. Chelsea, Mich. ART GLASS - PRESSED GLASS PRIMITIVES - FURNITURE

Bought and Sold PHONE 475-7362 x48

Headquarters for RED WING WORK SHOES

Foster's Men's Wear

KITCHEN ALLEY is a helpful new display kitchen of quality cabinets in every price range. See it now, at Chelsea Lumber. x52

WED MONEY—Sell Sarah Coventry jewelry. No investment. Call Ginger Wilson, 971-0883. x47

FOR SALE—Floor console stereo, never picked up. Factory sealed carton, 1972 model hardwood cabinet, automatic 4-speed record changer. Solid state transistorized radio system. Pay off \$89 balance or assume payments. 971-8407. x46

## WANT ADS

GOVERNOR MILLIKEN stated: "Have more of our fine Great Lakes fish reach local Michigan markets." BAY PORT FISH CO. states: Another fishin' season has started! You, the readers of The Chelsea Standard have first opportunity to buy FIRST from our fresh fish supplies. "PERCH" also, "Carp and suckers" are Fine Great Lakes fish. TRY 'EM—You'll like them. (I just can't believe it!) BAY PORT FISH CO., Henry Engelhard, phone (517) 656-2121. x47

## Quality Evergreens

Spreading and Hicks Yew, Pyramidal and Globe Arbor Vitae, Pfitzera, Birch Clumps, Mountain Ash, Flowering Crab, Norway and Chinese King Maples. You dig your own.

All State Inspected Free Estimates

## Faist's Evergreen Nursery

11362 Trist Rd., Grass Lake, Ph. (517) 522-4588

## REAL ESTATE

376 ACRE FARM, one 14-room house, one tenant house. Barns and other out buildings, ideal for horse farm.

2-FAMILY APT. in town. Close to schools and shopping.

LAKE PRIVILEGE LOT, Lake Columbia, Jackson county.

YEAR-ROUND, LAKE HOMES and Cottages.

## Metty Real Estate

105 N. Main, Chelsea 475-2200

JIM WILLIAMS, 475-8380 Member M.L.S. Ypsi Board of Realtors

Need listings on all types of properties. x46

## REFUSE BAGS

WE ARE NOW selling plastic garbage bags for \$25.00 a hundred, which includes price of service and bags. These may be purchased at the Village Office. These bags may be used for any extra garbage over the two 20-gal. can limit.

## D & S Refuse Service

NEED RAILROAD TIES? Try 2"x6" rough-cut redwood timbers. 8 to 20 ft. lengths. 46¢ per ft. at Chelsea Lumber Co. x49

## WANT ADS

R & H TREE EXPERT—Trimming, cabling, nailing, take downs. Fully insured. Free estimates. 476-3541. x42

1968 CHEV NOVA 2-dr. 6-cyl. auto, \$1195. Devon Lincoln-Mercury, 2100 W. Stadium, Ann Arbor. Ph. 682-5555. x38tf

PLANT 18 ACRES of corn and keep crop. Ph. 475-5548. x48

Chelsea Glass & Custom Woodworking 140 W. Middle Chelsea, Mich. 475-2226 - 475-4311 x32tf

FOR SALE—Thoroughbred German Shepherd puppies. Phone 426-4805. x35tf

FOR SALE—18" TV, upright piano, chest, iron beds, hog feeder. Good prices. Call 475-5093. Saturday only. x48

REDUCE EXCESS FLUIDS with Fluidex \$1.69—Lose weight safely with Dex-A-Diet, \$1.98 at Chelsea Drug. x42

FOR SALE—Aluminum dock support assemblies and the annual agency of dock installation and they're always 10% off for cash at Chelsea Lumber! x52

HOROSCOPE CHARTS CAST—Natal and progressed. Phone 434-0710. Ypsi. x48

JUST ARRIVED! CLIMATIS STRAWBERRY PLANTS ASSORTED FLOWERING PERENNIALS

Chelsea Hardware

FOR SALE—Ford plow, 14", 3-point hitch. Also hay and oats. 475-7728. x47

WANTED—Used saxophone for 5th grader. Call 475-4601. x46

FOR SALE—Kitchen dinette, with 6 chairs and 2 leaves, excellent condition. Swivel rocker. Call after noon, 475-2805. x47

COUPLE with one child wishes 2-bedroom house or lower flat. Chelsea or Dexter area. Stove and refrigerator. 1-846-2748 collect. x46

PIONEER BRAND gives you unbeatable yields. Make this winter a big part of your corn acreage this year. See or call your Pioneer man, Honegger's, Inc., Chelsea. Phone 475-3611. x46

DON'T GAMBLE with your corn crop. Plant the "Pioneer" plant proven, big-yielding Pioneer brand hybrids for the most profitable corn crop you've ever raised. See or call your Pioneer man, Honegger's, Inc., Chelsea. Phone 475-3611. x46

FOR SALE—18 lots. Call any day except Saturday. Fred Ewald, 475-8866. x46

## WANT ADS

HIRE A VETERAN—Painting and roofing. Experienced, reliable, reasonable. Small jobs welcome. References. Free estimates. 971-5771 between 4 and 9 p.m. x48

## FRISINGER

HALF MOON LAKE—5-bedroom brick and frame year-round ranch home. Fireplace, excellent decoration, finished recreation room, located on 1 1/2 acres. Chelsea schools.

VILLAGE OF CHELSEA—3-bedroom, 1 1/2 baths, family room, 2 block to North Elementary school. Priced to sell at \$27,500.

10 ACRES—3-bedroom aluminum and frame home, barn, tool shed, 2-car garage, fenced orchard.

PINCKNEY—Remodeled brick Early American home, 3 bedrooms, 1 1/2 baths, dining room, family room.

HI-LAND LAKE—Lake-front home, year round, 2 1/2 bedrooms, family room, dining, el., built-in bar-b-q in family room. Priced to sell at \$37,900.

7 MILES SOUTHWEST of Chelsea—26 acres, 4-bedroom remodeled farm home. Would make excellent horse farm.

15 ACRES—Immaculate brick 3-bedroom ranch home located on hilltop setting.

10-ACRE BUILDING SITES, located 15 minutes west of Ann Arbor. Dexter schools. Terms available.

Best Buys in Power Equipment

—SIMPLICITY —LAWN BOY —McCULLOCH

We Service What We Sell. Chelsea Hardware

## WANT ADS

REFRIGERATORS for sale. 7998 6th St., Dexter. 426-8314. x47

## LAWN and GARDEN NEEDS

—FERTILIZER —SEED —PRUNING PAINT —POTTING SOIL —PEAT MOSS —INSECTICIDES —SPRAYS —HAND TOOLS —ROSE GROWER SUPPLIES

Now is the time to most effectively apply dandelion killer. We recommend Scott's Turfbuilder Plus 2 or Turfbuilder Plus 4.

Chelsea Hardware

THORNTON 475-8857

7 ROOMS—Completely renovated 3 bedroom home in Village. Many built-ins in kitchen, carpeting. A nice home for \$31,900.

WOODED—2 acres, 4 bedrooms. family room, 2 fireplaces, a beautiful setting. Owner anxious.

LARGE KITCHEN—3 bedrooms, formal dining room, 1 1/2 baths on fenced lot near high school. \$28,500.

4 BEDROOMS—Play or study area for the children, family room with fireplace, walkout basement, 2 baths, close to high school and middle school. \$31,900.

TWO FAMILY—Two, one bedroom apartments, large lot, good location. Could be a money maker. \$24,900.

4 BEDROOMS—2 baths, nice yard, good location. Close to elementary school. \$27,500.

LARGE BEDROOMS—A gracious older home with fireplace, sun porch and formal dining room, a 3-car garage. A truly quality home.

BUILDING SITES: one, 2, 3, 5, 10, 35, and 40 acre parcels.

Robert H. THORNTON Realtor

Eves: Bob Riemenschneider 475-4121 Helen Lancaster 475-1198 John Pierson 475-2064 Robert Thornton 475-8857 x46

FOR RENT—2-bedroom furnished upstairs apt. in country. \$125 per month. No pets. One child accepted. Phone 426-3758. x46

FOR SALE—70 Buick 2-door. Ph. 475-7694. x46

FOR RENT—Farm house and 160 acres, 11380 Roepke Rd., north of M-52 near Chelsea. Owner at house Sunday from 12-3:00 p.m. Phone Detroit 342-0001. x46

TRAVEL TRAILER—18' Layton Reese hitch, spare tire, mirrors, lots of extras. 128 E. Summit, Chelsea. x46

FOR RENT—3-bedroom with 2-car garage, 5 miles from Chelsea. 475-2471. x46

FOR SALE—Half-ton Ford pickup truck, 1965 model. Body, fair condition, engine and interior, good. 32,000 miles. Call 426-4263 after 4 p.m. x46

WOMAN NEEDED for housekeeping, 2 or 3 days a week. 2 in family. Prepare 1 meal. 13724 Edgewater Dr., Half Moon Lake. Ph. 475-2753. x46

## WANT ADS

FOR SALE—1968 Mobile home, 10'x38'. Completely carpeted, partly furnished. Call 475-7654 or 475-8778. x46

## Howell Town & Country, Inc.

OLDER 4-BEDROOM farm house, in need of repairs, with 10 rolling acres, with fruit trees, black walnut trees, detached garage, other outbuildings. Land contract available.

16 VACANT LOTS at Half Moon Lake. Rolling and wooded with lake privileges. VL 9895.

5-ACRE PARCEL near Gregory. Wooded, black-top road. Land contract available.

2-BEDROOM HOME with privileges to Portage Lake. Pinckney School District. 2-car garage. LIP 9855.

LAKE-FRONT, 2-bedroom, year around. Enclosed porch for extra sleeping. 50 ft. on water. \$20,750. ALH 9928.

240 ACRES, 180 acres tillable, slightly rolling, well fenced, 2 country homes, 3 silos, many out buildings LF 9818.

## Howell Town & Country, Inc.

CARLIE WIEDMAN Local Representative Phone 878-3177 426-3758 evenings. x46

FOR SALE—Antique love seat. Ph. 475-2933. x46

GARAGE SALE—Three families. Furniture, clothes, antiques, miscellaneous. Friday and Saturday. 125 E. Middle. x46

LOST—Black and tan Airedale puppy, Wednesday afternoon, vicinity of Buchanan and Main Sts. Please call 475-7245. x46

YOUNG COUPLE with one child wishes to rent 2-bedroom apartment or house in Chelsea area. References. Call 682-2316. x46

CONVALESCENT and nursing care for elderly lady by licensed practical nurse in country home. Excellent care and food. DeSmith Nursing Home, 475-2859. x47

FOR RENT—2-bedroom country home. Security deposit and references. (517) 851-8741. x46

GARAGE SALE—Saturday, May 6 and Sunday, May 7, from 9 a.m. to 3 p.m. 680 Flanders. x46

WANTED—2-bedroom downstairs flat or 2-bedroom house. Will accept 3 bedrooms. Call 973-0673 or 475-1285. x47

WANTED TO RENT with option to buy—3- to 5-bedroom, modern home. 3 bedrooms on ground floor. Must have large lot and quiet surroundings. Stockbridge area. Range \$25-40,000. Write location, rent and total price option. H. T. Haynes, P.O. Box 34, Hillman, Mich. 49746. x46

FOR SALE—Used freezer. Sears chest type. Phone 475-7937 after 4 p.m. x46

NEW 55-gal. oil drums \$3 each. Sprague Buick-Olds, 1500 S. Main St., Chelsea. x46

FOR SALE—LeBlanc clarinet, in good condition. \$125. Call Mrs. Mann, 475-1208. x46

FOR SALE—1964 Valiant station wagon, 2 refrigerators, gas heater, and showcase 421 McKinley St. x47

GARAGE SALE—Friday and Saturday, May 5-6, 9 a.m. to 3 p.m. 514 Arthur. x46

FOR SALE—14' aluminum boat. \$125. 7 1/2 hp Johnson motor. \$55. Ph. 475-2889. x46

WANTED—Good home for three-year-old Beagle. Frcc. 668-8837. x47

BABYSITTER WANTED to live in. For 2 school-age children. Call 475-8196 or 488-2618. x44tf

## WANT ADS

FOR SALE—Inlaid vinyl and linoleum. Also tile. Armstrong and Congoleum. Natin. Installed by skilled craftsmen. Estimates, terms. Merkel Bros. 475-8021. x32tf

COMPLETE BOOKKEEPING SERVICES. Pick-up and delivery. Ph. 428-8131 days, 428-7243 evenings. x46

TRENCHING—4" to 16" wide, 0' to 6' depth, footings, drain lines, water and electrical lines. Will install. Ph. 475-7611. x51

WANTED—3-cushion porch glider. Ph. 428-4601. x47

LAWN WORK WANTED—Light hauling. High school boy. 475-2442. x46

SCENIC TRAIL RIDES—Sharor Hills Ranch. Call noon or evenings. 428-9482. x49

XEROX COPIES made. Merke Brothers. x41tf

CARD OF THANKS I would like to thank everyone for the cards, flowers and prayers while I was in the hospital and since my return home. Ellis C. Boyce.

## THANK YOU

I would like to express my deep appreciation to my Pastor, friends, relatives and all the organizations who remembered me with cards, plants, visits and gifts while I was in the hospital and since my return home. Duane Rowe.

THANK YOU I would like to thank everyone for the cards and visits while I was in the Chelsea Hospital and since I've returned home. Also Dr. Fisher and the man we did not know who helped Irene when I passed out. Also the Limaners for the nice box of fruit that Nina Wahl brought me when I came home. Ann all the nurses and staff of the Chelsea Community Hospital. Thanks to all. Mrs. Fred (Edith) Kennedy.

THANK YOU Many thanks to everyone for the cards, visits and gifts while I was in St. Joseph Mercy Hospital, Chelsea Medical Center, and since my return home. John O'Connor.

## TODAY'S THOUGHT

By LOUIS BURGHARDT

More people than ever before face early retirement. Apart from money matters, lots of people are concerned with how the retirement years will be spent and what they will do. Some simple arithmetic might be well to keep in mind. If one sleeps 8 hours, 16 useful hours remain 365 days in the year—total of 5,940 hours per year!

To fill the time, some people will find other jobs. Some will enjoy their hobbies or travel, doing the things they want to do, bypassing things they don't want to do. Some will leisurely sit around, try to relax and just plain loaf.

No matter what is done, retirement is a beautiful time for "self-renewal." Self renewal means self motivation to help yourself by helping others. With life expectancy far beyond former years, 5,000 or more hours per year for twenty, twenty-five or more years gives one a lot of wonderful hours for self renewal. BURGHARDT FUNERAL HOME, 214 East Middle St., Chelsea, Mich. Phone 475-4141.

## SPECIALS

NO. 303 CAN DEL MONTE CREAM OR WHOLE KERNEL Corn . . . . . 2 for 37c

ECKRICH ALL-MEAT Hot Dogs . . . 1-lb. pkg. 69c

NO. 2 1/2 CAN DEL MONTE SLICED OR HALVES Peaches . . . . . 2 for 69c

100-COUNT PKG. Paper Plates . . . . . 47c

NO. 303 CAN DEL MONTE Friut Cocktail . . 2 for 55c

Bulk and Package Garden Seeds White and Yellow Onion Plants and Sets.

## KUSTERER'S FOOD MARKET

DIAL 475-2721 WE DELIVER

## BANK AUTO LOANS ARE BEST!

ANY TRIP YOU MAKE will be more pleasant, if the car you drive is financed the Bank Way—economically, conveniently and with local people.

## CHELSEA STATE BANK

Member Federal Reserve System FDIC Member Federal Deposit Insurance Corp.

Member Federal Reserve System FDIC Member Federal Deposit Insurance Corp.

Member Federal Reserve System FDIC Member Federal Deposit Insurance Corp.

Member Federal Reserve System FDIC Member Federal Deposit Insurance Corp.

Member Federal Reserve System FDIC Member Federal Deposit Insurance Corp.

Member Federal Reserve System FDIC Member Federal Deposit Insurance Corp.

Member Federal Reserve System FDIC Member Federal Deposit Insurance Corp.

Member Federal Reserve System FDIC Member Federal Deposit Insurance Corp.

Member Federal Reserve System FDIC Member Federal Deposit Insurance Corp.

Member Federal Reserve System FDIC Member Federal Deposit Insurance Corp.

Member Federal Reserve System FDIC Member Federal Deposit Insurance Corp.

Member Federal Reserve System FDIC Member Federal Deposit Insurance Corp.

Member Federal Reserve System FDIC Member Federal Deposit Insurance Corp.

Member Federal Reserve System FDIC Member Federal Deposit Insurance Corp.

Member Federal Reserve System FDIC Member Federal Deposit Insurance Corp.

Member Federal Reserve System FDIC Member Federal Deposit Insurance Corp.

# This coupon is worth 50 gallons of gasoline.

## Maybe even your life!

How are your tires? Government safety studies show that dangerously worn tires are 10 times more likely to have a flat than new tires.

So take this coupon to your nearby American Oil Dealer. Negotiate a deal with him. Get his best price. And on top of that, we'll give you 50 free gallons of gasoline with the purchase of four new Atlas passenger tires. Or 25 free gallons with the purchase of two. You know they've got to be good — because when you buy a tire from us, we both live with it.



All tires must be sold by June 30, so we at Fred's Standard Service are going to sell you the first tire at full price and the second for HALF PRICE! Shop around first, then come and compare our prices!

OFFER GOOD ONLY AT

# FRED'S STANDARD SERVICE

889 South Main St., Chelsea

Phone Chelsea 475-2804

## HOUSEHOLD AUCTION

The following described household and furniture will be sold at Public Auction located at 452 North St., village of Chelsea, sale site located west of Chelsea Milling Co.

12:30 p.m. Sat., May 6 12:30 p.m.

Phone Stockbridge 517 851-8042 PRICE BROTHERS Auctioneers Phone Stockbridge 517 851-8042

## HOUSEHOLD FURNITURE - ETC.

3 complete beds. Davenport. Chest of Drawers. Swivel chair. 2 refrigerators. Swivel rocker. 3-pc. sectional suite. School desk. Floor lamps. Electric stove. 2 kitchen tables and chairs. 3 old sewing machines. Table lamps. Baby bed. End tables. 10-gal. milk cans. Combination stereo-TV. 2 vacuum cleaners. Blankets. Punch bowl set. Bedspreads. Radios. Clocks. Quatity pictures. Dishes. Silverware. Figurines. Cooking utensils. Wall plaques. Salt & pepper shakers. Small electrical appliances. Large amount of miscellaneous items to be sold. 2-wheel trailer. Roto-tiller. Riding lawn mower. Rotary lawn mower. Other items to be sold.

TERMS: Cash or Check Not Responsible for Accidents

Mr. and Mrs. Donald Rowe OWNERS



## Community Calendar

Kinder Klub, Tuesday, May 9, 8 p.m. at the home of Mrs. Dan Ewald.

Chelsea Co-operative Nursery now accepting applications for afternoon non-assist group only. Phone Shari Roberts, 475-7522 or 475-8904.

ACSLD general meeting Thursday, May 4. Sue Whitney, an associate of Mrs. Dan's, will talk about Mrs. Dan's successful tutoring technique. For information phone 761-8182.

VFW Auxiliary, regular business meeting Monday, May 8, 8 p.m. in the Rebecca Hall.

Modern Mothers, Monday, May 8, 8 p.m. at the home of Mrs. Don Kvarnberg.

Ann Arbor Women's City Club will hold its fourth Antiques Show and Sale May 18, 19 and 20 in the clubhouse at 1830 Washtenaw Ave., Ann Arbor. Show times will be from noon to 10 p.m. Thursday and Friday and 12 to 6 p.m. Saturday.

Willow Creek Women's Tuesday Golf League meeting May 6, 2 p.m. at Willow Creek Golf Course, Stockbridge. Join, \$5 membership fee and green fees \$1.25 only on Tuesday. Anyone wishing to join but unable to attend contact Carol Kuzon, (517) 851-4388, adv46

Chelsea Social Service, second floor of the Municipal Building, is open each Tuesday and Thursday afternoon from 2 p.m. to 5 p.m. to assist persons with problems, either through counseling, or referral to other agencies, when indicated. Limited financial help may be given. The office also maintains a clothing depot for new and used clothing and bedding which is given without charge.

LaLeche League, Thursday, May 4, 8 p.m. at the home of Pam Beatrice, 1516 Montclair, Ann Arbor. Joanne Hee, group leader.

Webster United Church of Christ will hold a Flea Market Saturday, May 6, from 10 a.m. to 4 p.m. and Sunday, May 7, from 12 to 4 p.m. at the Webster Community hall. Antiques, bake goods, white elephants, linens, jewelry, books, records, clothing, furniture and many other items. xadv46

Vacation Bible school begins at the First Congregational United Church of Christ June 12-16. Registration fee \$1 per child, not over \$5 per family. Any child welcome. Pre-school - 6th grade. For registration call 475-2705. adv47

Regular meeting of Herbert J. McKune Post No. 31, Thursday, May 4, at 8 p.m., at the Legion Home. Election of new officers for the 1972-73 year. Installation will be held June 1.

Lima Center Study Group, Wednesday, May 10, 10:30 a.m. at the home of Mrs. Jack Bradbury, 8910 Easton Rd. Lesson: "Soul Food."

Limaneers, home of Mrs. Alfred Lindauer, Thursday, May 4, 12:30 p.m.

Cub Scout Pack 415 committee meeting Thursday, May 4, at the home of Yvonne Adkins, at 8 p.m.

American Legion and Auxiliary hospital equipment available by contacting Don O'Dell at 475-8249. Inquiries regarding the Chelsea blood bank may be directed to Harold Jones in the event that Mrs. Dudley Holmes is unavailable, or to Mrs. Pauline McKenna, American Red Cross in Ann Arbor, 971-5300.

Pap tests are free for all area women, Tuesday mornings, at St. Joseph Mercy Hospital, Ann Arbor. Call American Cancer Society office, 668-8857, for appointment.

Washtenaw County Senior Men's Golf Association will open the 1972 season Monday, May 8 at Huron Hills. Starting time will be 9 a.m. Open to all seniors of Washtenaw county.

Chelsea Rebekah Lodge No. 130 has postponed their family potluck supper from May 9 to June 13. Members note change of date.

Chelsea Community Farm Bureau, May 11, 8 p.m., Sylvan Town hall. Hosts: Clifford Heydlauff and Alma Kalmbach.

### Carole Sharrard Teaching School In South America

A former resident of the Chelsea area, Carole Sharrard, daughter of Dr. and Mrs. P.E. Sharrard of Plainwell, left April 27 to teach first grade at the Columbus School, Apartado Aereo 5225, Medellin, Columbia, South America. The school is run jointly by Americans and Columbians and has an enrollment of approximately 900 students in grades K-12. Miss Sharrard is a 1968 graduate of Plainwell High school and a December 1971 graduate of Western Michigan University. She holds a BA degree in education.

## Questions-Answers on School Millage Requests

Q. Where can I vote?  
A. Voting will take place in the large group instruction room in the Dwight E. Beach Middle School from 7 a.m. to 8 p.m., May 8.

**PROPOSITION II**  
**One Mill for Capital Outlay**  
Q. What is capital outlay?  
A. Capital outlay includes material items that are either additions to or replacement of material items already owned by the school district. Their purpose is to improve the equipment for teaching, or for improvements for the buildings and grounds.

Q. What capital outlay items are included in this request?  
A. Paving  
High School lot .....\$10,000  
Elementary lots .....11,240  
Lighting (All Schools) .....4,000  
Bleachers .....10,000  
Fence .....15,000  
(H.S. Athletic Field)  
Drapes .....10,000  
Band instruments .....6,000  
Chorus Risers .....2,000  
A-V Equipment .....3,000  
Typewriters .....4,000  
Mower .....4,500  
P.E. Equipment  
Secondary .....3,000  
Elementary .....2,000  
Furniture (Elementary) .....3,000  
Acoustical Work .....2,000  
Beach Vocal Music and Band Rooms

Q. Will one mill purchase all the items listed?  
A. No. One mill, on 100 percent collection, is equal to approximately \$68,000 on the 1972-73 estimated state equalized valuation. Therefore, the board would have to select items from this list.

Q. Will this mill be an increase for next year?  
A. Yes. This mill will be an addition to the millage requested in Proposition I. However, the total millage, including this mill, will be less than the millage levied in 1969-70.

Q. How much will my taxes be increased by the passage of Proposition II?  
A. The increase will be \$1 for each \$1,000 of State Equalized Valuation. Property assessed at \$12,000 would pay \$12 for this capital outlay proposition.

Q. How will Proposition II be worded on the ballot?  
A. Shall the limitation on the total amount of taxes which may be assessed against all property in Chelsea School District, Washtenaw and Jackson Counties, Michigan, be increased by one mill on each dollar (\$1 on each \$1,000) of the assessed valuation as equalized, of all property in said school district for a period of two (2) years, 1972 and 1973, for the purpose of providing a additional operating funds to be used to purchase necessary equipment and supplies and to repair school buildings and develop school sites?

**PROPOSITION III and PROPOSITION IV**  
Proposition III and Proposition IV are companion propositions. Number three requests permission to increase the levy by one mill and number four requests permission to levy the one mill. Both of these ballots must be approved to levy the one mill for the building and site fund.

The board of education is faced with a building program. Facilities to house the students must be built in the near future. The estimated increase in enrollment for next year is 130 students. All rooms in all the schools will be filled in 1972-73 and increased enrollments are anticipated for the following years.  
A mill levy for each of the next three years will provide the board of education with approximately \$200,000 for the purpose of acquiring land for schools and for the construction of classrooms.  
A building and site fund replaces bonding for the same amount of money. However, the electors would save the interest to pay off the bonds by establishing the building and site fund.

**PROPOSITION III and PROPOSITION IV**  
Proposition III and Proposition IV are companion propositions. Number three requests permission to increase the levy by one mill and number four requests permission to levy the one mill. Both of these ballots must be approved to levy the one mill for the building and site fund.

The board of education is faced with a building program. Facilities to house the students must be built in the near future. The estimated increase in enrollment for next year is 130 students. All rooms in all the schools will be filled in 1972-73 and increased enrollments are anticipated for the following years.  
A mill levy for each of the next three years will provide the board of education with approximately \$200,000 for the purpose of acquiring land for schools and for the construction of classrooms.  
A building and site fund replaces bonding for the same amount of money. However, the electors would save the interest to pay off the bonds by establishing the building and site fund.

The board of education is faced with a building program. Facilities to house the students must be built in the near future. The estimated increase in enrollment for next year is 130 students. All rooms in all the schools will be filled in 1972-73 and increased enrollments are anticipated for the following years.  
A mill levy for each of the next three years will provide the board of education with approximately \$200,000 for the purpose of acquiring land for schools and for the construction of classrooms.  
A building and site fund replaces bonding for the same amount of money. However, the electors would save the interest to pay off the bonds by establishing the building and site fund.

The board of education is faced with a building program. Facilities to house the students must be built in the near future. The estimated increase in enrollment for next year is 130 students. All rooms in all the schools will be filled in 1972-73 and increased enrollments are anticipated for the following years.  
A mill levy for each of the next three years will provide the board of education with approximately \$200,000 for the purpose of acquiring land for schools and for the construction of classrooms.  
A building and site fund replaces bonding for the same amount of money. However, the electors would save the interest to pay off the bonds by establishing the building and site fund.

The board of education is faced with a building program. Facilities to house the students must be built in the near future. The estimated increase in enrollment for next year is 130 students. All rooms in all the schools will be filled in 1972-73 and increased enrollments are anticipated for the following years.  
A mill levy for each of the next three years will provide the board of education with approximately \$200,000 for the purpose of acquiring land for schools and for the construction of classrooms.  
A building and site fund replaces bonding for the same amount of money. However, the electors would save the interest to pay off the bonds by establishing the building and site fund.

The board of education is faced with a building program. Facilities to house the students must be built in the near future. The estimated increase in enrollment for next year is 130 students. All rooms in all the schools will be filled in 1972-73 and increased enrollments are anticipated for the following years.  
A mill levy for each of the next three years will provide the board of education with approximately \$200,000 for the purpose of acquiring land for schools and for the construction of classrooms.  
A building and site fund replaces bonding for the same amount of money. However, the electors would save the interest to pay off the bonds by establishing the building and site fund.

The board of education is faced with a building program. Facilities to house the students must be built in the near future. The estimated increase in enrollment for next year is 130 students. All rooms in all the schools will be filled in 1972-73 and increased enrollments are anticipated for the following years.  
A mill levy for each of the next three years will provide the board of education with approximately \$200,000 for the purpose of acquiring land for schools and for the construction of classrooms.  
A building and site fund replaces bonding for the same amount of money. However, the electors would save the interest to pay off the bonds by establishing the building and site fund.

The board of education is faced with a building program. Facilities to house the students must be built in the near future. The estimated increase in enrollment for next year is 130 students. All rooms in all the schools will be filled in 1972-73 and increased enrollments are anticipated for the following years.  
A mill levy for each of the next three years will provide the board of education with approximately \$200,000 for the purpose of acquiring land for schools and for the construction of classrooms.  
A building and site fund replaces bonding for the same amount of money. However, the electors would save the interest to pay off the bonds by establishing the building and site fund.

The board of education is faced with a building program. Facilities to house the students must be built in the near future. The estimated increase in enrollment for next year is 130 students. All rooms in all the schools will be filled in 1972-73 and increased enrollments are anticipated for the following years.  
A mill levy for each of the next three years will provide the board of education with approximately \$200,000 for the purpose of acquiring land for schools and for the construction of classrooms.  
A building and site fund replaces bonding for the same amount of money. However, the electors would save the interest to pay off the bonds by establishing the building and site fund.

**PROPOSITION III and PROPOSITION IV**  
Proposition III and Proposition IV are companion propositions. Number three requests permission to increase the levy by one mill and number four requests permission to levy the one mill. Both of these ballots must be approved to levy the one mill for the building and site fund.

The board of education is faced with a building program. Facilities to house the students must be built in the near future. The estimated increase in enrollment for next year is 130 students. All rooms in all the schools will be filled in 1972-73 and increased enrollments are anticipated for the following years.  
A mill levy for each of the next three years will provide the board of education with approximately \$200,000 for the purpose of acquiring land for schools and for the construction of classrooms.  
A building and site fund replaces bonding for the same amount of money. However, the electors would save the interest to pay off the bonds by establishing the building and site fund.

The board of education is faced with a building program. Facilities to house the students must be built in the near future. The estimated increase in enrollment for next year is 130 students. All rooms in all the schools will be filled in 1972-73 and increased enrollments are anticipated for the following years.  
A mill levy for each of the next three years will provide the board of education with approximately \$200,000 for the purpose of acquiring land for schools and for the construction of classrooms.  
A building and site fund replaces bonding for the same amount of money. However, the electors would save the interest to pay off the bonds by establishing the building and site fund.

## Track Team Finishes 6th in Albion Relays

Chelsea High school track team finished sixth out of a field of 13 Class B schools in the invitational Albion Relays Saturday, April 29. This was a disappointing day for the defending champions as they placed in only six events and saw arch-rival Saline win the fourth division with 38 points.

The Bulldogs came up with 16 points with their best performance of the morning being a 4:39 second-place finish by Dave Buxton in the mile. Randy Seitz took a third in the shot put with a 47'6" effort and Tim Lancaster also claimed a third in the pole vault with 11'6". Roger Pritch took a fourth in the high jump with a 5'10" jump.

The 800 and mile relay teams both finished fourth with times of 1:38.8 and 3:43.1, respectively. Carl Gauss, Marty Cashdollar, Craig Gault, and Lee Ferguson ran in the half mile event with Ferguson, Cashdollar, Jeff Marshall, and Dave Buxton competing in the mile relay.

**CHELSEA FINANCE CORP.**  
\$25 to \$1,500  
For Any Worthwhile Purpose  
See or Call  
**FRANK HILL**  
at 475-8631  
111 PARK STREET  
CHELSEA, MICH.

**Personal Notes**  
Mrs. Carol (Nellie) Pierce of Langsville, Ohio is spending several weeks visiting at the home of her parents Mr. and Mrs. Frank E. Abdon, 447 Railroad St.



**LAKERS - RELIEF IS HERE!**  
THIS YEAR MAKE THE MOVE TO  
**ALUMISPAN DOCK SUPPORTS**  
EZY-IN, EZY-OUT, PERMANENT.

A Normal 42-ft., 3-Section Dock Takes  
**1 - 36" ASSEMBLY**  
(2 Legs, 2 Bottom Plates, 1 Cross Arm, 2 Brackets)  
**2 - 48" ASSEMBLIES**  
**TOTAL PRICE \$76<sup>39</sup>** CASH - N. CARRY  
COMPLETE WITH RUST-PROOF BOLTS

IF YOU'RE BUILDING A COMPLETE NEW DOCK:  
We'll Pre-Cut the Dockboards to Your Specs  
NO EXTRA CHARGE!

**CHELSEA LUMBER**  
"THE FRIENDLY ONE"

**CHELSEA LUMBER**  
"THE FRIENDLY ONE"

## BIRTHS

A daughter, Sarah Marie, April 29, at Women's Hospital, Ann Arbor to Mr. and Mrs. James R. Grau, 737 S. Main. Maternal grandparents are Dr. and Mrs. Max Duffee, Ann Arbor. Paternal grandparents are Mrs. Irma Grau of Chelsea. A great grandmother, Mrs. Lydia Zahn, is also from Chelsea.

A son, Jeffrey Thomas, to Mr. and Mrs. Thomas A. Bishop of 8882 Rush Lake Dr., Pinckney. Maternal grandparents are Mr. and Mrs. Norwood Bush of 19310 Old US-12, Chelsea; paternal grandparents are Mr. and Mrs. Frank Auxier of 642 Hamburg Rd., Pinckney.

A daughter, Roxanne Renae, Thursday, April 27 at St. Joseph Mercy Hospital, Ann Arbor, to Mr. and Mrs. William Kuschmaul, 409 East St. Paternal grandparents are Mr. and Mrs. Robert Kuschmaul, 1451 Guenther Rd. Maternal grandparents are Mr. and Mrs. Harry Kealy, 1214 Kernwood Dr.

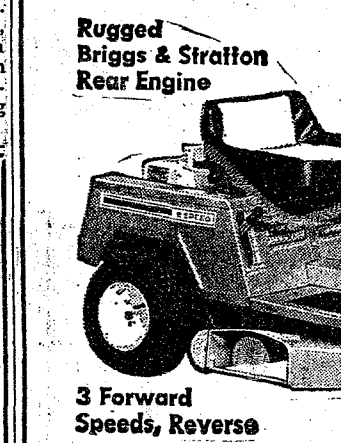
## Memorial Day Services Planned

Plans are underway for the annual Memorial Day observance, including a parade through the Village and a memorial ceremony at the cemetery. Donald O'Dell will act as parade master this year with William Schrader as officer of the day, Ray Lutovsky, master of ceremonies, and Dr. Gorton Riethmiller speaking at the cemetery. The parade is scheduled to begin at 10 a.m. and will include the Chelsea Senior and Junior High school bands.

Telephone Your Club News To GR 5-3581.

**GAMBLES**  
LAWN & GARDEN CENTER  
GREAT RIDER BUY!

Rugged Briggs & Stratton Rear Engine



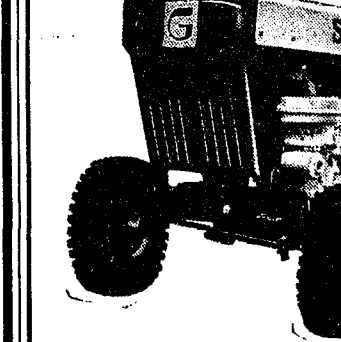
3 Forward Speeds, Reverse  
5-HP, 25-Inch 'Greenkeeper' Riding Rotary Mower

Use Our Budget Payment Plan  
**\$299<sup>00</sup>**

Golf cart style—mows your lawn golf-course smooth! 1 lever adjusts cutting height. Blade clutch. Chain drive with differential and clutch-brake pedal. Easy recoil-starting Briggs & Stratton engine at rear for traction, visibility! 36-3678

**COMPACT! Priced Low!**

4 Forward Speeds and Reverse



8-HP, 30-Inch 'Superide' Twin Blade Rotary Mower

Use Our Budget Payment Plan  
**\$449<sup>00</sup>**

'Easy tractor-style handling at this low price! Differential slows inside wheel on turns, resists scuffing lawn. 30" twin blade floating deck has 1-lever height adjustment. Clutch/brake pedal. Recoil-starting Briggs & Stratton engine. 36-3678

**COMPLETE LINE LAWN & GARDEN NEEDS**

## Golf Team's Perfect Season On Line Friday

Chelsea High school golf team will travel to Dexter, Friday, May 5 to lay their perfect 5-0 conference record on the line against their toughest competition in the league, Dexter and Saline.

Thus far they have suffered only one defeat, against Dundee, in a practice match, and stand 8-1 overall on the season.

The squad defeated Jackson in a non-league encounter Thursday, April 27 by a score of 171-185 before losing to Dundee, 185-192, in a triangular match with Tecumseh, Monday, May 1. The Bulldogs had no trouble with Tecumseh, outshooting them by eight strokes. In league play, Chelsea downed Novi, 175-185, Friday, April 28. The squad was paced by Mark Policht's 42, Dave Powers' 43, and 45's by Glen Musolf and Jeff Schmidt. A Novi team member, Less Branch, was medalist for the day's competition with a blistering 37.

In another triangular league match Tuesday, May 2, Chelsea easily outshot Milan and South Lyon with a combined team card of 188. The two visiting teams evidently found the going tough on Chelsea's home course, the Inverness Country Club, as the Milan team shot 185 and South Lyon 188. Mark Policht again led the field with a 39 for the afternoon's round while Dave Powers shot a 40, Glen Musolf 43, Don Konkli and Jeff Schmidt 46's and Ken Kusterer 49.

Cost per circuit year in communications satellites has decreased from \$25,000 for a 1965 Easly Bird circuit to about \$870 for today's Intelstat IV.

## Tennis Becomes CHS Varsity Sport

This spring marks the first year of varsity competition for the Chelsea High tennis team. They have previously participated only as a school-sanctioned club. Though they have started off slowly with two losses, hopefully things will get better as they swing into the middle of their schedule.

An opening loss April 18 to Stockbridge, 4-3, showed Coach Sam Vogel some promise as Mike Hergert won first singles, Ron Adams and Ed Koenigter won second doubles and Dave Hess and Mark Grambau won third doubles. The next outing, April 26, saw the team defeated, 5-1, at the hands of Haslett, with only the team of Lynn Houle and Bob Rutherford victorious in first doubles.

The next test for the fledgling team will be against Stockbridge again on Tuesday, May 2.

This year's team is comprised of seniors Mike Hergert, Bob Rutherford, Tom Hubert, Lynn Houle, Ed Koenigter, Doug Vandorder, a n d Dave Hess; juniors Ron Adams and Mark Grambau; sophomores Jim Storey and Jane Belser; and freshman Debbie Bertke.

The coeds will be competing in open competition with the rest of the teams.

## New Schedule In Effect for Mail Dispatch

Postmaster Richard Schaules is notifying customers, effective May 1, a new in-coming and out-going mail schedule went into effect at the Chelsea Post Office.

The last out-going dispatch of the mail daily, except Sundays, is set at 5 p.m. instead of the present 6 p.m. The 11:30 a.m. dispatch has been eliminated completely.

Postmaster Schaules urges that all customers and firm mailers who mail later in the day, have their mail brought to the post office in sufficient time before the 5 p.m. deadline.

Schaules also states that new daily office hours are necessary in order to adjust to the schedule changes.

Post office windows will be open the usual 8:30 a.m. to 5 p.m. Monday through Friday and 8:30 a.m. to 12 p.m. on Saturdays, but the post office lobby will not be open until 6:30 a.m. and will close 5:30 p.m. Monday through Saturday. These changes are all in alliance with the new Area Mail Processing innovation, with the main objective of better mail service for postal customers.

**CHELSEA HARDWARE**  
110 S. Main St. Chelsea  
Phone 475-1121

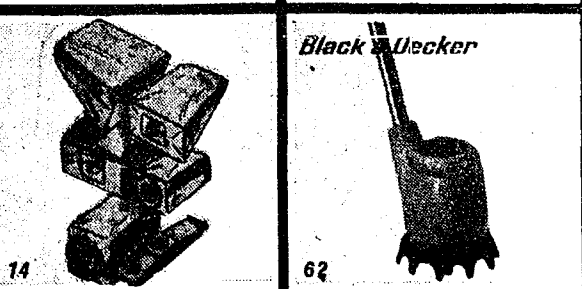
## SPRING SALE of GUARANTEED SPECTACULARS



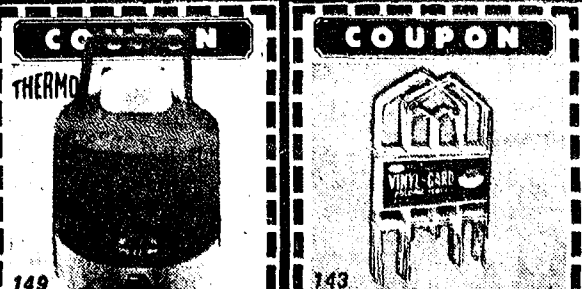
9" ROLLER KIT 88¢  
16' POWER TAPE \$4.39



50'-VINYL HOSE \$1.99  
20-GAL. TRASH CAN \$4.99



VACUUM CLEANER \$47<sup>00</sup>  
GRASS TRIMMER \$12<sup>88</sup>



1-GAL. PICNIC JUG \$1.99  
VINYL FOLDING FENCE \$1.17

LIMIT 1 WITH COUPON

## VAN HEUSEN Vanknit

The new knit dress shirt that everyone is talking about today! Van Heusen Vanknit is designed for the man who demands total fashion with total comfort. Bold dynamic prints that machine wash and dry, with a fit that drapes without a wrinkle. Mini-jacquard with stylish long-point Brooke collar in 75% Arnel® triacetate, 25% polyester. \$11.00 and up.

## STRIETER'S MEN'S WEAR

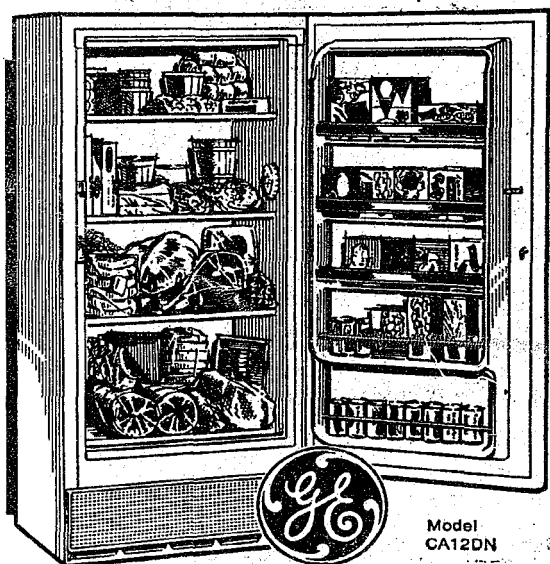
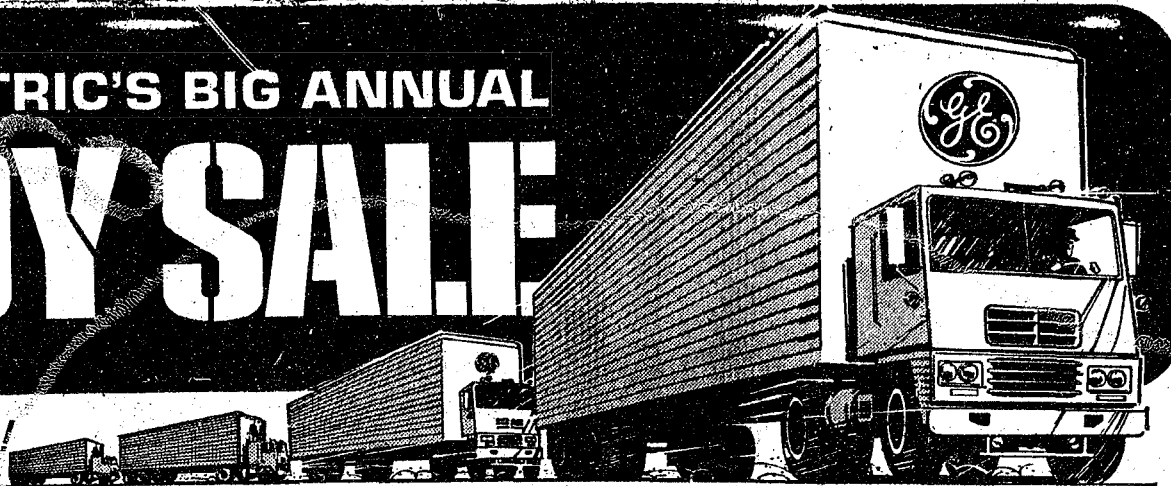
"The Place To Go for Brands You Know"





# GENERAL ELECTRIC'S BIG ANNUAL CONVOY SALE

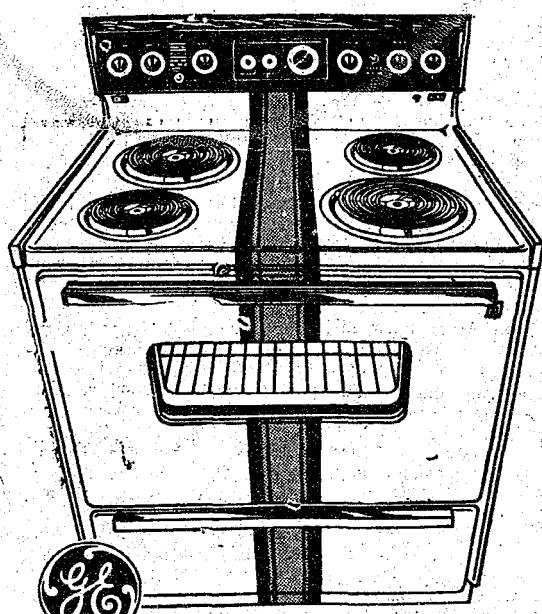
DIRECT-FROM-FACTORY SAVINGS!



## ECONOMY FOOD FREEZER for young families

- 11.6 cu. ft. model stores 406 lbs.
- Upright convenience — less bending, stooping
- 4 convenient door shelves, juice can storage shelf
- Adjustable temperature control
- Built-in lock

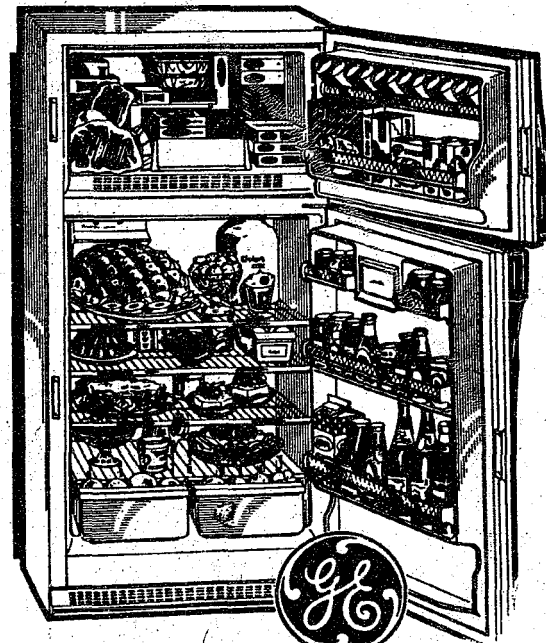
**\$189<sup>95</sup>**



## P7 Oven Cleans Itself Electrically

- 30" Total Clean™ oven range
- Picture window oven door
- Automatic clock, timer, minute timer
- Floodlighted oven, fluorescent illuminated cooktop
- Large storage drawer, two appliance outlets

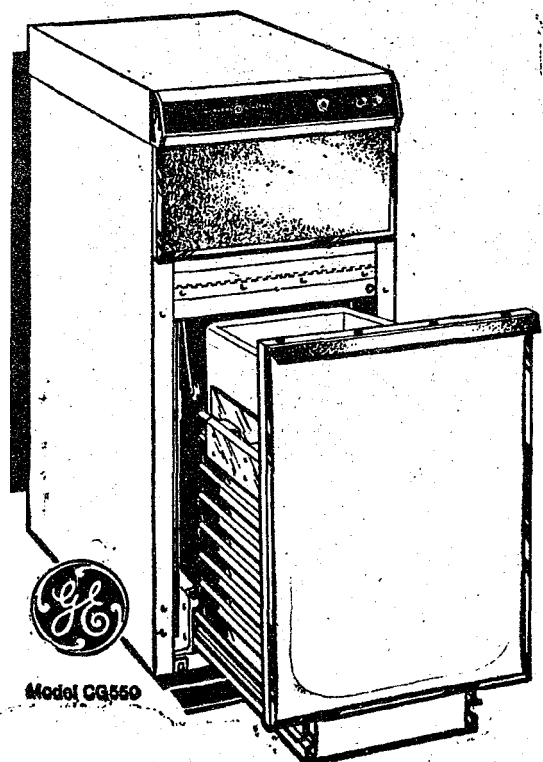
**\$339<sup>95</sup>**



## NO DEFROSTING EVER!

- 14.7 cu. ft. no-frost refrigerator-freezer
- Four cabinet shelves, twin vegetable bins
- Door shelves, butter compartment, removable egg bin
- Giant zero-degree freezer holds 148 lbs.
- Jet freeze ice compartment for fast freezing

**\$299<sup>95</sup>**



## PUSHBUTTON COMPACTOR with FREE, 3 month bag supply

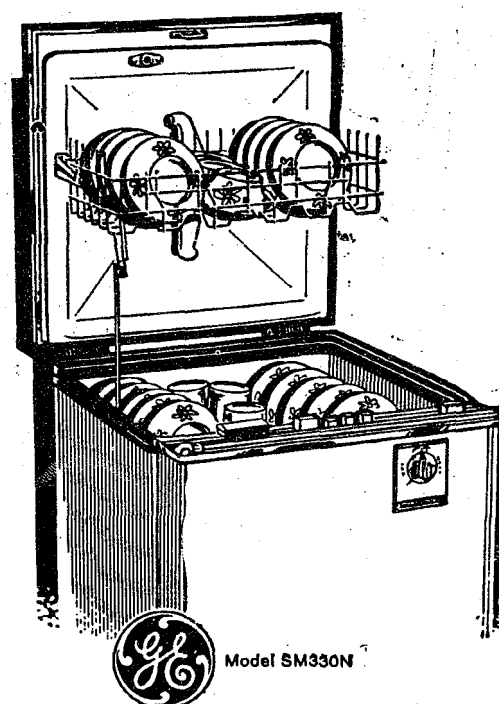
- Easy to operate — just push a button
- Compacts paper, cans, bottles, etc., to less than 1/4 original volume
- Free three month bag supply included
- Plugs into any adequately-wired 115 v. outlet
- Protective GE bag caddy makes bag handling easier



## BIG STORAGE for big families

- 20.8 cu. ft. no-frost refrigerator-freezer
- Rolls out on wheels for easy cleaning
- Twin vegetable bins, adjustable cabinet shelves
- Butter compartment, removable egg bin
- Separate temperature controls for each section

**\$369<sup>95</sup>**



## TIME SAVER — WORK SAVER

- 3 wash cycle dishwasher
- Special plate warmer setting
- Built-in soft food disposer
- Lift top racks for easy loading
- Faucet-flt uncouple connector

**\$179<sup>95</sup>**

# HEYDLAUFF'S

113 N. Main St., Chelsea

Phone 475-1221

## The Chelsea Standard

Second Section—Pages 7-14

CHELSEA, MICHIGAN, THURSDAY, MAY 4, 1972



**BAR BUCK AWARD:** J. Raymond Seitz accepted the award on behalf of Seitz's Tavern as the winner of the Cancer Drive's Bar Buck contest. The tavern collected \$118 during the month of April to win the plaque presented by Cancer Drive Chairman Loydell Keezer.

## Topical Fluoride Program Starts June 13 for 205 Children

Chelsea's 1972 Topical Fluoride Program will take place from June 13 through June 26 in the High School Cafeteria. Appointment cards have been sent and, if there are any conflicts in the scheduled dates or times, parents are to call Mrs. Gary Albrecht, chairman, by May 12. After that date no changes may be made in the schedule.

The program is completely filled and there are no available appointments according to Mrs. Albrecht. However, there will be a waiting list of children who may fill in if there are any last-minute cancellations. Interested parents may contact the chairman.

205 youngsters will be given the topical fluoride treatments this year, an 11 percent increase over last year. "People are becoming aware that the community fluoride program is one of the few remaining bargains in these days of high prices," commented Mrs. Albrecht. The dental program, under the direct supervision of the Michigan Board of Health, chooses a dental hygiene student on the basis of skill and knowledge. The Michigan Dental Law does not permit the operation of a topical fluoride program for profit. The fee charged (\$3.50) should be sufficient to operate the program on a self-supporting basis.

"The topical fluoride programs conducted in this state are an example of the co-operation between state agencies for the benefit of the public. The Board of Dentistry of the Michigan Department of Licensing and Regulations, the Michigan State Dental Association and the Dental Division of the Michigan Board of Health have joined forces so that thousands of children may benefit from the application of fluoride, greatly reducing dental decay in their teeth," stated the chairman.

Calorie counters take note — many meat cuts pack lots of flavor but provide only a modest number of calories. Suitable for your consideration among pork offerings are generous 3 1/2-ounce servings of pork loin (roast or chops), 207 to 250 calories; ham (baked or broiled slice or roast), 219; ten-derloin, 239 and blade steaks, 277. Beef, too, provides many low-calorie cuts, such as sirloin tip or rump roast, 185 to 235; sirloin steak, 208; flank steak, 235; round steak, 221 to 238; ground chuck, 263.

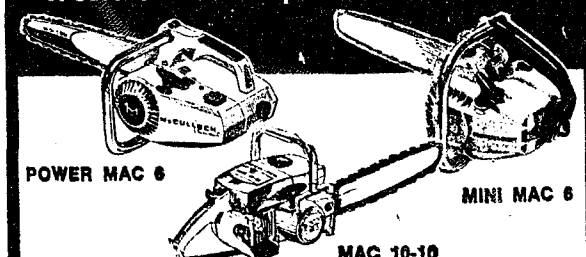
## Meet Your New McCULLOCH Chain Saw Dealer!

### CHELSEA HARDWARE

110 S. Main St.

Phone 475-1121

Your New Headquarters for the World's Most Popular Chain Saws!



Whether you need a chain saw for working the back yard or the back 40 acres, we can put new power in your hands — McCulloch Power — from the 6 1/2 lb. Mini Mac (world's lightweight) to the big-timber models.

### FACTORY AUTHORIZED SERVICE

Before qualifying for the coveted McCulloch Franchise, we had to prove our service to be the best. Now we're ready to prove it to you!

### GENUINE McCULLOCH CHAIN SAW PARTS

We now have a large stock of McCulloch parts, chains, bars, sprockets, oil and accessories for all popular McCulloch chain saw models.

\* Less cutting attachments

SAWS... SERVICE... PARTS... COME IN NOW AND SEE HOW McCULLOCH HELPS YOU CUT THE COST OF LIVING!



## CROSSWORD PUZZLE

**ACROSS**

1. Pain
5. Gather
10. Proceed briskly
11. Islands south of Sicily
12. Moonshine (2 wds.)
14. Make beloved
15. First mate
16. "Easy" ———

**DOWN**

1. Immediately (2 wds.)
2. Least refined
3. Whet- stones
4. Girl's name
5. Bardot's "friend"
6. Homo sapiens
7. Toothed-leaved tree

18. Actress, ———  
Martinelli

19. Cotton State (abbr.)

21. Secular

23. ———  
Got Six-  
pence"

25. Of St. Peter

27. Iran's ruler

32. Actress Marisa

33. Bring to bear

17. Approached  
20. French article  
21. Lie around  
22. Spanish aunt  
24. Weaken  
26. Passport endorsement  
28. "Crown Magnifique"  
31. Conversation  
34. Reminger  
35. Levy  
36. Stellar  
38. In one's decline:

25. Grew tasteless  
30. Bridge charge  
31. Accumulate

34. Additional  
37. Bondman  
39. Caddian Indian  
40. Thrice (comb. form)

	1	E	3	4		5	6	7	8	9
	10					11				
12					13					
14							14		15	
16						17	18	19		
20					21					
		22	23			24		25		
		26				27		28	29	30

31	32	33		
35			36	37
38		39	40	
41			42	
43			44	

**NOTICE**  
**Lyndon Township Residents**  
**Special Meeting with Road Commission**  
**SATURDAY, MAY 6 - 9 a.m.**

**at Lyndon Township Hall**  
**Corner North Territorial and Townhall Rds.**

Discussion on a road program, plus  
further discussion on township reassessment.

---

---

# **LAST DAY OF REGISTRATION**

**School Election**

---

**Notice of the Last Day of Registration  
of the Qualified Electors of  
Chelsea School District**

**WASHTENAW and JACKSON COUNTIES, MICHIGAN**

---

**TO THE QUALIFIED ELECTORS  
OF SAID SCHOOL DISTRICT:**

**Please Take Notice that the Annual Election of said School District will be held on**

**Monday, June 12, 1972**

---

The last day on which persons may register with the appropriate city or township clerks, in order to be eligible to vote at said Annual Election called to be held on Monday, June 12, 1972, is

**Friday, May 12, 1972**

Persons registering after 5:00 o'clock p.m., on the said Friday, May 12, 1972, are not eligible to vote at

Persons planning to register with the respective city or township clerks must ascertain the days and hours on which the clerks' offices are open for registration.

This Notice is given by order of the Board of Education of Chelsea School District, Washtenaw and Jackson Counties, Michigan.

Dated: May 4, 1972.

**MRS. CAROLYN A. SMITH**  
Secretary, Board of Education





# BOWLING NEWS



## Junior Swingers

Standings as of April 29	W	L
Rod's	30 1/2	33 1/2
B. C.'s	78 1/2	45 1/2
Pin Pushers	72	52
74 Swingers	70 1/2	53 1/2
Strikers	52	72
Saturday Strikers	50	74
Champions	48	78
B. B. A.	44 1/2	79 1/2

Games over 130: M. Burnett, 131; S. Bowen, 140; J. Collins, 153; L. Hafner, 189, 160; B. McGuire, 150; V. Burnett, 151, 163, 133; B. Burgess, 130; D. Eisele, 158, 155; K. Harris, 153, 146; J. Toon, 157, 169, 141; R. Weiner, 181, 140; S. Schultz, 132, 130; M. Fahrner, 134, 134; S. Lyerca, 149, 149, 140; D. Alber, 174, 141, 160; D. Messner, 143, 136, 176.

Series over 350: S. Bowen, 366; J. Collins, 376; L. Hafner, 468; B. McGuire, 150; V. Burnett, 447; D. Eisele, 416; K. Harris, 413; J. Toon, 467; R. Weiner, 443; S. Schultz, 350; M. Fahrner, 378; D. Alber, 475; S. Lyerca, 438; D. Messner, 455.

## Guys and Gals Mixed League

Standings as of April 27	W	L
Pub No. 2	85	43
Pub No. 1	75	53
Seitz's Tavern	69	59
Chelsea Lanes	67	61
Pleasant Lake Resort	67	61
Grass Lake	65	63
The Odd Couples	62	66
Team No. 1	61	67
Norris Electric	60	68 1/2
Hay Haulers	56	72
Chelsea Standard	51	77
Lanewood	50	78

Team high game: Pub No. 1, 886.

Team high series: Pub No. 1, 2,398.

Women, high game: N. Collins, 259.

Women, high series: N. Collins, 618.

Women, 150 or over games: S. Steele, 150; J. Buku, 176, 169; N. Collins, 196, 163, 259; P. Elliott, 158; P. Huston, 160; E. Koenigster, 150; C. Timmerman, 171; S. Moore, 159.

Men, 175 or over games: W. Cozens, 186; T. Steele, 185; J. Collins, 195; R. Huston, 178, 193; J. Elliott, 199, 202; G. Scripster, 182; O. Timmerman, 183, 186; A. Sannes, 175.

Meh, 500 or over series: O. Timmerman, 552; J. Elliott, 571; J. Collins, 510.

## 1972 Track Schedule

May 4-South Lyon (away) 4:00	May 6-Cardinal Relays 4:00
(Mich. Center)	May 9-Jackson Northwest 4:00
May 13-Regional (Michigan Center) 10:00	May 18-Conference (South Lyon) 3:00
May 20-State (E. Lansing) 10:00	

## LaFontaine Construction & Development Corp.

GENERAL CONTRACTORS  
Will Build To Your Specifications  
CUSTOM BUILDER - Residential, Commercial, Industrial  
COMPLETE HOME MODERNIZATION SPECIALISTS

★ Additions ★ Rec. Rooms ★ Cement Work  
★ Family Rooms ★ Roofing ★ Kitchens  
★ Attics ★ Siding ★ Patios

FREE ESTIMATES  
LICENSED BUILDERS

PHONE 475-2663  
525 N. MAIN, CHELSEA



## Billiards THE FAMILY GAME



## New Fun Game, Easy To Play... All Can Learn!

Try billiards for an evening's fun. It's new... exciting... easy to learn... the whole family can play together... great fun, and so inexpensive!

**CHELSEA LANES**  
1180 M-52 Phone GR 5-8141

## Tri-City Mixed League

Final Standings	W	L
Four Mobil	85	47
Jiffy Mixes	74	58
Chelsea Cleaners	72 1/2	50 1/2
3-D Sales & Service	72	60
Wolverine Tail & Small	70 1/2	61 1/2
Trail Blazers	67 1/2	64 1/2
Smith's Service	62	70
Jiffy Market	60	72
4-W's	60	72
Stiver's	58	74
Sprague Buick & Olds	58	74
Haydaull's Appliances	52 1/2	79 1/2

500 series, men: B. Cruise, 551; D. Dettling, 512; A. Fouty, 503; H. Kunzelman, 510; C. Staphish, 532.

200 games, men: H. Kunzelman, 200.

450 series, women: B. Fike, 459; D. Fouty, 452; B. Parish, 452.

150 games, women: U. Allen, 155; D. Eder, 152; B. Fike, 170; D. Fouty, 161; P. Griffith, 168, 154; R. Harook, 154; N. Miller, 154; B. Parrish, 164, 163; C. Stoffer, 160; D. Watkins, 154.

## Charlie Brown and Snoopy's Friends Peanut League

Final Standings	W	L
Pin Crackers	67	28
French Fries	52	41
Snoopy Stars	51 1/2	41 1/2
Harlem Globetrotters	51	42
Super Stars	45	48
Strikers	44	49
Meat Balls	40 1/2	52 1/2
Flintstones	30	63

High team game and series with handicap: Strikers, 677; Pin Crackers, 1,270.

High ind. game and series: D. Alber, 188, 282, actual.

Series over 100: J. Krichbaum, 129; D. Bowen, 161; D. Alber, 216; B. Freeman, 224; D. McGill, 238; G. Egeler, 162; R. Schultz, 178; T. Miller, 187; R. Klink, 153; J. Stock, 186; C. Ford, 164; C. Umstead, 210; R. Ostrander, 152; J. Boyer, 194; C. Kalishke, 142; D. Thompson, 179; J. Atkinson, 124; T. Greenleaf, 125; S. Radamacher, 130; D. Seyfried, 179; D. Eisle, 167; M. Steinaway, 167; D. Waidyke, 141.

Games over 70: T. Miller, 94; R. Klink, 70; J. Stock, 110, 76; C. Ford, 70; 94; C. Umstead, 119; 94; J. Boyer, 97, 97; D. Thompson, 95, 84; T. Greenleaf, 71; S. Radamacher, 82; D. Bowen, 78, 82; D. Alber, 131, 85; B. Freeman, 109, 115; D. McGill, 126, 112; G. Egeler, 72, 90; R. Schultz, 85, 83; D. Seyfried, 88, 91; D. Eisle, 82, 75; M. Steinaway, 87, 104; D. Waidyke, 75.

## Autograph Day Slated May 7 By Tiger Players

Detroit-The first Autograph Day of the season at Tiger Stadium will be Sunday, May 7, when the Tigers will be playing the Texas Rangers in a single game at 1:30 p.m.

Eight Tigers will sign autographs for young fans between 12:20 p.m. and 12:50 p.m. that afternoon at four stations-behind Section 34 in the Upper and Lower Decks, behind Section 6 in the Upper Deck, and behind Section 10 in the Lower Deck.

Players for the first of six autograph days planned for the season are Gates Brown, Joe Coleman, Tom Haller, Paul Jata, Dalton Jones, Phil Meeker, Mickey Stanley and Dick Tracewski.

## Chelsea Cribbage Tournament

	W	L
John Norris	20	10
Leva Norris	18	12
Ralph Castleman	16	14
Alice Moore	16	14
Rick Gilmore	16	14
Fremont Boyer	14	6
Richard Scripster	13	7
Darlene Snyder	11	19
Jim Hoffmeyer	9	11
Waldo Steinaway	9	11
Walter Gochanour	8	12
Jack Pfeifle	6	14

Players with only 20 games will play Monday, May 8. Top 8 players in tournament will play for championship May 15.

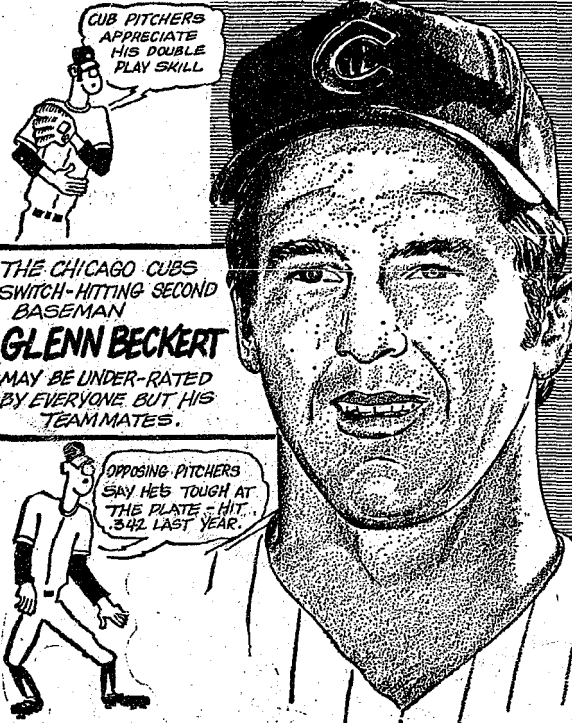
The first bunch of bananas ever seen in Britain was grown in Bermuda in 1644.

**YES**  
WE ARE MAKING  
LONG-TERM FARM  
REAL ESTATE  
LOANS

SEE US

**Federal LAND BANK**  
P. O. Box 1006  
Ph. 769-2411 8645 Jackson Rd.  
Ann Arbor, Mich. 48108

# SPORTS CORNER



## Chelsea Lanes Mixed

Standings as of April 28	W	L
Marsh & Eder	134	90
A.A. Cent. Grinders	133	91
Morgan & Turner	131	93
Heim & Arrington	115	109
Chelsea Lanes	114	110
Barkley & Gephart	110	114
The Pub	109	115
Fitzsimmons Excav.	107	117
Meabon's	106	118
Sable's Collision	106	118
Bollinger Sanitation	92	132
Jarvis & Goltra	87	137

Women, 150 games: L. Alexander, 181, 160, 158; L. Gilmore, 174; L. Jarvis, 169; K. Gephart, 167; D. Keezer, 158, 155; A. Turner, 157, 164; N. Keezer, 152.

Men, 175 games: D. Eder, 231; L. Keezer, 213; R. Morgan, 204, 180; T. Marsh, 204; G. Doyle, 198, 183; D. Longworth, 191; D. Alexander, 189; G. Arrington, 188; F. Blackwell, 182; J. Turner, 181; M. Packard, 180, 175; F. Barkley, 179; W. Steinaway, 178.

Women, 450 series: L. Alexander, 499.

Men, 475 series: G. Doyle, 541; L. Keezer, 528; T. Marsh, 528; M. Packard, 526; D. Eder, 524; R. Morgan, 521; F. Barkley, 514; R. Bauer, 498.

**BIG RICE CROP**  
Today, Louisiana's major crop is rice.



## GIRL SCOUTS

**TROOP 98**  
We started the meeting talking about camp and going to Cedar Point. Then we had a rap session. We talked about having a dance and about troop organization. At the end of the meeting Mrs. Foreman told us about Stanley Products.

Julienne Tucker, scribe.

**TROOP 169**  
Prownie Troop 169 delivered many baskets in the rain. Everyone got very wet but it was fun. Mrs. Eisele and Mrs. Sattartha were the helping mothers. Treats were furnished by Ann Eisele.

Lisa Luckhardt, scribe.

**TROOP 689**  
The Green Butterflies opened the meeting with the flag ceremony. Our sister Brownie Troop visited us. Beth Wireman showed us post cards for her collector's badge. Valisa Fletcher showed us pictures, too. We had a new girl join our troop. Her name is Laurie Ann Van Riper. Jeryl Herrick brought treats. We closed the meeting with taps.

Karen Blanchard, scribe.

Telephone Your Club News  
To GR 5-3581.

# See Us for Your FARM CHEMICALS

- ★ Aatrex
- ★ Lasso
- ★ Dacthal
- ★ Estron 99
- ★ Formula 40
- ★ Lorox 50W
- ★ MCP Amine
- ★ Princip 80W
- ★ Seyin 50W
- ★ Sevin 80W

## FARMERS' SUPPLY CO.

122 Jackson St. Phone GR 5-5511

When putting leftovers into a refrigerator, always put tape across the top with the date written on it. Then you'll always know how long an item has been in the refrigerator.

**OUNCE OF PREVENTION**  
The Child Protection Act of 1966 banned the interstate commerce of toys or articles intended for use by children that bear or contain hazardous substances.

## CONSOLIDATED REPORT OF CONDITION OF Chelsea State Bank

of Chelsea, Michigan 48118, at the close of business April 18, 1972, a state banking institution organized and operating under the banking laws of this State and a member of the Federal Reserve System. Published in accordance with a call made by the State Banking Authorities and by the Federal Reserve Bank of this District.

ASSETS	
Cash and due from banks (including no unposted debits)	\$ 1,897,178.05
U. S. Treasury securities	4,575,603.15
Obligations of other U. S. Government agencies and corporations	199,875.00
Obligations of States and political subdivisions	2,713,044.94
Other securities (including \$36,000 corporate stocks)	59,350.00
Federal funds sold and securities purchased under agreements to resell	600,000.00
Other loans	12,376,665.47
Bank premises, furniture and fixtures, and other assets representing bank premises	327,489.26
<b>TOTAL ASSETS</b>	<b>\$22,249,105.87</b>
LIABILITIES	
Demand deposits of individuals, partnerships, and corporations	\$ 4,475,674.26
Time and savings deposits of individuals, partnerships, and corporations	14,044,553.77
Deposits of United States Government	125,789.18
Deposits of States and political subdivisions	797,296.91
Certified and officer's checks, etc.	219,958.33
<b>TOTAL DEPOSITS</b>	<b>\$19,663,272.45</b>
(a) Total demand deposits	5,363,718.68
(b) Total time and savings deposits	14,299,553.77
Other liabilities	415,168.60
<b>TOTAL LIABILITIES</b>	<b>\$20,078,441.05</b>
RESERVES ON LOANS AND SECURITIES	
Reserve for bad debt losses on loans (set up pursuant to IRS rulings)	\$ 179,939.08
<b>TOTAL RESERVES ON LOANS AND SECURITIES</b>	<b>\$ 179,939.08</b>
CAPITAL ACCOUNTS	
Equity capital, total	\$ 1,990,725.74
Common stock—total par value	400,000.00
(No. shares authorized 8,000)	
(No. shares outstanding 8,000)	
Surplus	800,000.00
Undivided profits	690,725.74
Reserve for contingencies and other capital reserves	100,000.00
<b>TOTAL CAPITAL ACCOUNTS</b>	<b>\$ 1,990,725.74</b>
<b>TOTAL LIABILITIES, RESERVES, AND CAPITAL ACCOUNTS</b>	<b>\$22,249,105.87</b>

**MEMORANDA**

Average of total deposits for the 15 calendar days ending with call date \$20,288,604.63

Average of total loans for the 15 calendar days ending with call date 12,256,900.37

Deposits of the State of Michigan 29,999.15

I, Paul G. Schaible, Jr., Vice President & Cashier of the above-named bank, do hereby declare that this report of condition is true to the best of my knowledge and belief.

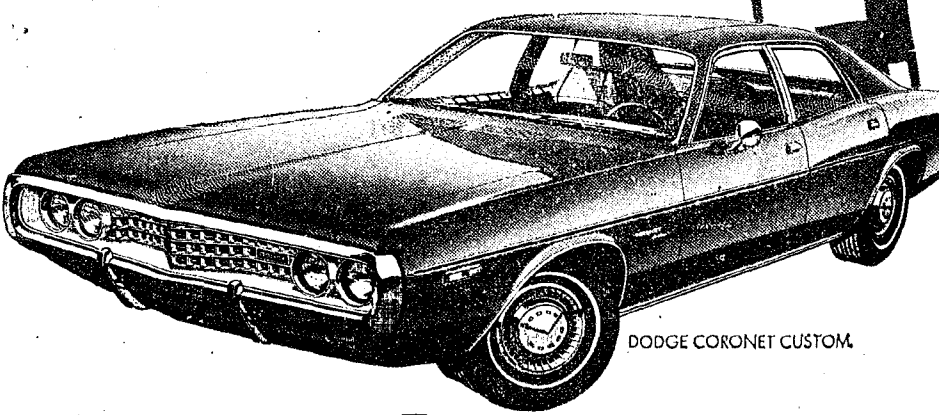
PAUL G. SCHAIABLE, JR.

We, the undersigned directors, attest the correctness of this report of condition and declare that it has been examined by us and to the best of our knowledge and belief is true and correct.

PAUL E. MANN  
JOHN P. KEUSCH  
ROBERT L. DANIELS  
Directors

State of Michigan, County of Washtenaw, ss:  
Sworn to and subscribed before me this 26th day of April, 1972.  
Dorothy L. Fowler, Notary Public  
My commission expires June 27, 1972.

# VILLAGE MOTOR SALES CAN OFFER YOU A GREAT-LOOKING FAMILY SEDAN WITH A...



# The Dodge Boys Have It All!

★ GREAT CARS  
★ GREAT DEALS  
★ GREAT SAVINGS  
★ BACKED BY  
DEPENDABLE SERVICE

Shop Now—During  
Dodge Dealin' Days

at **VILLAGE MOTOR SALES, INC.**  
1185 MANCHESTER ROAD CHELSEA, MICHIGAN

**Dodge** CHRYSLER  
AUTHORIZED DEALERS

**FREE VINYL ROOF.**

The Dodge Boys can offer you a vinyl roof FREE OF CHARGE (because Dodge doesn't charge us for it) when you buy a specially equipped 1972 Dodge Coronet Custom Topper sedan with front and rear bumper guards, upper door mouldings, sill mouldings, vinyl body side mouldings, and a cloth-and-vinyl split-back bench seat with center armrest.

THESE ARE THE GOOD GUYS TO SEE:  
TOM STOCK  
PAUL SIMON

**DEPEND ON THE DODGE BOYS**



## St. Louis School Notes

urday, April 29 the St. Louis 1 celebrated its first reunion, honoring alumni and friends. Judy Fryback, class of 1962, Judy Fryback, teacher at the school, and Al former student and president of alumni association, with assistance from the staff of the school, made the day possible. The day's program was full of activities for alumni and present students. After a lively round of sports, the boys put on a show, playing instruments, singing and dancing, followed by a basketball game. The game pit alumni against present students, coached by Father Umberto assisted by Duke Weiss. Pasiebert refereed the game. After the game, alumni and students were treated to a band concert by boys of the school, under directorship of Father Umberto. The party continued with a dinner which was donated, prepared, served by parents of the boys in the school. Margaret Randall, co-chairman in charge of the dinner, and Mr. and Mrs. Wesley vicin provided the lavish ta-

ble decorations. The dining room was decked out in the school's colors, red and gold, while at the guest table stood a gold rooster trimmed with red roses. A social hour and dance followed the dinner with the Brothers and Sisters Band providing the entertainment. The "Sisters" are from Waterloo and are the daughters of Mr. and Mrs. Charles Young and the "Brothers" are the sons of Mr. and Mrs. Danny Foytik of Chelsea. During the dance, punch, cookies, and ice cream were served as refreshments. Steve Siebert took pictures to commemorate the day's activities. Mrs. Susan Harding, counselor at the Beach Junior High, and Mrs. Evelyn Quigg brought a group of girls from the Chelsea schools to participate in the day's fun. Alumni attended the reunion from as far away as Cleveland, Toledo, Grand Rapids and Detroit. Ricky Sequin celebrated his birthday at the school Wednesday with a cake and ice cream party. Telephone Your Club News To GR 5-3581.

## 14th District Court Proceedings

### Week of April 12-18

John Bernard, Dearborn, fined \$90 or 20 days for violating probation on a charge of driving with a suspended license.

Philip Nickerson, Manchester, pled guilty to a charge of careless driving and was fined \$30 or 10 days.

Rocky Lee Cole, Clinton, pled guilty to a charge of executing an improper U-turn and was fined \$31 or 10 days.

Jesse Sweeney, Ypsilanti township, pled guilty to a charge of being a disorderly person and was fined \$29.

Robert Griffin, Saline, pled guilty to a charge of failing to maintain proper equipment and was fined \$16 or 10 days.

Donald Hutchins, Saline, had charges of driving with expired plates and license dismissed with \$6 costs and proof of new license and plates.

Ray Deckert, Saline, pled guilty to having no operator's license on his person and was fined \$6 and proof of license.

Steven Knickerbocker, Chelsea, sentenced to \$104 fine and probation for furnishing intoxicants to minors.

Richard Tarrier, Dexter, pled \$6 costs for driving, with expired plates.

David Keezer, Manchester, pled guilty to a charge of failing to have his vehicle under control and was fined \$21 or 10 days.

Walter Weber, Ann Arbor, was fined \$150 and six months probation for driving under the influence of alcohol.

Theodore Huff, Ann Arbor, pled guilty to larceny under a \$100 and was fined \$84, six months probation, and restitution.

John Dodson, Ann Arbor, was found guilty of driving a motorcycle in a picnic area and was fined \$16 or five days.

Peter Tryand, Ann Arbor, pled guilty to a charge of larceny under \$100 and was fined \$79, four days on Dexter Police Department work program, six months probation, and restitution of \$35.50 to Gould Service.

Harold Dunnigun, Belleville, pled guilty to driving with a suspended license. Sentencing is set for May 22.

Kenneth Hudson, Abilene, Tex., pled guilty to a charge of littering and was fined \$100 or 10 days.

Richard Northrup, Whitmore Lake, pled guilty to a charge of littering and was fined \$100 or 10 days.

Norman Pettigrew, Whitmore Lake, pled guilty to a charge of careless driving and was fined \$30 or 10 days.

Steven Hubler, Ann Arbor, pled guilty to driving 85 mph in a 35 mph zone and was fined \$100 or 30 days.

Austin Sharpe, Manchester, pled guilty to being drunk and disorderly and was fined \$50 or 15 days.

Altan Blanchette, Monroe, was found guilty of driving under the influence of alcohol and fined \$200 or 30 days.

Thomas E. Knight, Dexter, was found guilty of impaired driving. Sentencing is set for June 5.

Carl Yost, Detroit, pled guilty to being drunk and disorderly and was fined \$50 or 15 days.

Kevin Beckington, Saline, pled guilty to a charge of failing to have his vehicle under control and was fined \$21 or 10 days.

Joseph Kidd, Manchester, pled guilty to a charge of excessive noise and paid \$6 costs.

David Lancaster, Ann Arbor, pled guilty to exceeding the basic speed limit and was fined \$21 or 10 days.

Michael Curtis Howard, Nashville, Tenn., pled guilty to driving 60 mph in a 45 mph zone and was fined \$21 or 10 days.

Allan McCormack, Ypsilanti, pled guilty to driving 60 mph in a 45 mph zone and was fined \$21 or 10 days.

Joseph Palensky, Flint, pled guilty to a charge of impaired driving and was referred to probation. Sentencing is set for May 30.

Gerald Berkley, Milan, pled guilty to a charge of impaired driving and was referred to probation. Sentencing is set for May 30.

Glen Wilson, Ann Arbor, pled guilty to a charge of impaired driving and was referred to probation. Sentencing is set for May 30.

Week of April 26-May 2

Randolph Patrick, Chelsea, was sentenced to a fine of \$25 or 10 days for littering.

Terry Roskowski, Chelsea, was guilty of reckless driving on ice and was fined \$35 or 10 days.

Duane Brassow, Ann Arbor, entered a plea of nolo contendere and was fined \$50 or 15 days on a charge of being drunk and disorderly.

Charles Balze, Chelsea, pled guilty to a charge of being drunk and disorderly and was fined \$50 or 10 days.

Ronald Eubanks, Chelsea, was found guilty of reckless driving on ice and was fined \$35 or 10 days.

Gary Ferry, Ann Arbor, pled guilty to the unlicensed use of a trailer and was fined \$25 or 10 days.

Bradley Hoffman, Onstead, pled guilty to a charge of driving under the influence of alcohol and was referred to probation. Sentencing is set for June 12.

Arthur Walsh, Detroit, pled guilty to speeding, driving without an operator's license, and without proof of insurance, and was fined \$31 or 10 days, \$64 or 15 days, and \$26 or 10 days respectively.

William Mitchell, Adrian, pled guilty to driving 65 mph in a 45 mph zone and was fined \$41 or 10 days.

William Parker, Brooklyn, pled guilty to driving 45 mph in a 30 mph zone and was fined \$21 or 10 days.

Elizabeth Merriman, Manchester, pled guilty to disregarding a stop sign and was fined \$16 or 10 days.

Robert Franz, Ann Arbor, pled guilty to disregarding a stop sign and was fined \$16 or 10 days.

Robert Cashion, Manchester, pled guilty to driving 35 mph in a 25 mph zone and was fined \$21 or 10 days.

Peter Blaine, Saline, pled guilty to driving 45 mph in a 25 mph zone and was fined \$31 or 10 days.

Sharon Elliott, Milan, pled guilty to driving 47 mph in a 25 mph zone and was fined \$35 or 10 days.

Phillip Ormsby, Saline, pled guilty to driving a cycle without a helmet and paid \$6 costs and driving without license plates and was fined \$10 or 10 days.

Jim Allen, Saline, pled guilty to having a dog at large and was fined \$16 or 10 days.

Robert Griffin, Saline, pled guilty to having no license plates on a motorcycle and was fined \$10 or 10 days.

Steven Allstetter, Milan, pled guilty to driving 40 mph in a 25 mph zone and was fined \$21 or 10 days.

James Sexton, Chelsea, pled guilty to being drunk and disorderly and was fined \$50 or 10 days.

Terrance Baumgartner, Pinckney, pled guilty to driving 75 mph in a 35 mph zone and was fined \$71 or 10 days.

Peter Katapol, Dexter, pled guilty to trespassing and was fined \$39 or 10 days.

Christopher Gow, Whitmore Lake, found guilty of driving 80 mph in a 70 mph zone and was fined \$21.

Melvin Jarrett, Whitmore Lake, entered a plea of nolo contendere to a charge of driving under the influence of alcohol and was fined \$100 or 30 days.

Shirley Johnson, Milan, pled guilty to driving 41 mph in a 25 mph zone and was fined \$23 or 10 days.

Roger Davis, Saline, pled guilty to driving 48 mph in a 25 mph zone and was fined \$37 or 10 days.

William Glaze, Saline, pled guilty to excessive noise and was charged \$6 costs with the proof of repair of his mufflers.

Cynthia Jessie, Milan, pled guilty to driving 45 mph in a 25 mph zone and was fined \$31 or 10 days.

Clifford Nixon, Ann Arbor, was sentenced to six months probation and \$100 fine for assault and battery.

Douglas Kivi, Saline, pled guilty to driving 45 mph in a 25 mph zone and was fined \$31 or 10 days.

Robert Andrews, Lambertville, pled guilty to driving 43 mph in a 25 mph zone and was fined \$27 or 10 days.

Stanley Davis, Saline, pled guilty to driving 48 mph in a 25 mph zone and was fined \$37 or 10 days.

Roger Schroen, Milan, was found guilty of impaired driving. Sentencing is set for June 6.

Norman Sandefer, Saline, pled guilty to a charge of careless driving and was fined \$30 or 10 days.

James Curry, Tecumseh, was found guilty of impaired driving. Sentencing is set for June 6.

## Walk Project Funds Help In Many Spots

A most exciting aspect about the Walk for Mankind is the extraordinary purchasing power of the sponsor's dollar in supporting Project Concern's clinics in Appalachia, New Mexico, Texas, Mexico, Hong Kong, and Vietnam. One sponsor's nickel-per-mile contribution on a 20-mile route provides seven days of treatment for a man with parasitic intestinal worms; a 25 cents per mile pledge on the same completed route provides 17 days of treatment for fungus; 50 cents-per mile supplies a child with three months of medicine and food; and a sponsor's offering of 80 cents-per mile makes possible six months of care for a tuberculous victim.

As a walker, sponsored at a total of \$2.50 per mile, tiredly trudges on to the 20-mile checkpoint, he guarantees medical care for an entire Vietnamese village and support for a medical assistant there. In these days of inflation, it is surprising how far Walk proceeds can go in helping mankind.

\$220—supports Project Concern's program in Appalachia for one day.

\$225—supports the Bisti, N. M. program for one day.

\$385—finances Project Concern's hospitals in Vietnam for one day.

\$400—operates five clinics in Hong Kong for one day.

\$470—supports the Tijuana clinic for one day.

Chelsea Jaycees thus urge that you Walk for Mankind on May 6, or that you sponsor a walker. "It's a great buy," comments Todd Gardner, Jaycee project chairman.

This Sunday is also designated C.A. Day (Christ's Ambassadors) by the national organization of the Assemblies of God youth. The 7 p.m. service will be directed by the young people who are featuring a guest speaker, Tim Johnson of Chelsea, special music and group interpretation. Theme of the evening is "Flow Through Me."

The young people are being assisted by Mrs. T.B. (Dorothy) Thodeson and Mrs. Albert (Jean) Wisecup.

Three CHS Youths Complete Army Basic Training at Ft. Knox

Three 1971 graduates of Chelsea High school have completed eight weeks of basic training at the U.S. Army Training Center, Armor, Ft. Knox, Ky.

They are Pvt. Mitchell L. Heard, 18, son of Mr. and Mrs. Hubert Heard, 1478 Manchester Rd., who received his training with Company C, 16th Battalion, 4th Brigade; Pvt. Robert A. Salyer, 18, son of Mr. and Mrs. Roma Salyer, 227 Jefferson St., who received his training with Company B, 15th Battalion, 4th Brigade; and Pvt. Timothy Ormbring, 20, son of Mr. and Mrs. Henry E. Ormbring, 20232 Scio Church Rd., who received his training with Company A, 16th Battalion, 4th Brigade.

The three received instruction in drill and ceremonies, weapons, map reading, combat tactics, military courtesy, military justice, first aid, and army history and traditions.

"Fully-cooked" hams may be served unheated. Full flavor is developed however, by heating the ham in a slow oven to 140 degrees Fahrenheit.

Culture is that illusory thing that makes us think we'll like something we won't.

GOSSO Carpet Cleaning

May is spring cleaning time! Your carpeting deserves special attention. We recommend Host, the new method of cleaning carpets without water. The carpet is dry and ready to walk on immediately. Use our Host Electric Up-Brush. It's easy. Clean 40 sq. yds. only \$9.95. Phone for information.

MERKEL BROTHERS

Phone 475-8621

## Chelsea Woman's Son Helping Establish Air Force College

San Antonio—U.S. Air Force Lieutenant Colonel Richard N. Culbertson has been appointed Air University representative of the new Community College of the Air Force (CCAF) operated by the Air Training Command (ATC) at Randolph AFB, Tex.

Colonel Culbertson, son of Mrs. Edna M. Schwab of Chelsea, Mich., is helping build a computer-operated data system which will translate an airman's military training into civilian language and college semester hours.

The colonel and fellow Air Force innovators on the staff of CCAF were selected, primarily, from the personnel and education-and-training career fields. The system they are establishing also will record any non-military, college-level training an airman has completed before and during his term of enlistment.

The college—with no campus, instructors, or students of its own—is seeking official recognition from college accreditation associations, government and professional licensing agencies, and industry.

More than 100,000 veterans who leave the Air Force each year trained for work in civilian occupations could benefit from the new program. Processing meaningful certification equivalent to that of their civilian counterparts, these veterans would compete for employment on a more equitable basis.

Before joining the CCAF staff, Colonel Culbertson was assigned at Gunter AFB, Ala.

The 24-year veteran was commissioned in 1943 through the aviation cadet program and served during World War II and the Korean War. He holds the aeronautical rating of command pilot and has served nine months in Vietnam.

A 1934 graduate of Southeastern High school in Detroit, the colonel received a BA degree in 1947 from Wayne State University and an MA degree in 1965 from the University of Maryland.

His wife is the former Elizabeth A. Osinga.

Telephone Your Club News To GR 5-3581.

## EDWIN H. MURTO & ASSOCIATES

AUCTIONEER & REAL ESTATE BROKERS  
600 Long Lake, Chelsea, Mich. (313) 475-1205

COMPLETE AUCTION SERVICE  
Personal & Real Estate Property  
None Too Big or Too Small for Us!

When your day of retirement arrives when you wish to cut down your operation or wish to sell for any reason it will be to your advantage to contact us. We have the experience, knowledge and ability to perform the one service to make a successful auction sale.

Always A Fair Market Price —  
Determined by Honest Competitive Bidding

FOR QUICK CASH ON A SPECIFIED DATE  
USE OUR METHOD OF SELLING YOUR PROPERTY

## PRESIDENTIAL PRIMARY ELECTION

To the Qualified Electors:  
NOTICE IS HEREBY GIVEN, That a Presidential Primary Election will be held in the

TOWNSHIP OF DEXTER

(Precinct No. 1)  
State of Michigan

at  
DEXTER TOWNSHIP HALL

6880 Dexter-Pinckney Road  
within said Township on

TUESDAY, MAY 16, 1972

FOR THE PURPOSE OF VOTING FOR CANDIDATES FOR THE OFFICE OF:

PRESIDENT OF THE UNITED STATES

AND FOR THE PURPOSE OF ELECTING THE FOLLOWING:

DELEGATES TO THE COUNTY CONVENTIONS OF THE DEMOCRATIC, REPUBLICAN, AMERICAN INDEPENDENT PARTIES.

AND ALSO TO VOTE ON THE FOLLOWING CONSTITUTIONAL AMENDMENTS:

A. Proposed Constitutional Amendment to allow the Legislature to authorize lotteries and to permit the sale of lottery tickets.

This amendment would allow the legislature to enact laws to authorize lotteries and to permit the sale of lottery tickets.

B. Proposed Constitutional Amendment to permit members of the legislature to resign and accept another office to which they have been elected or appointed.

This amendment would permit members of the legislature to be elected or appointed to another civil office during the term for which they were elected. Before accepting that office they would be required to resign from their legislative office.

ALSO ANY ADDITIONAL AMENDMENTS OR PROPOSITIONS THAT MAY BE SUBMITTED

Notice Relative to Opening and Closing of the Polls

ELECTION LAW, ACT 116, P.A. 1954  
SECTION 720. On the day of any election, the polls shall be opened at 7 o'clock in the forenoon, and shall be continuously open until 8 o'clock in the afternoon and no longer. Every qualified elector present and in line at the polls at the hour prescribed for the closing thereof shall be allowed to vote.

THE POLLS of said election will be open at 7 o'clock a.m. and will remain open until 8 o'clock p.m. of said day of election.

WILLIAM EISENBEISER, Township Clerk

## OFFICE SPACE FOR RENT

500 sq. ft.  
Recently remodeled.

MERKEL BROS.

Phone 475-8621

Presidential Primary Election

To the Qualified Electors:  
NOTICE IS HEREBY GIVEN, That a Presidential Primary Election will be held in the

TOWNSHIP OF SYLVAN

(Precincts No. 1 and 2)  
State of Michigan

at  
SYLVAN TOWNSHIP HALL

112 West Middle St., Chelsea  
within said Township on

TUESDAY, MAY 16, 1972

FOR THE PURPOSE OF VOTING FOR CANDIDATES FOR THE OFFICE OF:

PRESIDENT OF THE UNITED STATES

AND FOR THE PURPOSE OF ELECTING THE FOLLOWING:

DELEGATES TO THE COUNTY CONVENTIONS OF THE DEMOCRATIC, REPUBLICAN, AMERICAN INDEPENDENT PARTIES.

AND ALSO TO VOTE ON THE FOLLOWING CONSTITUTIONAL AMENDMENTS:

A. Proposed Constitutional Amendment to allow the Legislature to authorize lotteries and to permit the sale of lottery tickets.

This amendment would allow the legislature to enact laws to authorize lotteries and to permit the sale of lottery tickets.

B. Proposed Constitutional Amendment to permit members of the legislature to resign and accept another office to which they have been elected or appointed.

This amendment would permit members of the legislature to be elected or appointed to another civil office during the term for which they were elected. Before accepting that office they would be required to resign from their legislative office.

ALSO ANY ADDITIONAL AMENDMENTS OR PROPOSITIONS THAT MAY BE SUBMITTED

Notice Relative to Opening and Closing of the Polls

ELECTION LAW, ACT 116, P.A. 1954  
SECTION 720. On the day of any election, the polls shall be opened at 7 o'clock in the forenoon, and shall be continuously open until 8 o'clock in the afternoon and no longer. Every qualified elector present and in line at the polls at the hour prescribed for the closing thereof shall be allowed to vote.

THE POLLS of said election will be open at 7 o'clock a.m. and will remain open until 8 o'clock p.m. of said day of election.

DANIEL MURPHY, Township Clerk

Notice Relative to Opening and Closing of the Polls

ELECTION LAW, ACT 116, P.A. 1954  
SECTION 720. On the day of any election, the polls shall be opened at 7 o'clock in the forenoon, and shall be continuously open until 8 o'clock in the afternoon and no longer. Every qualified elector present and in line at the polls at the hour prescribed for the closing thereof shall be allowed to vote.

THE POLLS of said election will be open at 7 o'clock a.m. and will remain open until 8 o'clock p.m. of said day of election.

WILLIAM EISENBEISER, Township Clerk

WE'VE GOT THE MODEL, SIZE, COLOR AND PRICE TO SUIT YOU!

Introducing  
FRIGIDAIRE'S  
Sensational New  
POPPY  
COLOR

That You Have Been Asking For!

WASHERS - DRYERS

REFRIGERATORS

RANGES

Now On Display

On Our Floor!

Come in and inspect them today.

GO WHERE ALL THE FRIGIDAIRE HAPPENINGS ARE . . .

MEABON'S TV, FURNITURE & APPLIANCE

1170 M-52, South, Chelsea

Phone 475-5191



# SPECIAL

thru Wednesday, May 10, 1972

## BRAZIER HAMBURGER

## and FRENCH FRIES

# 67¢

Home of fine Brazier food.



## brazier.

1 S. MAIN ST., CHELSEA PHONE 475-2677

## PRESIDENTIAL PRIMARY ELECTION

To the Qualified Electors:

NOTICE IS HEREBY GIVEN, That a Presidential Primary Election will be held in the

### TOWNSHIP OF LYNDON

(Precinct No. 1)

State of Michigan

at

### LYNDON TOWNSHIP HALL

Corner of North Territorial and Town Hall Rds.  
within said Township on

## TUESDAY, MAY 16, 1972

FOR THE PURPOSE OF VOTING FOR CANDIDATES  
FOR THE OFFICE OF:  
**PRESIDENT OF THE UNITED STATES**

AND FOR THE PURPOSE OF ELECTING  
THE FOLLOWING:

**DELEGATES TO THE COUNTY CONVENTIONS  
OF THE DEMOCRATIC, REPUBLICAN,  
AMERICAN INDEPENDENT PARTIES.**

AND ALSO TO VOTE ON THE FOLLOWING  
CONSTITUTIONAL AMENDMENTS:

**A. Proposed Constitutional Amendment to allow  
the Legislature to authorize lotteries and to  
permit the sale of lottery tickets.**

This amendment would allow the legislature to enact  
laws to authorize lotteries and to permit the sale of  
lottery tickets.

**B. Proposed Constitutional Amendment to per-  
mit members of the legislature to resign and  
accept another office to which they have  
been elected or appointed.**

This amendment would permit members of the leg-  
islature to be elected or appointed to another civil  
office during the term for which they were elected.  
Before accepting that office they would be required  
to resign from their legislative office.

ALSO ANY ADDITIONAL AMENDMENTS OR  
PROPOSITIONS THAT MAY BE SUBMITTED

Notice Relative to Opening and Closing of the Polls

ELECTION LAW, ACT 116, P.A. 1954  
SECTION 720. On the day of any election, the polls shall  
be opened at 7 o'clock in the forenoon, and shall be  
continuously open until 8 o'clock in the afternoon and no  
longer. Every qualified elector present and in line at the  
polls at the hour prescribed for the closing thereof shall  
be allowed to vote.

THE POLLS of said election will be open at 7 o'clock a.m.  
and will remain open until 8 o'clock p.m. of said day  
of election.

**DORIS M. FUHRMANN, Township Clerk**

## Letters to the Editor

Dear Editor:

There has been much publicity  
given recently to land sales of  
northern Michigan recreational  
property. I thought that you might  
be interested in the treatment I  
received from a sales representa-  
tive of the American Central Cor-  
poration, Lansing, at their "Lake  
of the North" development south-  
west of Gaylord, on Sunday, April  
16.

I, along with about 17 other  
prospects, was flown to "Lake of  
the North." The understanding I  
received before going, from their  
contact agents, Columbia Realty,  
Inc., of Southfield, and from liter-  
ature given me, was that I would  
be under no obligation of any kind,  
whatsoever.

Upon arrival at the development,  
I was met by a sales representa-  
tive, and I was shown around the  
various areas and the potentials of  
the region were pointed out to me.  
After the tour was completed, I  
was asked if I would be interested  
in buying. I told the representa-  
tive that I did not want to buy at  
this time. I told him that I ap-  
preciated his time and effort and  
that the development was impres-  
sive.

Here was how I was handled by  
this representative, at the landing  
strip, while waiting for the plane  
to arrive to return us to our origi-  
nal destination.

He came to me and told me he  
had just called my wife, who was at  
home, to see if she was ill, as I had  
told him earlier.

He called me a liar and told me  
I had wasted his time.

To top off this whole sorry ex-  
perience, and with at least two  
other "Lake of the North" repre-  
sentatives present, I told him I  
was going to tell the American  
Central Corporation about his be-  
havior. (A letter has been dis-  
patched.) The others jeered and  
said the company "already knew,"  
implying it was not his conduct,  
but mine that should be questioned.  
Then the sales representative who  
had shown me around said I was  
cheap and that I should pay \$75  
for the plane ride.

I am sure the agents for the  
companies mentioned are still con-  
tacting prospective customers in  
Southern Michigan.

If you consent to go, and get the  
sales representatives who can not  
take NO for an answer, be pre-  
pared to have the privacy of your  
home invaded; your integrity at-  
tacked and your reputation slan-  
dered, if you "waste the salesman's  
time."

Patrick J. Wade.

To the Editor:

In the beginning I had my doubts,  
but as time went on I knew our  
project was a sure thing.

We call ourselves "We Care" and  
we do care! On April 22, we spon-  
sored the Chelsea Community Barn  
Dance. Five of the greatest bands  
around came and donated their  
time to our cause. They were: The  
Blue Mountain Band, Jimmy Ro-  
mine and Gary Scripator, Marc IV,  
The Basic Sound which was a band  
from the Michigan School for the  
Blind in Lansing. There was an-  
other band from the blind school  
also. We had an auction which  
went very well and plenty of re-  
freshments. All of the proceeds  
from our dance will be used to pur-  
chase an Amana Radar-Range for  
the Michigan School for the Blind  
in Lansing. We will purchase it  
from Heydlauff's appliance store.

The dance was a success, we had  
a lot of help from outsiders to  
whom we are very grateful. Dale  
Fisher, our adult sponsor, was  
sensational. He opened our eyes  
to many of the problems we would  
have putting on this dance, but he  
stuck with us and we worked  
around them.

Many of the Chelsea merchants  
were very generous with their do-  
nations of merchandise for our  
auction and/or money for the full  
page ad we took out in The Che-  
lsea Standard to publicize our  
dance. So many people helped out  
in so many different ways I could  
not begin to list them all, but if  
they are reading this, they know  
about whom I'm speaking.

On behalf of "We Care" I'd like  
to thank anyone who helped out in  
any way. I'd also like to add this,  
if we have another project next  
year I hope more people will show  
they care and get involved with  
"We Care."

Thank you,  
Gilda Gillespie  
Committee Chairman.

### Doll, Toy Exhibit Stated This Week-end

The second annual Doll and Toy  
exhibit of the Ann Arbor Doll Col-  
lectors' group will be held Satur-  
day and Sunday, May 13 and 14,  
in Ann Arbor.

Scene of this year's show, to  
which there is no admission  
charge, is the Kempf House at 312  
S. Division. The exhibit will be  
open from 1 to 5 p.m. each day  
and will feature dolls and toys  
from years gone by from the col-  
lections of area people.

## Generation Gap U.S.A.



"There's a sign of spring... Hippies on the move..."

### Junior High Track Team Clobbers Northville South Lyon

With two record-breaking runs  
and unexpected success in the field  
events, the Chelsea Junior High  
school track team swept to a two-  
way victory in a triangular meet  
Wednesday, April 26. Chelsea's  
74 1/2 points far outdistanced North-  
ville's 47 1/2 and South Lyon's 37  
to keep their season's record un-  
blemished at 6-0.

Dave Frame broke his own  
school record for the second con-  
secutive week as he lowered his  
time in the 880-yd. run from last  
week's time of 2:29.9 to 2:23.4.  
This was only good for a second-  
place, in the event, but Chelsea  
gained unexpected points when the  
second record-breaker for the day,  
Mark Scott, bettered his own mark  
of a week ago in the mile run, win-  
ning in a time of 5:25.3. Scott has  
been running for less than two  
weeks and had never won the mile  
event before.

Chelsea was unusually strong in  
the field events with Gary Marriott  
beating his best mark of the year  
by a full five feet in the shot put  
with a toss of 39' 2 1/2" for a second-  
place finish. Mark Smyth added  
points with his third-place  
35' 10" effort.

John Collins gave the team its  
first points of the year in the pole  
vault with a leap of 7' 8", while  
Dan Hagen and Howard Salter  
finished second and fourth in the  
long jump with 15' 11 1/2" and 15' 1"  
efforts, respectively.

Randy Sweeney added punch with  
his 4' 10" first-place finish in the  
high jump with Mark Heard tak-  
ing third with 4' 8". Rick Gaunt  
claimed the fourth-place spot with  
the same height as Heard but with  
more jumps attempted.

Howard Salter continued his

winning ways in the hurdle events  
with a first-place finish of 13.6 in  
the 100-yd. lows and a second-place  
in the 60-yd. highs in 9.8. Anth-  
ony Houle finished fourth behind  
Salter in the lows with a time of  
14.6.

Chelsea placed consistently in  
the dash events with Dave Murphy  
a double winner in the 100-yd. and  
75-yd. events. His winning time in  
the former was 11.7 with Mark  
Smyth taking fourth in 12.4 while  
his time in the 75-yd. dash was 9.1  
with Brian Wissner trailing by a  
mere one-tenth of a second for  
second-place. Dan Hagen and Den-  
nis Bauer ran second and third in  
the 60-yd. dash with times of 7.9  
and 8.1, respectively.

Hagen later won the 220-yd. run  
with a 26.7 time followed by an-  
other first in the 440-yd. run by  
Roger Howard in 58.6 with Mark  
Heard taking the fourth spot in  
66.1.

The team of Houle, Smyth, Wis-  
sner, and Bauer swept to a 1:49.5  
victory in the 880-yd. relay, while  
Mike Check, Mark Burnett, John  
Collins, and Gary Marriott placed  
second in the 440-yd. relay in a  
time of 55.1.

If the squad can get by Tecum-  
seh Wednesday afternoon, they  
will finish the year at the Tecum-  
seh Relays Friday, May 12 with a  
perfect 7-0 season.

### SOMETHING OLD...

The patchwork look of yester-  
year has staged a comeback. Now  
it's seen in men's vests, overalls,  
and even in home decorating pil-  
lows and table skirts.

The Chelsea Standard, Thursday, May 4, 1972 11

## CHELSEA VILLAGE COUNCIL PROCEEDINGS

This meeting was called to order  
by President Fulks at 8 p.m. Pres-  
ent: President Fulks, Clerk Harvey  
Administrator Weber, Trustees:  
Borton, Gorton, Musbach, Dmoch,  
Boylan and Wood. Others present  
for the meeting were Police Chief  
Meranuck, Elwyn Beach, John  
Keusch, Mr. and Mrs. Walter Mohr-  
lock, Clark Bushnell, Henry Hauen-  
stein and Gregory Aubell.

A public hearing was held re-  
garding construction of curb and  
gutter on a portion of Book and  
Washington Streets with no ob-  
jections being voiced.

Motion by Wood, supported by  
Borton, to construct curb and gut-  
ter on the east and west side of  
Book St. from Wood St. south ap-  
proximately 265 feet and the south  
side of Washington St. from the  
existing curb and gutter at the  
High School drive east approxi-  
mately 170 feet. Said cost of con-  
struction to be equally shared be-  
tween the Village and the abutting  
property owners. Roll call: Yeas  
all. Motion carried.

Henry Hauenstein and Gregory  
Aubell representing the firm of  
Finkbeiner, Pettis and Strout, san-  
itary sewer engineers, discussed  
with the Council the detail plans  
on the phosphorus removal equip-  
ment at the Wastewater Treat-  
ment Plant and the detail plans on  
the Sanitary Sewer Trunkline Ex-  
pansion.

Motion by Musbach, supported  
by Boylan, to accept the plans on  
Phosphorus Removal at the Wasto-  
water Treatment Plant as submis-  
sioned and to authorize Finkbeiner,  
Pettis and Strout to submit the  
plans to the Michigan Department  
of Health for a construction per-  
mit. Roll call: Yeas all. Motion  
carried.

Motion by Dmoch, supported by  
Gorton, to accept the plans on the  
entire Section A and 350 linear feet  
of 8-inch sanitary sewer as shown  
on page 18 of Section B of the San-  
itary Improvements Plans (project  
No. CHES 004 B1) and to author-  
ize Finkbeiner, Pettis and Strout  
to submit the plans to the Michi-  
gan Department of Health for a  
construction permit. Roll call:

Yeas all. Motion carried.  
President Fulks submitted the  
following appointments for ap-  
proval: Fire Chief, James Gaken;  
Deputy Fire Chief, Mac Packard;  
Village Attorney, Keusch & Frint-  
off; Deputy Treasurer, Richard  
Harvey; Deputy Clerk, Frederick  
Weber.

Motion by Wood, supported by  
Borton, to approve the above ap-  
pointments as submitted. Roll call:  
Yeas all. Motion carried.

Motion by Gorton, supported  
by Boylan, to donate \$50 to the  
American Legion Post 31 to help  
defray Memorial Day expenses.

Roll call: Yeas all. Motion carried.  
Motion by Gorton, supported by  
Musbach, to authorize payment to  
the firm of Finkbeiner, Pettis and  
Strout, sanitary sewer engineers  
in the amount of \$1,000 from the  
Electric Fund for engineering serv-  
ices for the Sewerage Improvement  
Program. Same sum to be repaid  
upon the sale of the sewer bonds.  
Roll call: Yeas all. Motion carried.

President Fulks proclaimed the  
week of May 20 through May 27,  
1972 as Michigan Week, and called  
on local citizens to demonstrate  
their pride in their home state.

Motion by Dmoch, supported by  
Wood, to authorize the payment of  
bills as submitted. General Fund:  
\$9,885.27. Roll call: Yeas all, Mo-  
tion carried.

Motion by Boylan, supported by  
Borton, to adjourn. Roll call: Yeas  
all. Motion carried. Meeting ad-  
journed.

Richard E. Harvey, Clerk.

Bargain-wise shoppers look to  
ground beef to balance a food bud-  
get. No need to worry about lack  
of variety, as any cookbook will  
suggest dozens and dozens of ways  
to bring this nutritious and flavor-  
ful meat to the table including  
burgers, loaves, beef balls, cas-  
srole concoctions and spaghetti  
sauces. Many new packaged con-  
venience products, frozen and  
dehydrated, can be given main-  
dish status with the addition of a  
pound or two of browned ground  
beef.

## PRESIDENTIAL PRIMARY ELECTION

To the Qualified Electors:

NOTICE IS HEREBY GIVEN, That a Presidential Primary Election will be held in the

### TOWNSHIP OF LIMA

(Precinct No. 1)

State of Michigan

at

### LIMA COMMUNITY HALL

Jackson Road at Lima Center  
within said Township on

## TUESDAY, MAY 16, 1972

FOR THE PURPOSE OF VOTING FOR CANDIDATES  
FOR THE OFFICE OF:  
**PRESIDENT OF THE UNITED STATES**

AND FOR THE PURPOSE OF ELECTING  
THE FOLLOWING:

**DELEGATES TO THE COUNTY CONVENTIONS  
OF THE DEMOCRATIC, REPUBLICAN,  
AMERICAN INDEPENDENT PARTIES.**

AND ALSO TO VOTE ON THE FOLLOWING  
CONSTITUTIONAL AMENDMENTS:

**A. Proposed Constitutional Amendment to allow  
the Legislature to authorize lotteries and to  
permit the sale of lottery tickets.**

This amendment would allow the legislature to enact  
laws to authorize lotteries and to permit the sale of  
lottery tickets.

**B. Proposed Constitutional Amendment to per-  
mit members of the legislature to resign and  
accept another office to which they have  
been elected or appointed.**

This amendment would permit members of the leg-  
islature to be elected or appointed to another civil  
office during the term for which they were elected.  
Before accepting that office they would be required  
to resign from their legislative office.

ALSO ANY ADDITIONAL AMENDMENTS OR  
PROPOSITIONS THAT MAY BE SUBMITTED

Notice Relative to Opening and Closing of the Polls

ELECTION LAW, ACT 116, P.A. 1954  
SECTION 720. On the day of any election, the polls shall  
be opened at 7 o'clock in the forenoon, and shall be  
continuously open until 8 o'clock in the afternoon and no  
longer. Every qualified elector present and in line at the  
polls at the hour prescribed for the closing thereof shall  
be allowed to vote.

THE POLLS of said election will be open at 7 o'clock a.m.  
and will remain open until 8 o'clock p.m. of said day  
of election.

**LEILA BAUER, Township Clerk**

## Spend 15 minutes with us. Find out what's different about your Ford Dealer.

### More New Cars



Pinto Wagon with  
Squire Option



Special Galaxie  
500



Maverick Luxury  
Decor



Gran Torino Sport

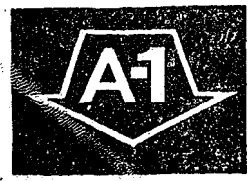


Mustang Sprint



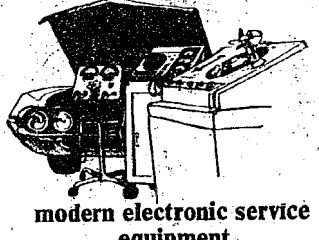
Explorer  
Special

### Better Used Cars



Each Ford Dealer A-1 used car  
is reconditioned, when necessary,  
from bumper to bumper.  
Choose from the widest variety.

### Outstanding Service and Personnel



modern electronic service  
equipment



Ford service school graduates



widest stock of replacement  
parts

## The difference with the Ford Team is we care about you and your car.

## PALMER MOTOR SALES, INC.

CHELSEA, MICHIGAN



# from HISTORY'S SCRAPBOOK

## DATES AND EVENTS FROM YESTERYEARS

Rome was founded on April 21, 753 B.C., by Romulus.  
On April 22, 1864, the New York World's Fair opened.  
James Buchanan, the 15th President of the United States, was born, April 23, 1791.  
Spain declared war on the United States, April 24, 1898.  
The United States Congress declared war on Spain, April 25, 1898.  
William Shakespeare was baptized, April 26, 1564.  
April 27, 1822 was the date of Ulysses S. Grant's birth.  
He was President of the United States from 1869-1877.

# SPECIAL SCHOOL ELECTION

NOTICE OF SPECIAL ELECTION  
OF THE QUALIFIED ELECTORS OF

**Chelsea School District**  
WASHTENAW AND JACKSON COUNTIES, MICHIGAN  
TO BE HELD

**MONDAY, MAY 8, 1972**

TO THE QUALIFIED ELECTORS  
OF SAID SCHOOL DISTRICT:

Please Take Notice that a special election of the qualified electors of Chelsea School District, Washtenaw and Jackson Counties, Michigan, will be held in the Large Group Instruction Room of the Dwight E. Beach School, on

**Monday, May 8, 1972**

THE POLLS OF ELECTION WILL OPEN AT 7:00 O'CLOCK, A.M., AND CLOSE AT 8:00 O'CLOCK, P.M.

The following propositions will be submitted to the vote of the electors qualified to vote thereon at said special election.

- I. Shall the limitation on the total amount of taxes which may be assessed against all property in Chelsea School District, Washtenaw and Jackson Counties, Michigan, be increased by 10.98 mills on each dollar (\$10.98 on each \$1,000) of the assessed valuation, as equalized, of all property in said school district for a period of two (2) years, 1972 and 1973, for the purpose of providing additional funds for operating expenses (this being a renewal of 10.98 mills for operating purposes which expired with the 1971 tax levy)?
- II. Shall the limitation on the total amount of taxes which may be assessed against all property in Chelsea School District, Washtenaw and Jackson Counties, Michigan, be increased by one mill on each dollar (\$1.00 on each \$1,000) of the assessed valuation, as equalized, of all property in said school district for a period of two (2) years, 1972 and 1973, for the purpose of providing additional operating funds to be used to purchase necessary equipment and supplies and repair school buildings and develop school sites?
- III. Shall the limitation on the total amount of taxes which may be assessed against all property in Chelsea School District, Washtenaw and Jackson Counties, Michigan, be increased by one mill on each dollar (\$1.00 on each \$1,000) of the assessed valuation, as equalized, of all property in said school district for a period of three (3) years, 1972, 1973 and 1974, for the purpose of levying a building and site sinking fund tax to be used for the purpose of purchasing real estate for sites for, and the construction or repair of school buildings?
- IV. Shall Chelsea School District, Washtenaw and Jackson Counties, Michigan, levy one mill for a period of three (3) years, 1972, 1973 and 1974, to create a building and site sinking fund to be used for the purpose of purchasing real estate for sites for, and the construction or repair of school buildings?

All school electors who are registered with the city or township clerk or the city or township in which they reside are eligible to vote at this election.

I, Sylvester Leonard, Treasurer of Washtenaw County, Michigan, hereby certify that, as of March 14, 1972, the records of this Office indicate that the total of all voted increases over and above the tax limitation established by the Constitution of Michigan, in any local units of government affecting the taxable property located in Chelsea School District, Washtenaw and Jackson Counties, Michigan, is as follows:

By Washtenaw County:	None
By Sylvan Township:	None
By Sharon Township:	None
By Freedom Township:	None
By the School District:	None
By Washtenaw Comm. College:	1 1/2 mills 1965 & future 1 mill 1971-1975 incl.

Sylvester A. Leonard  
Treasurer  
Washtenaw County, Michigan

I, Merlyn E. Johnson, Treasurer of Jackson County, Michigan, hereby certify that, as of March 15, 1972, the records of this Office indicate that the total of all voted increases over and above the tax limitation established by the Constitution of Michigan, in any local units of government affecting the taxable property located in Chelsea School District, Washtenaw and Jackson Counties, Michigan, is as follows:

By Jackson County:	None
By Jackson Comm. College:	1.33 mills 1972 unlimited
By Jackson Spec. Ed.	1.50 mills 1972 unlimited
By Grass Lake Township:	2 mills 1972
By Waterloo Township:	None
By the School District:	None

Marjorie Cox  
Deputy Treasurer  
Jackson County, Michigan

This Notice is given by order of the Board of Education of Chelsea School District, Washtenaw and Jackson Counties, Michigan.

**MRS. CAROLYN A. SMITH**  
Secretary, Board of Education

# + Services in Our Churches +

## ST. PAUL UNITED CHURCH OF CHRIST

The Rev. Warner Siebert, Pastor

Saturday, May 6—

9:00 a.m.—Junior High confirmation program.

Sunday, May 7—

9:15 a.m.—Church school.

10:30 a.m.—Worship service.

Sermon title: "Losers of the Day."

2:30 p.m.—Ann Arbor-Jackson Association spring meeting at St. John's UCC in Jackson. Community Choir concert.

Monday, May 8—

7:30 p.m.—PP IV at First Methodist church in Chelsea.

Tuesday, May 9—

12:00—Ann Arbor-Jackson Association ministers.

Wednesday, May 10—

7:00 p.m.—Spiritual Life Department.

7:15 p.m.—High School Choir.

8:15 p.m.—Chancel Choir rehearsal.

Thursday, May 11—

9:30 a.m.—Koinonia Study Group at Alma Meserv's.

3:00 p.m.—Ann Arbor-Jackson Association Executive Board.

Friday, May 12—

Ann Arbor-Jackson SYF Retreat begins.

## CHELSEA BAPTIST CHURCH

337 Wilkinson

The Rev. James Stacey, Pastor

Every Sunday—

9:45 a.m.—Sunday school.

11:00 a.m.—Worship service.

Nursery care available during all services.

6:00 p.m.—Junior and Senior Baptist Youth Fellowship.

7:00 p.m.—Evening service.

Every Wednesday—

7:00 p.m.—Bible study and prayer meeting.

## OUR SAVIOUR LUTHERAN CHURCH

The Rev. William H. Keller, Pastor

1515 S. Main, Chelsea

Each Sunday—

9:00 a.m.—Sunday school.

10:30 a.m.—Worship service.

Every Tuesday—

3:45 to 5:15 p.m.—Confirmation I.

Every Thursday—

4:00 to 5:30 p.m.—Confirmation II.

Every Saturday—

9:00 a.m.—11:00 a.m.—Confirmation III.

## VILLAGE UNITED METHODIST CHURCH OF WATERLOO

818 Washington St.

Mrs. Altha Barnes, Pastor

Every Sunday—

10:00 a.m.—Sunday school.

11:15 a.m.—Morning worship.

First and Third Saturdays—

7:00 p.m.—Youth Fellowship at Village Church Sunday school house.

Every Tuesday—

9:00 a.m. to 11:00 a.m.—Confirmation III.

## ZION LUTHERAN CHURCH

Corner of Fletcher, Waters Rds. (Rogers Corners)

The Rev. John R. Morris, Pastor

Thursday, May 4—

8:00 p.m.—Special congregational meeting.

Friday, May 5—

May Fellowship Day.

Saturday, May 6—

Youth instruction classes.

Sunday, May 7—

9:00 a.m.—Sunday school.

15:15 a.m.—Worship service with Holy Communion. Rural Life Sunday.

7:30 p.m.—Choir Festival at St. Paul United Church of Christ.

Monday, May 8—

7:30 p.m.—Ecumenical Parish Planning session at Methodist church.

Tuesday, May 9—

7:15 p.m.—Junior Choir.

8:00 p.m.—Senior Choir.

## ST. BARNABAS EPISCOPAL CHURCH

2655 Old US-12

The Rev. C. Walton Fitch, Vicar

Telephone 426-8815

Every Sunday—

9:15 a.m.—Holy Communion, first, third and fifth Sundays.

9:15 a.m.—Morning Prayer, second and fourth Sundays.

## FIRST ASSEMBLY OF GOD

The Rev. Thode B. Thodeson, Pastor

Every Sunday—

9:45 a.m.—Sunday school.

11:00 a.m.—Worship service.

7:00 p.m.—Evangelistic service.

Every Wednesday—

7:00 p.m.—Midweek services.

Every Tuesday—

3:30-5:00 p.m.—Confirmation I.

Every Thursday—

4:00 to 5:30 p.m.—Confirmation II.

Every Saturday—

9:00 a.m.—11:00 a.m.—Confirmation III.

## VILLAGE UNITED METHODIST CHURCH OF WATERLOO

818 Washington St.

Mrs. Altha Barnes, Pastor

Every Sunday—

10:00 a.m.—Sunday school.

11:15 a.m.—Morning worship.

First and Third Saturdays—

7:00 p.m.—Youth Fellowship at Village Church Sunday school house.

Every Tuesday—

9:00 a.m. to 11:00 a.m.—Confirmation III.

## FIRST UNITED METHODIST CHURCH

The Rev. Clive Dickins, Pastor

Friday, May 5—

12:00—Pot-luck luncheon, Zion Lutheran church.

Saturday, May 6—

Cleaning bee at the church.

Sunday, May 7—

9:00 a.m.—Church school (4 years to adult).

10:00 a.m.—Worship service.

Nursery and pre-school Sunday school.

Tuesday, May 9—

7:30 a.m.—Board of Trustees in the Litteral room.

Wednesday, May 10—

1:00 p.m.—WSCS Executive Board at the home of Donna Palmer.

3:30 p.m.—Primary Choir.

4:00 p.m.—Junior Choir.

8:00 p.m.—Youth and Adult Choir.

Thursday, May 11—

8:00 p.m.—Council of Ministries in the Educational Unit.

## CONGREGATIONAL CHURCH

(United Church of Christ)

The Rev. Paul Gerhart, Pastor

Every Saturday—

6:30-9:00 a.m.—Men's Breakfast.

Every Sunday—

9:00 a.m.—Senior High Sunday school.

9:45 a.m.—Sunday school.

10:00 a.m.—Morning worship.

## ST. MARY CATHOLIC CHURCH

The Rev. Fr. Francis Wahowiak, Pastor

Every Saturday—

7:30 p.m.—Mass.

Every Sunday—

6:30, 8:00, 10:00, 11:30 a.m.—Mass.

## SALEM GROVE UNITED METHODIST CHURCH

The Rev. Harry Weeks, Pastor

Every Saturday—

2:30 p.m.—Choir rehearsal.

Every Sunday—

10:00 a.m.—Sunday school.

11:00 a.m.—Worship service.

## FIRST CHURCH OF CHRIST, SCIENTIST

1883 Washtenaw Ave., Ann Arbor

Sunday, May 7—

10:30 a.m.—Sunday school; morning service. Lesson-sermon: "Adam and Fallen Man."

## BETHEL EVANGELICAL AND REFORMED CHURCH

(United Church of Christ)

Freedom Township

The Rev. Roman A. Reineck

Every Sunday—

10:00 a.m.—Worship.

10:00 a.m.—Sunday school.

## NORTH LAKE UNITED METHODIST CHURCH

The Rev. Harry Weeks, Pastor

Every Sunday—

9:30 a.m.—Worship service.

10:30 a.m.—Sunday school.

Every Tuesday—

7:00 p.m.—Choir rehearsal.

## ST. JACOB EVANGELICAL LUTHERAN CHURCH

12501 Riethmiller Rd., Grass Lake

The Rev. Andrew Bloom, Pastor

Every Sunday—

9:00 a.m.—Worship service.

10:15 a.m.—Divine services.

## METHODIST HOME CHAPEL

The Rev. R. L. Clemans, Chaplain

Every Sunday—

8:45 a.m.—Worship service.

## CHELSEA MEDICAL CENTER

Every Wednesday—

1:30 p.m.—Worship service.

## CHURCH OF CHRIST

13661 Old US-12, East

Lionel S. Burger, Minister

Every Sunday—

10:00 a.m.—Church school.

11:00 a.m.—Worship service.

Babysitter will be at the church.

6:00 p.m.—Worship service.

Every Wednesday—

7:30 p.m.—Bible Study.

## NORTH SHARON COMMUNITY BIBLE CHURCH

Sylvan and Washburn Rds.

The Rev. William Enslin, Pastor

Every Sunday—

10:00 a.m.—Sunday school.

11:00 a.m.—Worship service.

6:30 p.m.—Young People's service.

Every Wednesday—

7:30 p.m.—Prayer meeting.

## IMMANUEL BIBLE CHURCH

145 E. Summit St.

The Rev. LeRoy Johnson, Pastor

Every Sunday—

9:45 a.m.—Sunday school, nursery provided.

11:00 a.m.—Morning worship, nursery provided.

7:00 p.m.—Evening service.

Every Wednesday—

7:30 p.m.—Family hour, prayer meeting and Bible study.

First Sunday of Month—

7:00 p.m.—Communion service.

## ST. THOMAS EVANGELICAL LUTHERAN

Ellsworth and Haab Rds.

The Rev. Daniel L. Mattson, Pastor

Thursday, May 4—

8:00 p.m.—Choir rehearsal.

Saturday, May 6—

9:00 a.m.—Confirmation class.

Sunday, May 7—

10:00 a.m.—Communion.

11:00 a.m.—Sunday





Mrs. Gregory Benedict Stripp

## Mona Elyse Dillon, Gregory Stripp Wed Saturday in Ypsilanti Church

n's Catholic church, Ypsilanti, provided the setting for the wedding of Mona Elyse Dillon and Gregory Stripp, Saturday, May 3.

The Rev. Fr. David Harvey officiated at the ceremony. The new Mrs. Stripp is the daughter of Mrs. John Dillon, of 14361 Edgewater Dr., Gregory, and the late Mr. Dillon. The bridegroom is the son of Mr. and Mrs. George E. Stripp of 241 Hewitt, Ypsilanti.

Mary's Mother-Daughter supper, held Monday evening at St. Mary's Hall. Mary was honored as the mother of the present. Honored were Mrs. David as the youngest mother; Mary Kniss, the grandmother; the most granddaughters; the Callison as the mother of the farthest; mother of the youngest baby was Mrs. Kopka. Honored as the girl for May was Mrs. L.

The matron of honor was Mrs. David G. Pickell of Chelsea, while Miss Sharon Stripp, sister of the bridegroom, attended as bridesmaid. Best man for the occasion was Timothy Hines of 249 Edison, Ypsilanti, while David Hatch and Gary Profit, both of Ypsilanti, acted as guests for the service. Vocalists for the ceremony were Sister Mary Carol of St. John's and Ann McKernan of Chelsea. A reception for 150 guests was held following the ceremony at the home of Mr. and Mrs. George Stripp where Miss Betsy Stripp was in charge of the guest book. The couple is taking a week-long trip to upper Canada before returning to reside at 721 Clark Rd., Ypsilanti.

The bride will be a June graduate of Chelsea High school. The bridegroom is a graduate of Ypsilanti High school and has served in the U.S. Marine Corp.

Kathleen Chapman acted as stress and welcomed the at the supper. Rev. Fr. Francis Wahowiak gave the evening's address and the program with a prayer.

STATISTIC? day in the United States and 1,500 homes are destroyed by fire.

WINANS JEWELRY STORE



Mrs. William Clark

WINANS JEWELRY STORE

WINANS JEWELRY STORE

WINANS JEWELRY STORE

WINANS JEWELRY STORE

WINANS JEWELRY STORE

WINANS JEWELRY STORE

WINANS JEWELRY STORE

WINANS JEWELRY STORE

## Mother-Daughter Banquet Held By Legion Auxiliary

American Legion Auxiliary Mother and Daughter Banquet was held Tuesday, May 2 at the Legion Home at Cavanaugh Lake with 30 members and guests present. A delicious pot-luck dinner was enjoyed by all.

Gifts were given to the following: oldest mother present, Mrs. Agnes Hummel; youngest mother present, Donna Buig; most granddaughters present, Ethel Buehler; youngest grandmother, Lauryne White.

A regular meeting followed with 14 members and 10 guests present. A discussion followed regarding the two hospital parties to be held in June. It was decided to buy the refreshments but workers are needed for both parties.

After some discussion it was decided to raise the dues to \$4 for adult members, leaving the junior members at the same amount. The increase was necessary due to the increases handed down from Department and National.

District President, Norma Short and Mae Uphaus, district secretary, were guests. President Short gave a talk on some of the goals which have been attained by the Second District this year, one being the attaining of membership goal.

Next meeting will be held June 6 at 6:30 p.m. at the Legion Home. Tuesday Luncheon served by the officers. Regular meeting to follow at 8 p.m.

## Senior Citizen Activities

Senior Citizens held their business meeting Tuesday, April 25 at the Korner House. Twelve members made plans for the social party to be held Thursday, May 4. Acting as the committee for the afternoon were Zita Hafner and Loreta Doll.

Plans were announced for a sauerkraut dinner Wednesday, May 10 at noon. The planning chairman is Zita Hafner and the cost will be 75 cents. Also a May birthday pot-luck dinner was planned for Thursday, May 18, at 6 p.m. The planning committee is Mrs. Katherine Dorner and Jim and Thelma Eismann.

A report was made that 10 lap robes and 10 walker aprons have been donated to the Chelsea Medical center and eight lap robes and six walker aprons to Cedar Knoll.



Mrs. A. William Coxon

## Ann Arbor Club Leader Installed as President of SE Michigan Federation

Mrs. A. William Coxon, 1417 S. University, Ann Arbor, was installed April 26 as president of the Southeastern District of the Michigan Federation of Women's clubs. Elected last fall to serve the two-year term, Mrs. Coxon was installed at the annual state convention April 24-25 in Lansing.

In her capacity as president, Mrs. Coxon will represent the most populous district in Michigan, comprised of more than 70 clubs in eight counties. The federation's southeastern district is composed of Ingham, Livingston, Lenawee, Monroe, Wayne, Oakland, Jackson and Washtenaw counties. There are 26 clubs in the Washtenaw county federation.

Her responsibilities will include acting as a liaison between local clubs and state and national committees. She will undertake numerous speaking engagements with local clubs on the six general topics of concern to the federation: home life, education, social welfare, international relations, American citizenship and the fine arts. During the course of a year she will meet at least four times with the presidents of Michigan's six other districts and this year will travel

to Denver in June to attend the national convention.

Mrs. Coxon was elected directly by the clubs which she will represent. Each club, no matter how small, is allowed one delegate for each 50 members or less. These delegates in turn elect the president for their particular district.

Purpose of the federation, aside from cultural pursuits, is to do whatever they can to help implement various programs in areas which they consider in need of reform, rejuvenation, or deserving of special attention and consideration.

More than 500 women attended the recent state convention where Mrs. Coxon chaired the platform which passed several resolutions which the federation will now proceed to help carry out. They called for a revision of welfare programs and resolved to help reverse the sky-rocketing costs of public welfare. They hope to help "encourage self-reliance, initiative, and responsibility in a spirit of national well-being and encourage more stringent screening of welfare recipients." They also resolved to help reform the abuses of student

## Home Economics Study Groups Calendar

May 11—Ellsworth Road Study Group, at Leptheuser's.  
May 16—Fosdick Study Group, at Mrs. Marion Youngs, 10302 Moon Rd., Saline.  
May 16—Free-Lo's Study Group, at the home of Mrs. L. Meabon, 2166 Peters Rd.

voting, considering it in the best interest of the individual communities that students vote in their own home town by absentee ballot much the way a serviceman votes in public elections. They also called for more regulation of honest food labelling and packaging and recommended the recycling of glass, paper, and metal so that dumping areas may be reserved only for organic waste materials. Though not taking an official position, they recommended that all clubs study the possibility for a unicameral legislature and noted that petitions to be signed were available.

Mrs. Coxon is a 1919 graduate of the University of Michigan and holds a bachelor's degree in English and a master's in creative writing. She taught school for 10 years and has been an active member of many clubs. She organized the first Optimists Club in Detroit and is a member of Women's Symphony Society and the League of Women Voters.

She is also quite an accomplished author and has won the state competition for the best one-act play on three different occasions. One play, "The Creampuff Queen" was produced by the Ann Arbor Civic Theatre.

Mrs. Coxon will be representing three clubs in the immediate Chelsea-Dexter area: the Dexter Child Study Club, the Dexter Woman's Club, and the Chelsea Woman's Club. She hopes to add several study groups from the area to the federation during her administration.

## Debra Stinehelfer, D. G. Passow Speak Vows at Methodist Church

Chelsea Methodist church provided the setting Saturday, April 22 for the marriage of Debra Jo Stinehelfer and Donald G. Passow. The Rev. Clive Dickins officiated at the 7:30 p.m. service. The new Mrs. Passow is the daughter of Mr. and Mrs. Ralph Stinehelfer of 738 S. Main. The bridegroom is the son of Mr. and Mrs. Donald Passow of 908 Cavanaugh Lake Rd.

The bride wore a floor-length white gown accented in pink and blue. She wore a pink wide-brimmed hat with matching pink shoes and carried a cascading bouquet of pink and white sweetheart roses. Mrs. Michael Badreau, 738 S. Main, a sister of the bride, acted as matron of honor. She wore a yellow dotted-swiss floor-length gown trimmed in orange and green. She carried a bouquet of daisies, carnations and roses.

Shannon Passow, 908 Cavanaugh Lake Rd., a sister of the bridegroom, attended as bridesmaid and was dressed in a full-length orange dotted-swiss gown.

Felicia Passow, another sister of the bridegroom, was dressed in a green floor-length dotted-swiss dress and served as flower girl for the ceremony.

Randy Straub of Grass Lake acted as best man.

A reception was held at the home of Mr. and Mrs. Stinehelfer immediately following the service.

ice. Linda Fensch of Ann Arbor poured punch for the evening while Debra Maynard of Marquette was in charge of the guest book and Carolyn Lyons of Chelsea cut the cake.

The couple traveled to Canada for a week before returning to reside at 131 E. Middle.

The newlyweds are both 1969 graduates of Chelsea High school. Mrs. Passow is employed by Polly's supermarket. Mr. Passow attended Hope College and will be inducted into the Navy May 8.

Leftovers don't have to be a problem. They can be a creative challenge. With a roast, for example, you can slice it for a hot or cold sandwich, use it for hash, cube it in a casserole with rice, grated cheese and seasoned sauce, or serve it in many other ways.



DOWN THE RABBIT HOLE

Hand-Made Gifts

"MOTHERS' DAY" SPECIAL:

Straw-flower Cubes

Were \$9.00

Now \$6.00

105 S. Main St., Chelsea  
Tues. thru Sat.  
9:30 - 5:30

## VILLAGE BEAUTY SALON

LORETTA - CINDY - EULA  
ARLENE - SARAH - JANICE

107 N. MAIN PHONE 475-5421

Evenings By Appointment

OPEN TUESDAY THRU SATURDAY

Closed Mondays for the Summer Months.



# STOCK REDUCING CARPET SALE

INSTALLATION WITHIN 48 HOURS OR DO-IT-YOURSELF

RUBBER BACK TWEED, 3 colors .....	Reg. \$5.95	\$4.99
MOHAWK Antron Nylon commercial, gold tweed. ....	Reg. \$9.95	\$5.88
CABIN CRAFT - HORIZONS, rubber back, 2 colors ..	Reg. \$6.95	\$5.88
WUNDA WEVE SHAG, 2 colors .....	Reg. \$7.95	\$5.88
LAURELCREST SHAG, 3 colors .....	Reg. \$8.95	\$6.95
LEES SPLUSH, 5 colors .....	Reg. \$9.95	\$7.77
PATTERN KITCHEN CARPET .....	Reg. \$9.95	\$7.95

Call 475-8621 for In-Home Service  
Use Your BankAmericard

Merkel  
FURNITURE and CARPET

## SCHOOL LUNCH MENU

Week of May 8-12

Monday, May 8—Goulash with cheese, mixed vegetables, corn muffin, butter, Jell-O sauce, milk.

Tuesday, May 9—Varsity burgers, buns, poka-dot salad, cook's potatoes, fruit, molasses, cookies, milk.

Wednesday, May 10—Pizza pie with meat and cheese, buttered green beans, bread, butter, lemon fluff pudding, milk.

Thursday, May 11—Escalloped potatoes with ham cubes, pickled beets, rolls, butter, rice dessert, milk.

Friday, May 12—Toasted cheese sandwich, lettuce wedge with dressing, potatoes, fudgesicle, cookie, milk.

Telephone Your Club News To GR 5-2581.

WINANS JEWELRY STORE

WINANS JEWELRY STORE

WINANS JEWELRY STORE

WINANS JEWELRY STORE

WINANS JEWELRY STORE

WINANS JEWELRY STORE

WINANS JEWELRY STORE

WINANS JEWELRY STORE

WINANS JEWELRY STORE

WINANS JEWELRY STORE

WINANS JEWELRY STORE

WINANS JEWELRY STORE

WINANS JEWELRY STORE

WINANS JEWELRY STORE

WINANS JEWELRY STORE

WINANS JEWELRY STORE

WINANS JEWELRY STORE

WINANS JEWELRY STORE

WINANS JEWELRY STORE

WINANS JEWELRY STORE

WINANS JEWELRY STORE

WINANS JEWELRY STORE

WINANS JEWELRY STORE

WINANS JEWELRY STORE

WINANS JEWELRY STORE

WINANS JEWELRY STORE

WINANS JEWELRY STORE

WINANS JEWELRY STORE

WINANS JEWELRY STORE





## THURSDAY THROUGH TUESDAY SUPER BONUS BUYS

CHELSEA EXTRA SPECIALS in Addition to Those in Our Big 12-Page

Circular Delivered to Your Homes By Mail.

★ FRESH BAKED GOODS DELIVERED DAILY

Save \$1.16

# COCA COLA

Save \$1.16

# COCA COLA

CASE OF 24-16 oz. BOTTLES

# \$1.99

Plus Deposit

BANQUET FROZEN

## POT PIES

SAVE 26c

# 7 for \$1

YOUR CHOICE CHICKEN, BEEF, TURKEY OR TUNA

MOUNTAIN TOP FROZEN

## APPLE PIES

SAVE 28c 26 Oz.

# 75c

U. S. NO. 1

## YELLOW ONIONS

3-lb. Bag

# 39c

YOUR CHOICE LEON'S QUALITY CONVENIENCE DELI-FOODS  
SAVE 10c TO 20c LB.

POTATO SALAD  
BAKED BEANS  
MACARONI SALAD  
COLE SLAW

# 39c

Lb.

There's Big News Coming to Our  
Chelsea Market Soon. Watch for  
Our Mailer and Our Ad in  
The Chelsea Standard.

## DEATHS

### Mrs. M. Knickerbocker

Long-Time Area Resident  
Dies at Methodist Home

Mrs. Maynard (Ethel) Knickerbocker, 73, of 429 W. Middle St., died Sunday, April 30 in the Chelsea Methodist Home. She was born Jan. 25, 1899 in Tustin, the daughter of George and Della Culver Laughlin. She married Maynard Knickerbocker on Oct. 9, 1920 in Ypsilanti. Mr. Knickerbocker died July 20, 1947.

Mrs. Knickerbocker is survived by seven sons, Harvey M., La Mesa, Calif.; George A. and Ray E. of Chelsea; Clare A., Manchester; David H., Elk Grove, Calif.; Major land; and Alfred B., Bangkok, Thailand; and Alfred B., Portola Valley, Calif.; one daughter, Mrs. M. R. (Dorothy) Collins, Jackson; one sister, Mrs. J. J. (Grace) Jasper, Birmingham; 24 grandchildren and one great-grandchild.

She was preceded in death by three grandchildren.

Mrs. Knickerbocker was a member of the Sarah Caswell Angell Chapter of the DAR, a life member and past worthy matron of the Order of the Eastern Star, Olive Chapter 108, a member of the Chelsea Senior Citizens, a congregational member of St. Paul United Church of Christ, and a charter member of the Chelsea Child Study Club. She was a retired employee of the University of Michigan and had been employed prior to her death at the Methodist Home.

Funeral services were held Wednesday, May 3 at 2 p.m. at the Staffan Funeral Home with the Rev. Warner H. Siebert officiating. A memorial was conducted Tuesday at 8 p.m. by members of the Order of the Eastern Star. Burial followed the services in the Oak Grove cemetery.

Memorial contributions may be made to the St. Paul Memorial Fund.

### Mrs. Edward Reinhardt

Lyndon Township Resident  
Dies at Community Hospital

Mrs. Clara Reinhardt, 82, of 10001 Joslin Lake Rd., Lyndon township, died at Chelsea Community Hospital April 30. Born July 9, 1889 in Detroit, she was a daughter of John and Augusta Blum Mester. She was married to Edward W. Reinhardt on May 3, 1911. He preceded her in death on April 30, 1966.

Surviving is a son, Alvin Reinhardt of Lyndon township, a daughter, Mrs. Francis (Charlotte) Hannah of Lansing, four grandchildren, Mrs. David (Barbara) Secars of Lansing, John Hannah of Lansing, Kenneth Reinhardt of Ann Arbor and Malcolm Reinhardt of Lyndon township. Three great-grandchildren, several nieces and nephews also survive.

Funeral services will be held at 2 p.m. Thursday (today), May 4 at the Burghardt Funeral Home with the Rev. Warner H. Siebert officiating. Burial will follow in Oak Grove cemetery.

4 OUT OF 5

More than four out of each five dollars worth of farm products are now produced on farms which have annual sales over \$10,000.

### Miss Amanda Koch

Dies Tuesday at Medical  
Center After 10-Year Illness

Miss Amanda W. Koch, 78, of 38 Cavanaugh Lake, died Tuesday, May 2 at the Chelsea Medical Center after an illness of 10 years. Before her illness she had been employed for many years at Vogel's Department Store.

Born April 10, 1894 in Lima township, she was a daughter of John and Mary Gruner Koch. She was a life-long member of St. Paul United Church of Christ and had taught Sunday school and sun in the church choir for many years.

Surviving are two sisters, Mrs. Emanuel (Sarah) Bahnmiller and Mrs. Julius (Mary) Niehaus, both of Chelsea, two nieces, Mrs. Robert L. (Kathryn) Michael and Mrs. Charles (Jean) Knorpp, both of Ann Arbor, as well as two nephews, Paul Barbour of Clinton and Robert Niehaus of Indianapolis, Ind. A sister, Mrs. Wm. (Clara) Kuebler, preceded her in death on Dec. 7, 1970.

Funeral services will be held at 1 p.m. on Friday, May 5 at the Burghardt Funeral Home with the Rev. Warner H. Siebert officiating. Burial will follow in Oak Grove cemetery.

The family suggests that those who wish to do so may make contributions in Miss Koch's memory to St. Paul Church Memorial Fund. Envelopes are available for the purpose at the funeral home, where friends may call.

### Mrs. Fred Barth

Life-Long Chelsea Resident  
Dies at Convalescent Home

Mrs. Fred (Anna) Barth, 83, of 11840 Jerusalem Rd., died Monday, May 1 at the DeSmunter Convalescent Home, Sugar Loaf Lake. Born in Chelsea on April 2, 1889, she was the daughter of James and Mary Bietenbach Mullen. She was married to Fred Barth on Oct. 17, 1911. He preceded her in death on July 26, 1966.

Mr. and Mrs. Barth farmed at the Jerusalem Rd. address all their married life. She was a member of St. Mary Catholic church and a member of the church's Altar Society.

She is survived by two sons, Harold and Robert, both of Chelsea; three daughters, Mrs. Hugo (Ruth) Luenser, Mrs. Charles (Virginia) Williams, and Mrs. Leo (Dorothy) Hellner, all of Chelsea; 11 grandchildren; and one brother, John Mullen, Tucson, Ariz.

She was preceded in death by one son, Carl, who died Feb. 25, 1942.

Funeral services will be held Thursday, May 4 at 10 a.m. at St. Mary Catholic church, the Rev. Fr. Francis W. Howiak officiating, with burial following in Mt. Olivet cemetery. The rosary was recited Wednesday, 8 p.m. at the Staffan Funeral Home.

### Mrs. Frank P. Yost

Dies at Convalescent Center  
After Prolonged Illness

Mrs. Frank P. (Mary E.) Yost, 84, of 551 Howard Rd., died Friday, April 28 at the Whitmore Lake Convalescent Center after an



IT WAS A TENSE MOMENT Thursday, April 27 as Pack 455 held their annual Pinewood Derby. There were a total of 25 Cub Scouts and Webelos competitors, each hoping to win the coveted first-place trophy. Each scout knew that out of the 25 only three would experience the satisfaction of being proclaimed the best. When the dust cleared, Leon Wheeler was announced the winner with Steve

Kvarnberg and Todd Otto taking second and third. Each year a trophy is awarded to the scout whose model car is deemed the best looking in the field and this year's winner was Todd Cook. Winners are, (left to right): Leon Wheeler, first-place, Steve Kvarnberg, second-place, Todd Otto, third-place, Todd Cook, "Best of Show" winner, and Cubmaster Jerry Waldyke.

### Patrolman Peebles Cited By Bonding Company for Arrest

Patrolman David R. Peebles of the Chelsea Police Department received a certificate of appreciation from the Moon Bail Bonding Co. of Ann Arbor for apprehending a man charged with possession of marijuana and possession of stolen property.

Michael Anthony Lucas, 23, whose last official address was the Sylvan Hotel, was free on \$6,000 bond provided by the Ann Arbor company. However, bondsman Harold L. Moon decided to call in the bond and notified authorities to take Lucas into custody. He was seen Saturday, April 28 by Officer Peebles, who was patrolling in a squad car along with patrolman Bruce G. Siebert, and apprehended at 7:55 p.m. in the area of W. Middle and N. Main. He was transported to the Washtenaw County Jail where he is awaiting trial on the two charges.

A bondsman acts as an accused person's public jailer while he is

at large, in society pending trial. He is responsible for the whereabouts of the accused, as well as the assurance that he will appear in court on his trial date. If for any reason the bondsman believes that his client intends not to appear in court, or if he has failed to notify the bonding company of his whereabouts while he is out on bond, the company has the right to call in the bond, which authorizes them or any police agency to apprehend the subject and return him to jail.

A spokesman for the Moon company said that Lucas had failed to stay in contact with the office and neither of the co-signers knew his whereabouts so they had no choice but to call in the bond.

None of the alleged offenses took place in Chelsea, however, Lucas has several outstanding traffic violations in the village.

Telephone Your Club News To GR 5-3581.

### Anti-Abortion Group Formed

The Right to Life Committee, a group opposed to legalized abortion, had their first meeting in Chelsea at the home of Mrs. Richard Stoll. Guest speaker was Mrs. Raymond Denoyer, from Dexter, founder and former chairman of the Ann Arbor Right to Life group. Plans for pro-life activities were initiated.

Speakers are available for any area club meetings and volunteers for the Right to Life activities are needed. For more information contact Mrs. Lyn Degener, 475-2737, Chelsea, or Mrs. Raymond Denoyer, 428-8914, Dexter.



### PROBLEMS??

That's why we're here!

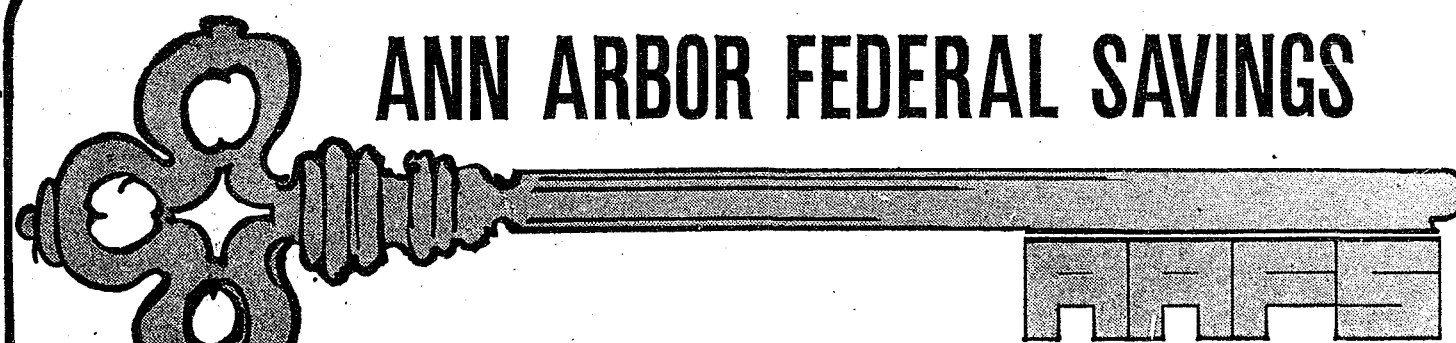
Trust us. We're the guys who know the inside story... and our shop is equipped for any car emergency. Service is our specialty. So bring your problems to us.

TIRES - BATTERIES - ELECTRONIC TUNE-UPS  
BRAKE SERVICE - WHEEL ALIGNMENT - WRECKER SERVICE

### Fred's Standard Service

889 S. Main, Chelsea

Phone 475-2804



## ANN ARBOR FEDERAL SAVINGS

# GOLD KEY MORTGAGES

The mortgage with a down payment so low you can buy your new home now.

Gold Key Mortgages are the key to home ownership for confident young families moving up, but who have not had time to accumulate a large down payment. Now a moderately priced family home can be purchased with a low down payment and liberal repayment period. Monthly payments can be scheduled at about house rent levels.

Now you can have your own home, your own yard, room for the kids to grow up, and build some equity for the future.

Ask your Realtor about a GOLD KEY Mortgage or get complete details from any Ann Arbor Federal Savings office.

ANN ARBOR FEDERAL SAVINGS

The Savings and Loan Specialists

Ann Arbor Office: 1200 E. Liberty at Midland, West Station at Ford, Main Highway at Platt, Plymouth at Wilson. Chelsea Office: Main Street near Old US-24

Member: Federal Home Loan Bank System • Federal Savings and Loan Insurance Corporation